

特色:

典型的KF或NW组件由两个相同的法兰、一个中心支架和一个真空卡箍组成，卡箍上有一个翼形螺母紧固件，可以经常连接和断开，无需工具。

真空密封是通过卡箍对法兰的15°表面均匀施压而实现的。配套的法兰密封槽由中心支架和O型圈组成以产生密封。

规格:

法兰: 304 S.S. (其他材料可根据要求提供)
 管件: 304不锈钢 (其他材料可按要求提供)
 卡箍: 铝, 不锈钢
 O型圈: 氟橡胶, NBR
 温度范围: 150°C (Viton) 80°C (NBR)
 真空度: 1*10⁻⁸mbar
 可根据要求提供更大或特殊的尺寸

Features:

The typical KF or NW assembly consists of two identical flanges, a center-ring, and an aluminum clamp with a wingnut fastener frequently connect and disconnect without tools.

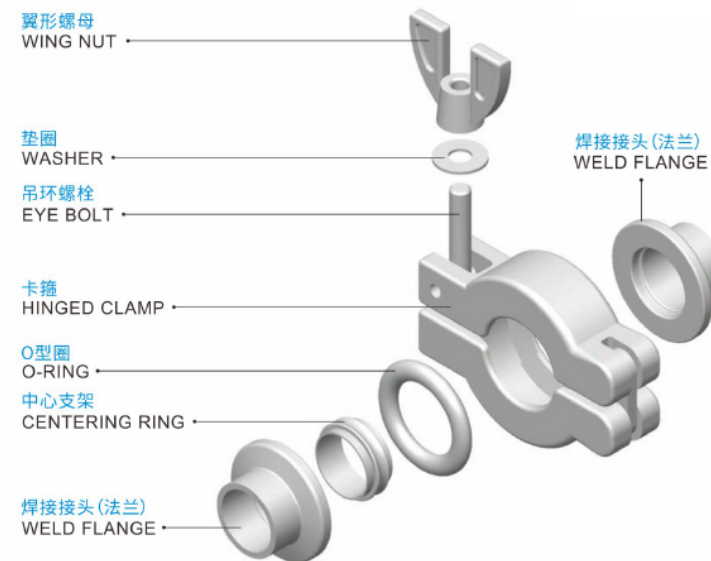
The vacuum seal is effected by uniform application of pressure by the clamp on 15° surface of the flange. The mating flange surfaces compress an O' ring (held in place by metal centering ring) to generate a seal.

Specifications:

Flanges: 304 S.S. (Other material available upon request)
 Fittings: 304 S.S. (Other material available upon request)
 Clamp: Aluminum, Stainless Steel
 O' ring material: Viton, NBR
 Temperature Range: 150°C (Viton) 80°C (NBR)
 Vacuum Rate: 1*10⁻⁸mbar
 Larger or special size available upon request

卡箍组件

Complete Clamp Assemblies



真空卡箍组件，如上所述，是进行真空密封连接最常用的方法。360°可旋转的法兰和中心支架的特点简化了装配。

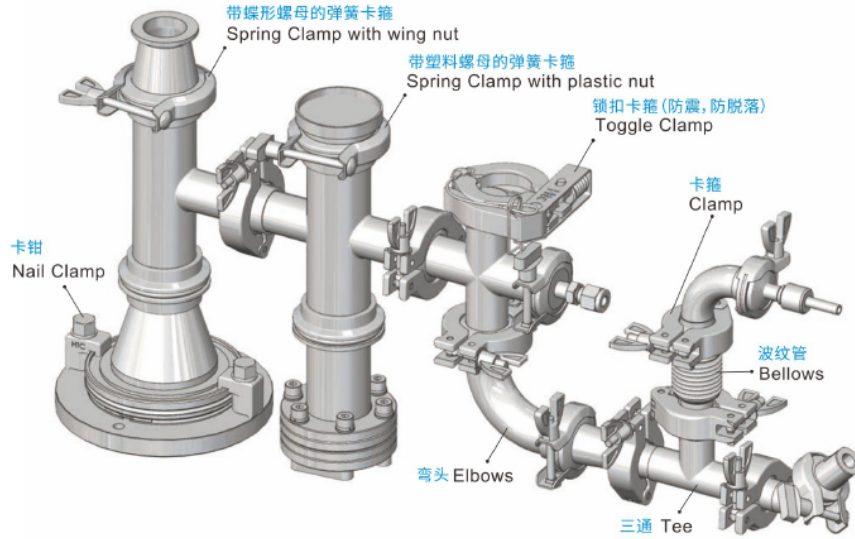
Hinged Clamp assemblies, detailed above, are the most commonly used method for making KF flange vacuum seal connections. Assembly is simplified by the 360° rotatable flanges and self-centering feature of the centering ring.

在两个法兰的15°外表面均匀地施加压力，用手指拧紧单一的翼形螺母，直到在中心支架的间隔层和中心支架的内表面之间产生第一次金属对金属的接触。中心支架的间隔层和配合法兰的内表面之间产生第一次金属间的接触。这将使O型圈在法兰盘之间受到压缩，并使其形成真空。这将压缩法兰之间的O型圈并形成真空密封。

Pressure is applied uniformly around the 15° outer surface of both flanges by finger-tightening the single wingnut until the first metal-to-metal contact is made between the spacing lips of the centering ring and the inner surface of the mating flanges. This compresses the O' ring between the flanges and makes the vacuum seal.

➤ KF组件的应用

Application for KF Components



这个系统的应用有多大, 想象力就有多大。

应用领域:

- 大型真空系统的粗加工和前线管线。
- 小型系统。
- 需要频繁更换的系统。
- 需要经常清洗的系统。
- 研究实验室的实验系统。
- 教学实验室。

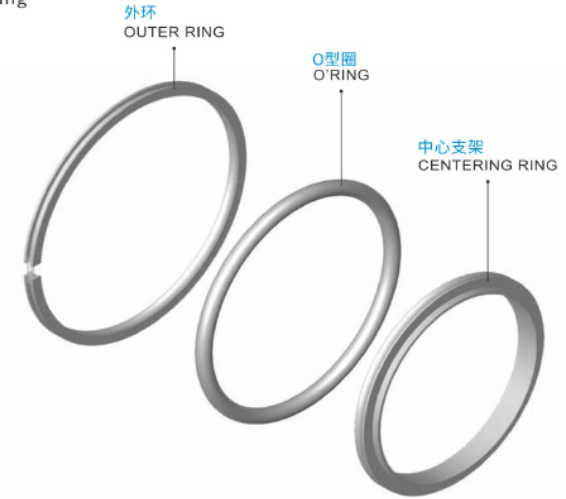
Applications for this system are as varied as the imagination can make them.

Some examples are:

- Roughing and foreline plumbing for large vacuum system.
- Small system.
- System demanding frequent change.
- System demanding frequent cleaning.
- Experimental system in research laboratories.
- Teaching laboratories.

➤ 中心定位环

Centering Ring



特点:

- 氟橡胶O型圈可间歇性烘烤到200°C, 持续使用到150°C。
- KF系列的真空密封是通过在15°的外法兰表面周围施加均匀的压力来压缩O型圈。
- ISO系列的真空密封是通过将O型圈压缩到配合的法兰之间来实现的。
- 这是通过交替用扳手拧紧相对的一对卡箍或卡钳来实现的, 直到法兰的内表面和中心支架的间隔层之间第一次出现金属对金属的接触。

规格:

- 中心支架: 304 S.S. (可根据要求提供其他材料)
- O型圈: 氟橡胶 (可根据要求提供其他材料)
- 外环: 铝合金
- 网眼: 304 S.S.
- 温度范围: 150°C (Viton) 80°C (NBR)
- 可根据要求提供更大或特殊的尺寸

应用:

- O型圈被认为是一种通用的密封装置。
- 可作为静态、动态、径向或面密封使用。
- 真空密封。

Features:

- Viton O'ring bakeable to 200°C intermittently, sustained use to 150°C.
- Vacuum seal of KF-series: O'ring compression by uniform pressure application around the 15° outer flange surface.
- The vacuum seal of ISO-series is made by compressing the O'ring between the mating flanges.
- This done by alternately wrench-tightening opposing pairs of clamps or bolts until the first metal-to-metal contact is made between the inner surfaces of the flanges and the spacing lips of the centering ring.

Specifications:

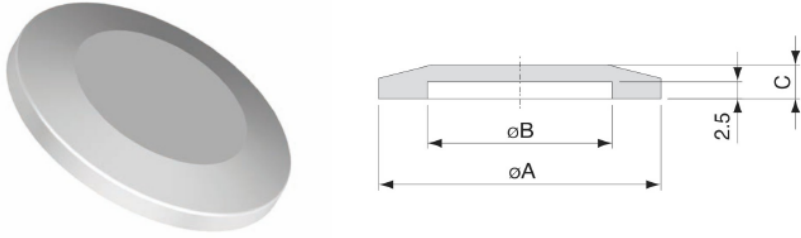
- Centering Ring : 304 S.S. (Other material available upon request)
- O'ring : Viton (Other material available upon request)
- Outer Ring : Aluminum
- Mesh : 304 S.S.
- Temperature Range : 150°C (Viton) 80°C (NBR)
- Larger or special size available upon request

Applications:

- The O'ring is considered a universal sealing device.
- Used as static, dynamic, radial or face seals.
- Vacuum seal.

KF SERIES

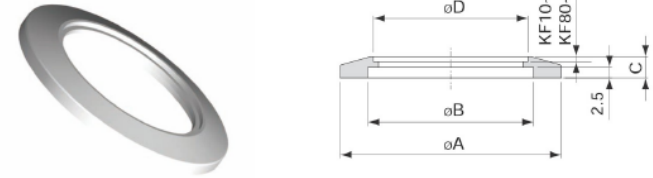
Blank 盲板法兰



型号 Model No.	材质 Material	A	B	C
KF10BS	304 S.S.	30	12.2	5
KF16BS	304 S.S.	30	17.2	5
KF25BS	304 S.S.	40	26.2	5
KF40BS	304 S.S.	55	41.2	5
KF50BS	304 S.S.	75	52.2	5
KF63BS	304 S.S.	87	70	5
KF80BS	304 S.S.	114	83	12
KF100BS	304 S.S.	134	102	12
KF160BS	304 S.S.	190	153	12
KF10BA	Aluminum	30	12.2	5
KF16BA	Aluminum	30	17.2	5
KF25BA	Aluminum	40	26.2	5
KF40BA	Aluminum	55	41.2	5
KF50BA	Aluminum	75	52.2	5
KF63BA	Aluminum	87	70	5
KF80BA	Aluminum	114	83	12
KF100BA	Aluminum	134	102	12
KF160BA	Aluminum	190	153	12

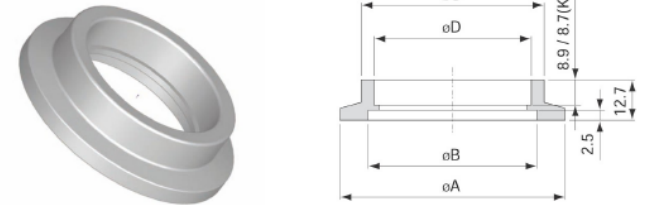
KF SERIES

Bored Blank 开孔盲板(快焊片)



型号 Model No.	材质 Material	A	B	C	D
KF10B12	304 S.S.	30	12.2	5	12.9
KF16B19	304 S.S.	30	17.2	5	19.3
KF25B25	304 S.S.	40	26.2	5	25.7
KF40B38	304 S.S.	55	41.2	5	38.4
KF50B51	304 S.S.	75	52.2	5	51
KF63B63	304 S.S.	87	70	5	63.7
KF80B76	304 S.S.	114	83	12	76.8
KF100B102	304 S.S.	134	102	12	102.2
KF160B153	304 S.S.	190	153	12	152.9

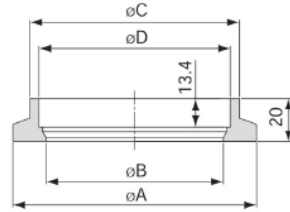
Socket Weld Flange (KF10~KF63) 插焊真空接头



型号 Model No.	材质 Material	A	B	C	D
KF10WS	304 S.S.	30	12.2	16.5	13
KF16WS	304 S.S.	30	17.2	20.5	19.3
KF25WS	304 S.S.	40	26.2	29	25.7
KF40WS	304 S.S.	55	41.2	44.7	38.4
KF50WS	304 S.S.	75	52.2	57.4	51
KF63WS	304 S.S.	87	70	67.5	63.7

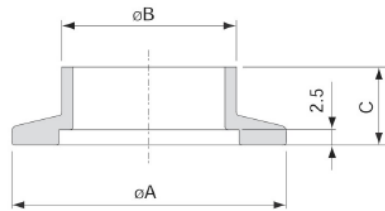
KF SERIES

Socket Weld Flange (KF80~KF160) 插焊法兰



型号 Model No.	材质 Material	A	B	C	D
KF80WS	304 S.S.	114	83	98	89.5
KF100WS	304 S.S.	134	102	118	114.5
KF160WS	304 S.S.	190	153	174	165.5

Half Nipple (Short) 真空接头 (短)



型号 Model No.	材质 Material	A	B	C	执行标准 Available Area
KF10SHNSA	304 S.S.	30	12.7	12.7	U.S.A. (美标)
KF16SHNSA	304 S.S.	30	19.05	12.7	U.S.A. (美标)
KF25SHNSA	304 S.S.	40	25.4	12.7	U.S.A. (美标)
KF40SHNSA	304 S.S.	55	38.1	19.1	U.S.A. (美标)
KF50SHNSA	304 S.S.	75	50.8	19.1	U.S.A. (美标)

Special Sizes Available Upon Request 可根据要求提供特殊尺寸

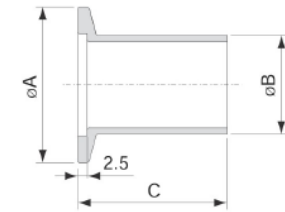
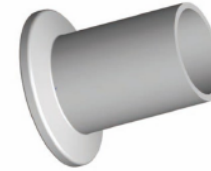
KF10SHNSE	304 S.S.	30	14	30	Europe (欧标)
KF16SHNSE	304 S.S.	30	20	30	Europe (欧标)
KF25SHNSE	304 S.S.	40	28	30	Europe (欧标)
KF40SHNSE	304 S.S.	55	45	30	Europe (欧标)
KF50SHNSE	304 S.S.	75	57	30	Europe (欧标)

Special Sizes Available Upon Request 可根据要求提供特殊尺寸

KF25SHNSJ27	304 S.S.	40	27.2	20	Japan (日标)
KF40SHNSJ42	304 S.S.	55	42.7	20	Japan (日标)
KF50SHNSJ60	304 S.S.	75	60.5	20	Japan (日标)

KF SERIES

Half Nipple (Long) 真空接头 (加长)



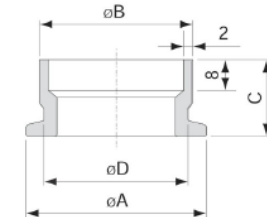
型号 Model No.	材质 Material	A	B	C	执行标准 Available Area
KF10LHNSA	304 S.S.	30	12.7	40	U.S.A. (美标)
KF16LHNSA	304 S.S.	30	19.05	40	U.S.A. (美标)
KF25LHNSA	304 S.S.	40	25.4	40	U.S.A. (美标)
KF40LHNSA	304 S.S.	55	38.1	40	U.S.A. (美标)
KF50LHNSA	304 S.S.	75	50.8	40	U.S.A. (美标)

KF10LHNAA	Aluminum	30	12.7	40	U.S.A. (美标)
KF16LHNAA	Aluminum	30	19.05	40	U.S.A. (美标)
KF25LHNAA	Aluminum	40	25.4	40	U.S.A. (美标)
KF40LHNAA	Aluminum	55	38.1	40	U.S.A. (美标)
KF50LHNAA	Aluminum	75	50.8	40	U.S.A. (美标)

Special Sizes Available Upon Request 可根据要求提供特殊尺寸

KF10LHNSE	304 S.S.	30	14	70	Europe (欧标)
KF16LHNSE	304 S.S.	30	20	70	Europe (欧标)
KF25LHNSE	304 S.S.	40	28	70	Europe (欧标)
KF40LHNSE	304 S.S.	55	45	70	Europe (欧标)
KF50LHNSE	304 S.S.	75	57	70	Europe (欧标)
KF50LHNSJ	304 S.S.	75	60.5	40	Japan (日标)

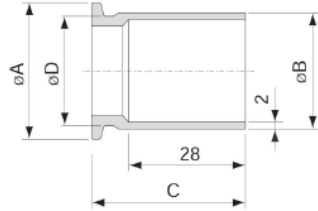
Half Nipple (Short for JIS Pipe) 真空接头 (JIS)



型号 Model No.	材质 Material	A	B	C	D	执行标准 Available Area
KF25SHNSJ34	304 S.S.	40	34	20	32	Japan (日标)
KF40SHNSJ48	304 S.S.	55	48.6	20	45	Japan (日标)

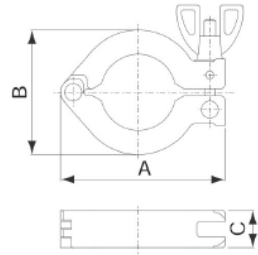
KF SERIES

Half Nipple (Long for JIS Pipe) 真空接头 (JIS 加长)



型号 Model No.	材质 Material	A	B	C	D	执行标准 Available Area
KF25LHNSJ	304 S.S.	40	34	40	32	Japan (目标)
KF40LHNSJ	304 S.S.	55	48.6	40	45	Japan (目标)

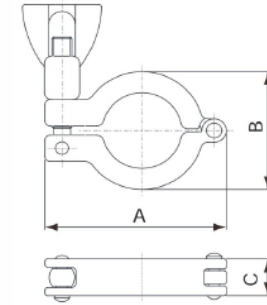
Clamp 卡箍



型号 Model No.	材质 Material	A	B	C	表面处理 Surface Treatment
KF16CLA	Aluminum	63	42.5	16	
KF25CLA	Aluminum	72	54	16	
KF40CLA	Aluminum	90	70	16	
KF50CLA	Aluminum	114	90	20	
KF16CLA-NP	Aluminum	63	42.5	16	Nickel Plating
KF25CLA-NP	Aluminum	72	54	16	Nickel Plating
KF40CLA-NP	Aluminum	90	70	16	Nickel Plating
KF50CLA-NP	Aluminum	114	90	20	Nickel Plating

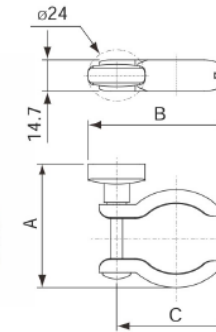
KF SERIES

Clamp-304S.S. 卡箍



型号 Model No.	材质 Material	A	B	C
KF16CL-304	304 S.S.	59.5	36	15.5
KF25CL-304	304 S.S.	73.5	49	15.5
KF40CL-304	304 S.S.	90	64	16
KF50CL-304	304 S.S.	112	82	20

Spring Clamp 弹簧卡箍 - 塑料螺帽 With plastic nut



型号 Model No.	A	B	C
KF10SCLS	50	52	40
KF16SCLS	50	52	40
KF25SCLS	58	59	48
KF40SCLS	72	73	62
KF50SCLS	91	96	84

特色

重量轻, 成本低, 无需组装空间限制。

Features

Specifications
Light, low cost and without assembly space limit.

规格

材料:

可根据要求更换紧固螺母。

a. 箱体: 304S.S.

b. 螺栓: 304S.S.

c. 塑料螺母: ABS.

Specifications

Material:

Could change fasten nut on request.

a. Body: 304S.S.

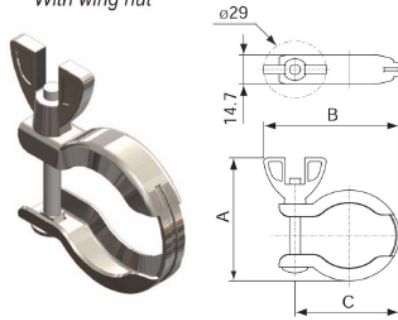
b. Bolt: 304S.S.

c. Plastic Nut: ABS.

KF SERIES

Spring Clamp 弹簧卡箍 - 蝶形螺母

With wing nut



特色

重量轻, 成本低, 无需组装空间限制。

Features

Specifications
Light, low cost and without assembly space limit.

规格

材料:
可根据要求更换紧固螺母。
a. 推体: 304S.S.
b. 螺栓: 304S.S.
c. 翼形螺母: 304S.S.

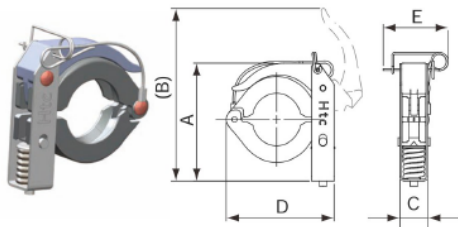
Specifications

Material:
Could change fasten nut on request.
a. Body: 304S.S.
b. Bolt: 304S.S.
c. Wing Nut: 304S.S.

型号 Model No.	A	B	C
KF10SCLSW	55	54	40
KF16SCLSW	55	54	40
KF25SCLSW	63	62	48
KF40SCLSW	77	76	62
KF50SCLSW	96	99	84

Toggle Clamp 锁扣卡箍

With Lock



特色

可以插入锁销以防止肘杆意外释放。

Features

A lock pin can be inserted to prevent accidental release of the toggle lever.

规格

材料:
易于快速安装和卸载。
无手动自调整夹具
过度拧紧。
a. 推体: 铝, 不锈钢
b. 销: 304S.S.
c. 弹簧座: 304S.S.

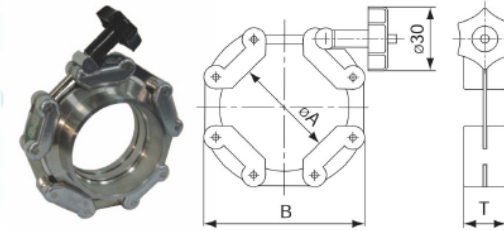
Specifications

Material:
Easy for quick installation and uninstal.
Self-adjusting clamp without manual over tightening.
a. Body: Aluminum
b. Pin: 304S.S.
c. Spring seat: 304S.S.

型号 Model No.	A	B	C	D	E
KF16TCLA	66	(97)	20	63	43
KF25TCLA	75	(106)	20	74	43
KF40TCLA	85	(123)	20	90	43
KF50TCLA	118	(165)	23	115	43

KF SERIES

KF Chain Clamps (KF16~KF63) 链条式卡箍



特色

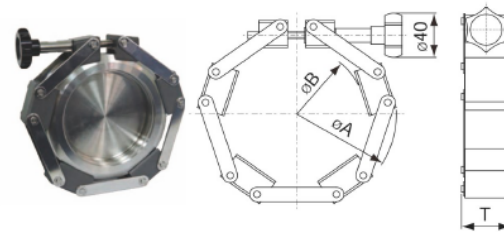
由压力压铸铝合金或不锈钢(304)制成的连杆。
快速打开和关闭夹具。
夹具设计允许高密封力。

Features

Links constructed of pressure die-cast aluminum alloy.
Quick opening and closing of clamp.
Clamp design allows for high-sealing forces.

型号 Model No.	法兰尺寸 Flange size	材质 Material	A	B	T
CC-N-16	KF10/KF16	Block Aluminum /304	22	56	20.3
CC-N-25	KF25	Block Aluminum /304	32	66	20.3
CC-N-40	KF40	Block Aluminum /304	46	80	20.3
CC-N-50	KF50	Block Aluminum /304	69	100	20.3
CC-N-63	KF63	Block Aluminum /304	78	112	20.3

KF Chain Clamps (KF80~KF200) 链条式卡箍



特色

由压力压铸铝合金或不锈钢(304)制成的连杆。
销和连杆由不锈钢制成。
快速打开和关闭夹具。
夹具设计允许高密封力。

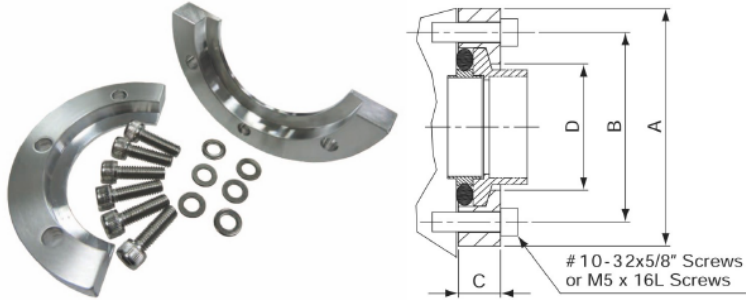
Features

Links constructed of pressure die-cast aluminum alloy.
Pins & Links constructed of stainless steel.
Quick opening and closing of clamp.
Clamp design allows for high-sealing forces.

型号 Model No.	法兰尺寸 Flange size	材质 Material	A	B	T
CC-N-80	KF80	Block Aluminum /304	165	99.8	37.1
CC-N-100	KF100	Block Aluminum /304	185	120.7	37.1
CC-N-125	KF125	Block Aluminum /304	210	149.5	37.1
CC-N-160	KF160	Block Aluminum /304	235	177.5	37.1
CC-N-200	KF200	Block Aluminum /304	300	240.3	37.1

KF SERIES

☞ Bulkhead Clamp 卡箍(舱壁隔板)



特点:

这些铝制或不锈钢(304)隔板卡箍用于将KF法兰固定到真空工艺系统。适用于底板或平板,安装面上有六个或八个#10-32 UNF(或M5x16L)螺纹螺栓孔。夹钳与标准KF密封组件(KF法兰和带O型圈的定心环)对齐,并紧固到配合螺栓孔上,以在连接对之间形成真空密封。

隔板卡箍的标准尺寸为KF-10、KF-16、KF-25、KF-40和KF-50。

选择合适的O型圈产品时,请考虑O型圈材料的热膨胀系数和组件的环境温度。

Features:

These aluminum Bulkhead Clamps are used to fasten KF flanges to vacuum process systems. Adapts to baseplates or flat walls with six or eight #10-32 UNF(or M5x16L) threaded bolt holes on the mounting surface. The clamp is aligned with the standard KF seal assembly (a KF flange and a centering ring with O'ring) and fastened to the mating bolt holes to form the vacuum seal between the connecting pairs.

The standard sizes for Bulkhead Clamps are KF-10, KF-16, KF-25, KF-40, and KF-50.

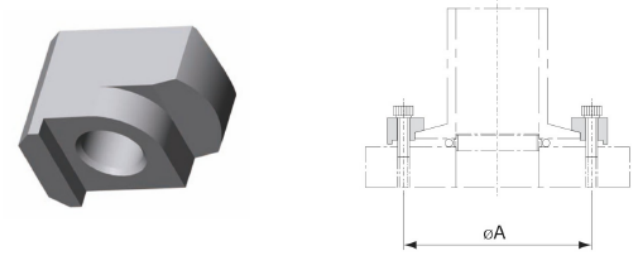
Please consider the coefficient of thermal expansion of oring material and environmental temperature of assembly when choosing the proper oring product.

型号 Model No.	材质 Material	A	B	C	D	螺栓尺寸 Bolt Size* No
NW-16-BCP	Aluminum/304	50.8	38.1	9.17	22.86	#10-32x5/8" L*6
NW-25-BCP	Aluminum/304	60.2	48.01	9.83	32	#10-32x5/8" L*6
NW-40-BCP	Aluminum/304	74.68	61.98	9.3	46.22	#10-32x5/8" L*6
NW-50-BCP	Aluminum/304	95.25	82.6	10.26	59.69	#10-32x5/8" L*8
NW-16-BCP-M	Aluminum/304	50.8	38.1	9.17	22.86	M5x16L*6
NW-25-BCP-M	Aluminum/304	60.2	48.01	9.83	32	M5x16L*6
NW-40-BCP-M	Aluminum/304	74.68	61.98	9.3	46.22	M5x16L*6
NW-50-BCP-M	Aluminum/304	95.25	82.6	10.26	59.69	M5x16L*8

The part numbers in the table include the bolts.
表中的零件号包括螺栓

KF SERIES

☞ Nail Clamp 单边卡钳



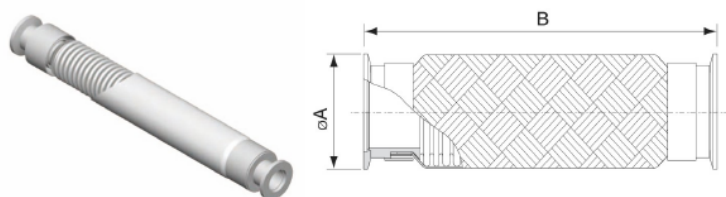
型号 Model No.	材质 Material	A	螺栓尺寸 Bolt Size	适合的尺寸 Fits Size	数量 Quantity
KF-NCA	Aluminum	43	M6*20L	KF10	3
KF-NCA	Aluminum	43	M6*20L	KF16	3
KF-NCA	Aluminum	53	M6*20L	KF25	4
KF-NCA	Aluminum	68	M6*20L	KF40	4
KF-NCA	Aluminum	88	M6*20L	KF50	6

☞ Cap 堵头



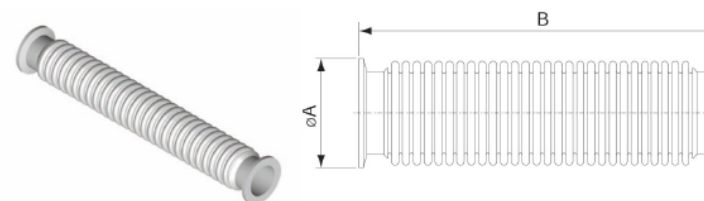
型号 Model No.	材质 Material	A
KF10CAP	PTFE	KF10
KF16CAP	PTFE	KF16
KF25CAP	PTFE	KF25
KF40CAP	PTFE	KF40
KF50CAP	PTFE	KF50
KF63CAP	PTFE	KF63
KF80CAP	PTFE	KF80
KF100CAP	PTFE	KF100

☞ KF Braided Flexible Hoses 编织波纹管



型号 Model No.	材质 Material	A	B
KF16BFX250	304 S.S.	30	250
KF16BFX500	304 S.S.	30	500
KF16BFX750	304 S.S.	30	750
KF16BFX1000	304 S.S.	30	1000
KF25BFX250	304 S.S.	40	250
KF25BFX500	304 S.S.	40	500
KF25BFX750	304 S.S.	40	750
KF25BFX1000	304 S.S.	40	1000
KF40BFX250	304 S.S.	55	250
KF40BFX500	304 S.S.	55	500
KF40BFX750	304 S.S.	55	750
KF40BFX1000	304 S.S.	55	1000
KF50BFX250	304 S.S.	75	250
KF50BFX500	304 S.S.	75	500
KF50BFX750	304 S.S.	75	750
KF50BFX1000	304 S.S.	75	1000

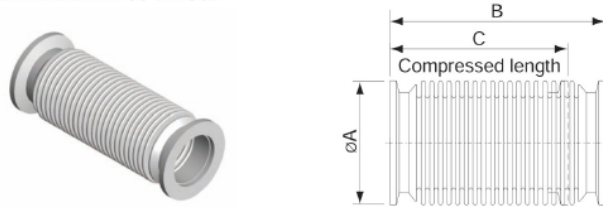
☞ KF Flexible Hoses 波纹管



型号 Model No.	材质 Material	A	B
KF16FX250	304 S.S.	30	250
KF16FX500	304 S.S.	30	500
KF16FX750	304 S.S.	30	750
KF16FX1000	304 S.S.	30	1000
KF25FX250	304 S.S.	40	250
KF25FX500	304 S.S.	40	500
KF25FX750	304 S.S.	40	750
KF25FX1000	304 S.S.	40	1000
KF40FX250	304 S.S.	55	250
KF40FX500	304 S.S.	55	500
KF40FX750	304 S.S.	55	750
KF40FX1000	304 S.S.	55	1000
KF50FX250	304 S.S.	75	250
KF50FX500	304 S.S.	75	500
KF50FX750	304 S.S.	75	750
KF50FX1000	304 S.S.	75	1000

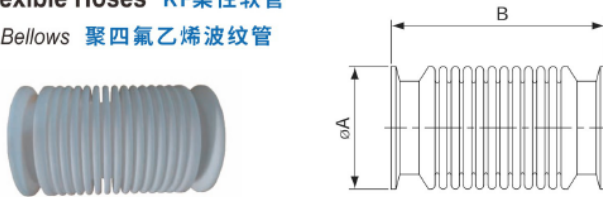
KF SERIES

☞ KF Compressible Bellows Connections 真空接头连接波纹管 (软管)



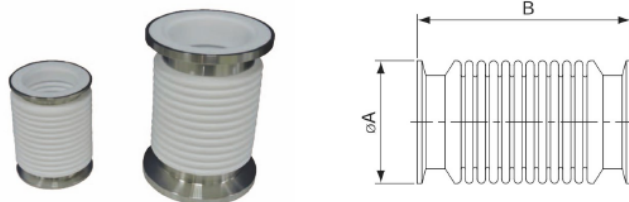
型号 Model No.	材质 Material	A	B	C
KF10FXC100	304 S.S.	30	100	80
KF16FXC100	304 S.S.	30	100	80
KF25FXC100	304 S.S.	40	100	80
KF40FXC100	304 S.S.	55	100	80
KF50FXC100	304 S.S.	75	100	80

☞ KF Flexible Hoses KF柔性软管 Teflon Bellows 聚四氟乙烯波纹管



型号 Model No.	材质 Material	A	B
KF40FX100T	TEFLON	55	100
KF50FX100T	TEFLON	75	100

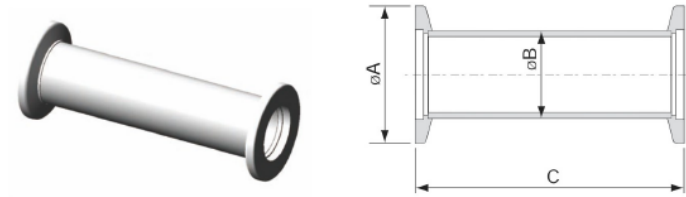
Teflon bellows with Metal flange frame 带真空接头的聚四氟乙烯波纹管



型号 Model No.	材质 Material	A	B
KF40FX100TS	TEFLON	55	100
KF50FX100TS	TEFLON	75	100

KF SERIES

☞ KF Full Nipples 真空直管

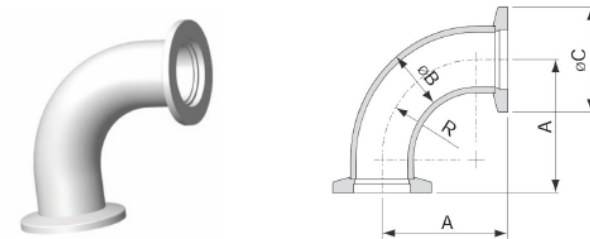


型号 Model No.	材质 Material	A	B	C
KF16N80	304 S.S.	30	19.05	80
KF25N100	304 S.S.	40	25.4	100
KF40N130	304 S.S.	55	38.1	130
KF50N140	304 S.S.	75	50.8	140

* Part number plus "K" for sand blasting surface
* Part number plus "L" for polished surface

* 零件编号加 "K" 用于喷砂表面
* 零件编号加 "L", 用于抛光表面

☞ KF 90° Elbows 90°真空弯头



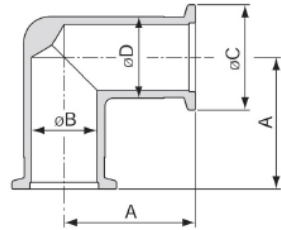
型号 Model No.	材质 Material	A	B	C	D	执行标准 Available Area
KF16EL90A	304 S.S.	38.3	19.05	30	28.6	U.S.A. (美标)
KF25EL90A	304 S.S.	56.2	25.4	40	38.1	U.S.A. (美标)
KF40EL90A	304 S.S.	78.4	38.1	55	57.2	U.S.A. (美标)
KF50EL90A	304 S.S.	107	50.8	75	76.2	U.S.A. (美标)
KF16EL90E	304 S.S.	40	19.05	30	28.6	Europe (欧标)
KF25EL90E	304 S.S.	50.8	25.4	40	38.1	Europe (欧标)
KF40EL90E	304 S.S.	65	38.1	55	57.2	Europe (欧标)
KF50EL90E	304 S.S.	80	50.8	75	76.2	Europe (欧标)

* Special Size Available Upon Request.
* Part number plus "K" for sand blasting surface
* Part number plus "L" for polished surface

* 可根据要求提供特殊尺寸。
* 零件编号加 "K" 用于喷砂表面
* 零件编号加 "L", 用于抛光表面

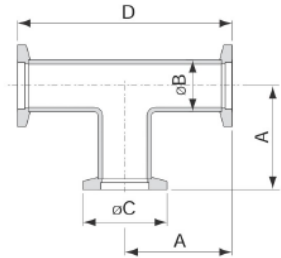
KF SERIES

KF 90° Elbows 真空直角弯头



型号 Model No.	材质 Material	A	B	C	D	执行标准 Available Area
KF16EL90AL	304 S.S.	40	16	30	21	Europe (欧标)
KF25EL90AL	304 S.S.	50	25	40	31	Europe (欧标)
KF40EL90AL	304 S.S.	65	39	55	45	Europe (欧标)

KF Tees 真空三通



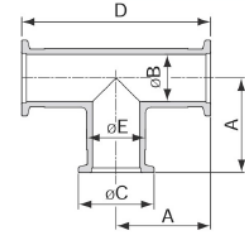
型号 Model No.	材质 Material	A	B	C	D	执行标准 Available Area
KF16TA	304 S.S.	38.3	19.05	30	76.6	U.S.A.(美标)
KF25TA	304 S.S.	51.4	25.4	40	102.8	U.S.A.(美标)
KF40TA	304 S.S.	61	38.1	55	122	U.S.A.(美标)
KF50TA	304 S.S.	80	50.8	75	160	U.S.A.(美标)
KF16TE	304 S.S.	40	19.05	30	80	Europe (欧标)
KF25TE	304 S.S.	50	25.4	40	100	Europe (欧标)
KF40TE	304 S.S.	65	38.1	55	130	Europe (欧标)
KF50TE	304 S.S.	70	50.8	75	140	Europe (欧标)

* Special Size Available Upon Request.
 * Part number plus "K" for sand blasting surface
 * Part number plus "L" for polished surface

* 可根据要求提供特殊尺寸。
 * 零件编号加 "K" 用于喷砂表面
 * 零件编号加 "L", 用于抛光表面

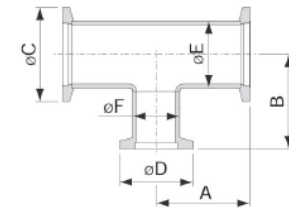
KF SERIES

KF Tees 真空三通



型号 Model No.	材质 Material	A	B	C	D	E	执行标准 Available Area
KF16TEAL	304 S.S.	40	16	30	80	21	Europe (欧标)
KF25TEAL	304 S.S.	50	25	40	100	31	Europe (欧标)
KF40TEAL	304 S.S.	65	39	55	130	45	Europe (欧标)

KF Unequal Tees 真空变径三通



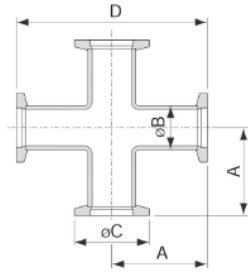
型号 Model No.	材质 Material	A	B	C	D	E	F	执行标准 Available Area
KF25UT16A	304 S.S.	52	37.5	40	30	25.4	19.05	U.S.A.(美标)
KF40UT16A	304 S.S.	61	52	55	30	38.1	19.05	U.S.A.(美标)
KF40UT25A	304 S.S.	61	57.8	55	40	38.1	25.4	U.S.A.(美标)
KF50UT16A	304 S.S.	80	58.2	75	30	50.8	19.05	U.S.A.(美标)
KF50UT25A	304 S.S.	80	64.1	75	40	50.8	25.4	U.S.A.(美标)
KF50UT40A	304 S.S.	80	67.3	75	55	50.8	38.1	U.S.A.(美标)
KF25UT16E	304 S.S.	50	40	40	30	25.4	19.05	Europe (欧标)
KF40UT16E	304 S.S.	65	40	55	30	38.1	19.05	Europe (欧标)
KF40UT25E	304 S.S.	65	50	55	40	38.1	25.4	Europe (欧标)
KF50UT16E	304 S.S.	70	50	75	30	50.8	19.05	Europe (欧标)
KF50UT25E	304 S.S.	70	65	75	40	50.8	25.4	Europe (欧标)
KF50UT40E	304 S.S.	70	65	75	55	50.8	38.10	Europe (欧标)

* Special Size Available Upon Request.
 * Part number plus "K" for sand blasting surface
 * Part number plus "L" for polished surface

* 特殊尺寸可根据要求提供。
 * 喷砂表面零件号加 "K"
 * 零件号加上抛光表面的 "L"

KF SERIES

KF 4-Way Crosses 真空四通

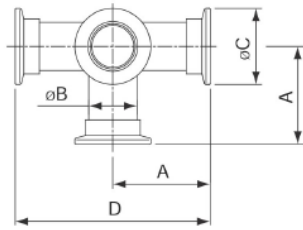


型号 Model No.	材质 Material	A	B	C	D	执行标准 Available Area
KF16XA	304 S.S.	38.3	19.05	30	76.6	U.S.A.
KF25XA	304 S.S.	51.4	25.4	40	102.8	U.S.A.
KF40XA	304 S.S.	61	38.1	55	122	U.S.A.
KF50XA	304 S.S.	80	50.8	75	160	U.S.A.
KF16XE	304 S.S.	40	19.05	30	80	Europe
KF25XE	304 S.S.	50	25.4	40	100	Europe
KF40XE	304 S.S.	65	38.1	55	130	Europe
KF50XE	304 S.S.	70	50.8	75	140	Europe

* Special Size Available Upon Request.
 * Part number plus "K" for sand blasting surface
 * Part number plus "L" for polished surface

*特殊尺寸可根据要求提供。
 *喷砂表面零件号加“K”
 *零件号加上抛光表面的“L”

KF Five-Way Crosses 真空五通



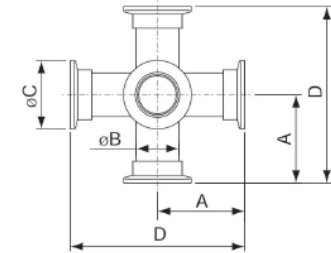
型号 Model No.	材质 Material	A	B	C	D
KF16FXA	304 S.S.	38.3	19.05	30	76.6
KF25FXA	304 S.S.	51.4	25.4	40	102.8
KF40FXA	304 S.S.	61	38.1	55	122
KF50FXA	304 S.S.	80	50.8	75	160

* Part number plus "K" for sand blasting surface
 * Part number plus "L" for polished surface

*喷砂表面零件号加“K”
 *零件号加上抛光表面的“L”

KF SERIES

KF Six-Way Crosses 真空六通

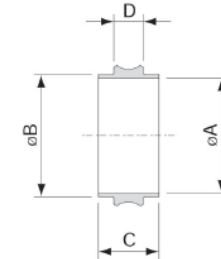


型号 Model No.	材质 Material	A	B	C	D
KF16SXA	304 S.S.	38.3	19.05	30	76.6
KF25SXA	304 S.S.	51.4	25.4	40	102.8
KF40SXA	304 S.S.	61	38.1	55	122
KF50SXA	304 S.S.	80	50.8	75	160

* Part number plus "K" for sand blasting surface
 * Part number plus "L" for polished surface

*喷砂表面零件号加“K”
 *零件号加上抛光表面的“L”

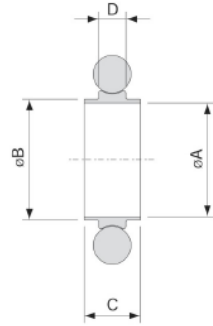
KF Centering Ring 中心支架



型号 Model No.	材质 Material	A	B	C	D
KF10CRS	304 S.S.	10	12	8	3.9
KF16CRS	304 S.S.	16	17	8	3.9
KF25CRS	304 S.S.	25	26	8	3.9
KF40CRS	304 S.S.	40	41	8	3.9
KF50CRS	304 S.S.	50	52	8	3.9
KF10CRA	Al	10	12	8	3.9
KF16CRA	Al	16	17	8	3.9
KF25CRA	Al	25	26	8	3.9
KF40CRA	Al	40	41	8	3.9
KF50CRA	Al	50	52	8	3.9

KF SERIES

☞ KF Centering Ring with O'Ring 中心支架+O型圈



型号 Model No.	材质 Material C/R	O型圈材质 Material O'Ring	A	B	C	D	O型圈尺寸 O'Ring Size
KF10CRVS	304 S.S.	Viton(氟橡胶)	10	12	8	3.9	AS-311
KF16CRVS	304 S.S.	Viton(氟橡胶)	16	17	8	3.9	AS-314
KF25CRVS	304 S.S.	Viton(氟橡胶)	25	26	8	3.9	AS-320
KF40CRVS	304 S.S.	Viton(氟橡胶)	40	41	8	3.9	AS-326
KF50CRVS	304 S.S.	Viton(氟橡胶)	50	52	8	3.9	AS-330
KF10CRVA	Al	Viton(氟橡胶)	10	12	8	3.9	AS-311
KF16CRVA	Al	Viton(氟橡胶)	16	17	8	3.9	AS-314
KF25CRVA	Al	Viton(氟橡胶)	25	26	8	3.9	AS-320
KF40CRVA	Al	Viton(氟橡胶)	40	41	8	3.9	AS-326
KF50CRVA	Al	Viton(氟橡胶)	50	52	8	3.9	AS-330
KF10CRNS	304 S.S.	NBR(丁腈)	10	12	8	3.9	AS-311
KF16CRNS	304 S.S.	NBR(丁腈)	16	17	8	3.9	AS-314
KF25CRNS	304 S.S.	NBR(丁腈)	25	26	8	3.9	AS-320
KF40CRNS	304 S.S.	NBR(丁腈)	40	41	8	3.9	AS-326
KF50CRNS	304 S.S.	NBR(丁腈)	50	52	8	3.9	AS-330
KF10CRNA	Al	NBR(丁腈)	10	12	8	3.9	AS-311
KF16CRNA	Al	NBR(丁腈)	16	17	8	3.9	AS-314
KF25CRNA	Al	NBR(丁腈)	25	26	8	3.9	AS-320
KF40CRNA	Al	NBR(丁腈)	40	41	8	3.9	AS-326
KF50CRNA	Al	NBR(丁腈)	50	52	8	3.9	AS-330

* O'Ring color for NBR material is black, brown is available upon request.

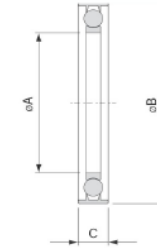
* O'Ring color for Viton material is brown, black is available upon request.

*NBR材料的O型圈颜色为黑色,棕色可根据要求提供。

*氟橡胶材料的O型圈颜色为棕色,黑色可根据要求提供。

KF SERIES

☞ KF Centering Ring with Outer Ring & O'Ring 中心支架+O型圈+外环

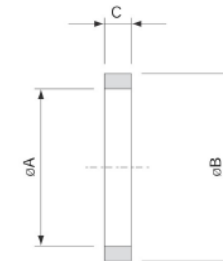


型号 Model No.	材质 Material C/R	材质 Material O/R	O型圈材质 Material O'Ring	A	B	C	O型圈尺寸 O'Ring Size
KF16OCRVS	304 S.S.	Al	Viton(氟橡胶)	16	32.5	8	5018
KF25OCRVS	304 S.S.	Al	Viton(氟橡胶)	25	42.5	8	5028
KF40OCRVS	304 S.S.	Al	Viton(氟橡胶)	40	57.5	8	5042
KF50OCRVS	304 S.S.	Al	Viton(氟橡胶)	50	77.5	8	AS-330
KF16OCRVS-316	316 S.S.	Al	Viton(氟橡胶)	16	32.5	8	5018
KF25OCRVS-316	316 S.S.	Al	Viton(氟橡胶)	25	42.5	8	5028
KF40OCRVS-316	316 S.S.	Al	Viton(氟橡胶)	40	57.5	8	5042
KF50OCRVS-316	316 S.S.	Al	Viton(氟橡胶)	50	77.5	8	AS-330

* O'Ring color is brown, black is available upon request.

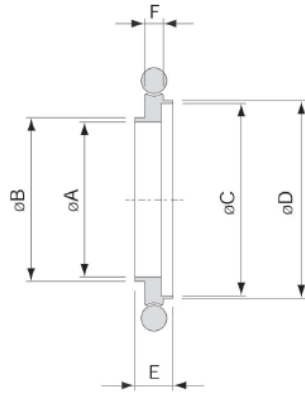
*O型圈颜色为棕色,黑色可根据要求提供。

☞ KF Overpressure Ring 超压环



型号 Model No.	材质 Material	A	B	C
KF10OPR	304 S.S.	23.5	28	3.7
KF16OPR	304 S.S.	30.12	31.75	3.7
KF25OPR	304 S.S.	38.86	40.4	3.7
KF40OPR	304 S.S.	54	57.15	3.7
KF50OPR	304 S.S.	66.55	69.85	3.7
ISO63OPR	304 S.S.	87.1	93	3.9
ISO80OPR	304 S.S.	100.2	106	3.9
ISO100OPR	304 S.S.	119.3	125.3	3.9
ISO160OPR	304 S.S.	170.4	176.4	3.9

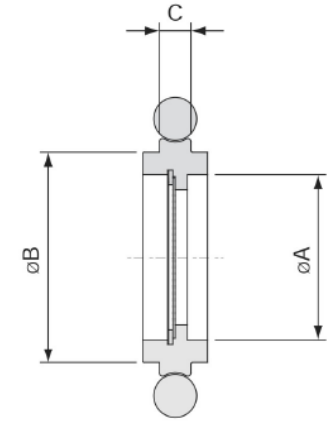
☑ KF Centering Ring Adaptor & O'Ring
变径中心支架+O型圈



型号 Model No.	材质 Material C/R	O型圈材质 Material O'Ring	A	B	C	D	E	F	O型圈尺寸 O'Ring Size
KF10CR16VS	304 S.S.	Viton(氟橡胶)	10	12	16	17	8	3.9	AS-314
KF20CR25VS	304 S.S.	Viton(氟橡胶)	20	22	25	26	8	3.9	AS-320
KF32CR40VS	304 S.S.	Viton(氟橡胶)	32	34	40	41	8	3.9	AS-326
KF10CR16VA	AI	Viton(氟橡胶)	10	12	16	17	8	3.9	AS-314
KF20CR25VA	AI	Viton(氟橡胶)	20	22	25	26	8	3.9	AS-320
KF32CR40VA	AI	Viton(氟橡胶)	32	34	40	41	8	3.9	AS-326
KF10CR16NS	304 S.S.	NBR(丁腈)	10	12	16	17	8	3.9	AS-314
KF20CR25NS	304 S.S.	NBR(丁腈)	20	22	25	26	8	3.9	AS-320
KF32CR40NS	304 S.S.	NBR(丁腈)	32	34	40	41	8	3.9	AS-326
KF10CR16NA	AI	NBR(丁腈)	10	12	16	17	8	3.9	AS-314
KF20CR25NA	AI	NBR(丁腈)	20	22	25	26	8	3.9	AS-320
KF32CR40NA	AI	NBR(丁腈)	32	34	40	41	8	3.9	AS-326

* O'Ring color for NBR material is black, brown is available upon request.
 * O'Ring color for Viton material is brown, black is available upon request.
 * NBR材料的O型圈颜色为黑色,棕色可根据要求提供。
 * 氟橡胶材料的O型圈颜色为棕色,黑色可根据要求提供。

☑ KF Meshed Centering Ring
中心支架(加滤网)



型号 Model No.	材质 Material C/R	O型圈材质 Material O'Ring	滤网(目) Mesh/In ²	A	B	C	O型圈尺寸 O'Ring Size
KF16M3CRVS	304 S.S.	Viton(氟橡胶)	900	12	17	3.9	AS-314
KF25M3CRVS	304 S.S.	Viton(氟橡胶)	900	20.5	26	3.9	AS-320
KF40M3CRVS	304 S.S.	Viton(氟橡胶)	900	35.8	41	3.9	AS-326
KF50M3CRVS	304 S.S.	Viton(氟橡胶)	900	46.3	52	3.9	AS-330
KF63M3CRVS	304 S.S.	Viton(氟橡胶)	900	60.5	69.6	3.9	AS-337
KF80M3CRVS	304 S.S.	Viton(氟橡胶)	900	73.6	82.6	3.9	AS-341
KF100M3CRVS	304 S.S.	Viton(氟橡胶)	900	91.8	101.6	3.9	AS-347
KF16M3CRNS	304 S.S.	NBR(丁腈)	900	12	17	3.9	AS-314
KF25M3CRNS	304 S.S.	NBR(丁腈)	900	20.5	26	3.9	AS-320
KF40M3CRNS	304 S.S.	NBR(丁腈)	900	35.8	41	3.9	AS-326
KF50M3CRNS	304 S.S.	NBR(丁腈)	900	46.3	52	3.9	AS-330
KF63M3CRNS	304 S.S.	NBR(丁腈)	900	60.5	69.6	3.9	AS-337
KF80M3CRNS	304 S.S.	NBR(丁腈)	900	73.6	82.6	3.9	AS-341
KF100M3CRNS	304 S.S.	NBR(丁腈)	900	91.8	101.6	3.9	AS-347

* O'Ring color for NBR material is black, brown is available upon request.
 * O'Ring color for Viton material is brown, black is available upon request.
 * NBR材料的O型圈颜色为黑色,棕色可根据要求提供。
 * 氟橡胶材料的O型圈颜色为棕色,黑色可根据要求提供。



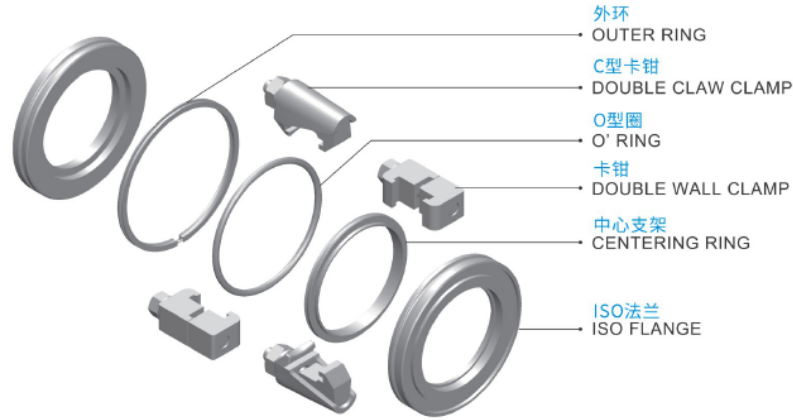
ISO SERIES

ISO系列



产品介绍

General Information



特色:

ISO通用法兰系统的部件由国际标准组织 (ISO) 定义。
ISO法兰系列的结构包括两个光滑的无六角法兰, 它们之间夹着一个组合中心支架配弹性O型圈。
ISO组件可重复使用, 并可与相同尺寸的其他ISO尺寸组件一起更换。

规格:

盲板和法兰: 304 不锈钢 (可根据要求提供其他材料)
密封圈: 304 不锈钢 (可根据要求提供其他材料)
中心支架: 304 不锈钢 (可根据要求提供其他材料)
外环: 铝
卡钳: 铝、不锈钢、钢镀层
紧固扭矩: 1~1.4kg·m
O型圈: 氟橡胶或NBR
温度范围: 150°C (氟橡胶) 80°C (丁腈橡胶)
真空率: $1 \cdot 10^{-8}$ mbar

Features:

The components of ISO universal flange system are defined by the International Standards Organization (ISO).
The construction of ISO flange series includes two smooth-faced sexless flanges clamped together with a combination metal centering ring and elastomeric O-ring between them.
ISO components are reusable and changeable with other ISO dimension components of the same size.

Specifications:

Blanks & Flanges : 304 S.S. (Other material available upon request)
Retainer Rings : 304 S.S. (Other material available upon request)
Centering Rings : 304 S.S. (Other material available upon request)
Outer Rings : Aluminum
Clamps : Aluminum, Stainless steel, Steel plated
Fastening torque: 1~1.4kg·m
O' ring material: Viton or NBR
Temperature Range : 150°C (Viton) 80°C (NBR)
Vacuum Rate : $1 \cdot 10^{-8}$ mbar

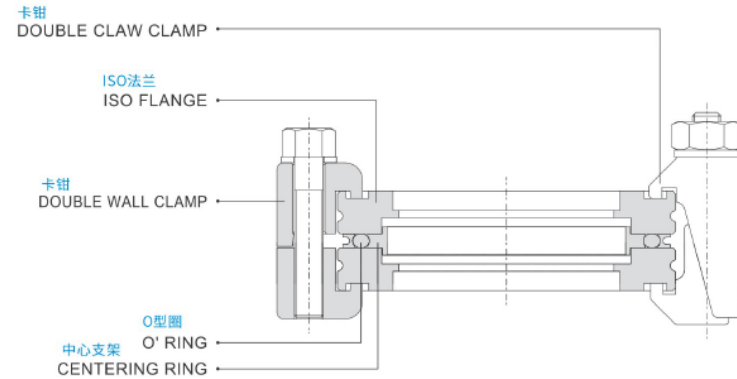
卡箍组件

Complete Clamp Assemblies

该系统是通用的, 因为可以通过多种方式组装部件。
The system is versatile because of the many ways in which components can be assembled.

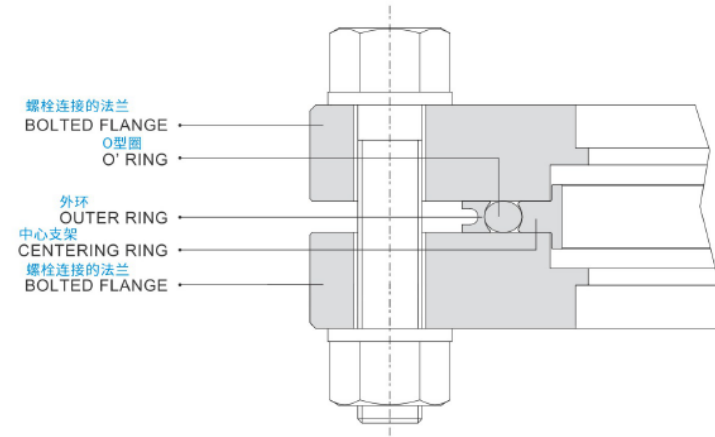
1 C型卡钳/卡钳 Double Wall-Clamp or Double Claw Clamp

图示用于连接成对ISO法兰的双壁(爪形)卡钳组件。易用性和经济性使其成为最常用的配置。
Illustrates the double wall (claw) clamp assembly to connect pairs of ISO flanges. Ease of use and economic make this the most commonly used configuration.



2 螺栓固定不可旋转 Bolted Nonrotatable

两个螺栓法兰以正常方式连接。
The two bolt flanges connected in the normal way.



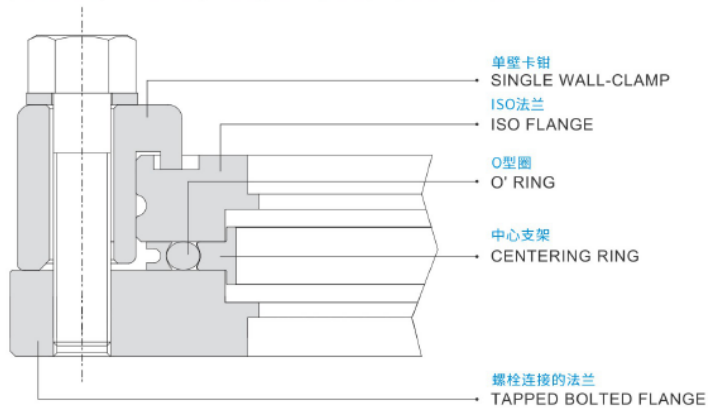
产品介绍

General Information

③ 单壁卡钳 Single Wall Clamp

单壁卡钳用于连接ISO法兰和泵、腔体或闸阀上的攻丝法兰。

Single wall clamps are used to join an ISO flange to a tapped flange on a pump, chamber or gate valve.



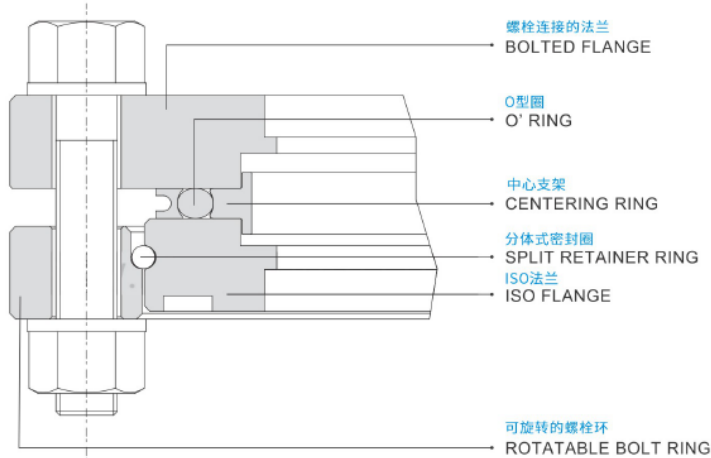
③ 螺栓固定的可旋转式 Bolted Rotatable

这种紧固方法使ISO法兰可以旋转，便于部件的对准。

此外，可旋转的螺栓环可以用螺栓将ISO法兰固定在不可旋转的法兰上。

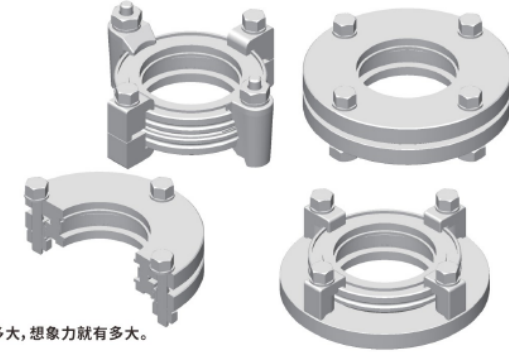
This fastening method allows the ISO flange to be rotated for ease of component alignment.

Additionally, a rotatable bolt ring can be used to fasten an ISO flange to a non-rotatable flange using bolt.



ISO分体式挡圈

Application for ISO Components



这个系统的应用有多大，想象力就有多大。

应用领域：

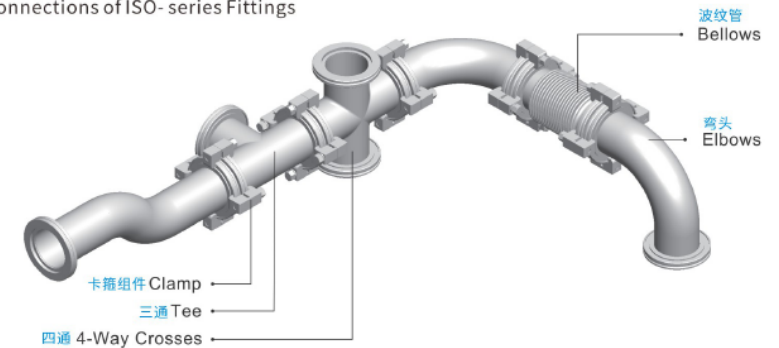
Applications for this system are as varied as the imagination can make them.

Some examples are:

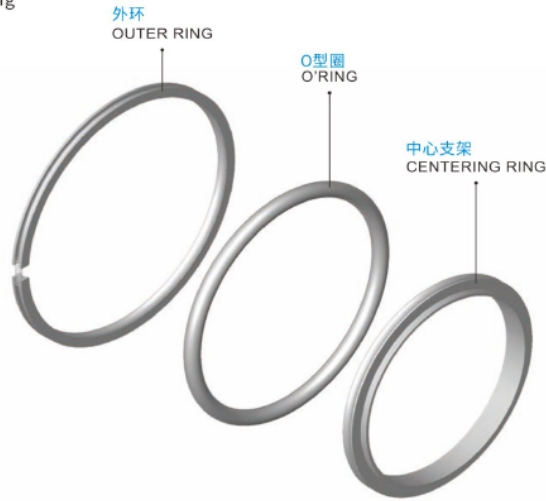
- ① 大型真空系统的粗加工和前线管道。
- ② 高真空、高导电性、相互连接。
- ③ 模块化系统，将经常修改。
- ④ 需要经常清洗的系统。
- ⑤ 研究实验室的实验系统。
- ⑥ Roughing and foreline plumbing for large vacuum system.
- ⑦ High vacuum, high conductance, inter-connections.
- ⑧ Modular system which will be modified frequently.
- ⑨ System requiring frequent cleaning.
- ⑩ Experimental system in research laboratories.

ISO系列接头的连接

Connections of ISO-series Fittings



☞ 中心定位环
Centering Ring



特点:

氟橡胶O型圈可间歇性烘烤到200°C, 持续使用到150°C。
KF系列的真空密封是通过在15°的外法兰表面周围施加均匀的压力来压缩O型圈。
ISO系列的真空密封是通过将O型圈压缩到配合的法兰之间来实现的。
这是通过交替用扳手拧紧相对的一对卡箍或卡钳来实现的, 直到法兰的内表面和中心支架的间隔唇之间第一次出现金属对金属的接触。

规格:

中心支架: 304 S.S. (可根据要求提供其他材料)
O型圈: 氟橡胶 (可根据要求提供其他材料)
外环: 铝合金
网眼: 304 S.S.
温度范围: 150°C (Viton) 80°C (NBR)
可根据要求提供更大或特殊的尺寸

应用:

O型圈被认为是一种通用的密封装置。
可作为静态、动态、径向或面密封使用。
真空密封。

Features:

Viton O'ring bakeable to 200°C Intermittently, sustained use to 150°C.
Vacuum seal of KF-series: O'ring compression by uniform pressure application around the 15° outer flange surface.
The vacuum seal of ISO-series is made by compressing the O'ring between the mating flanges.
This done by alternately wrench-tightening opposing pairs of clamps or bolts until the first metal-to-metal contact is made between the inner surfaces of the flanges and the spacing lips of the centering ring.

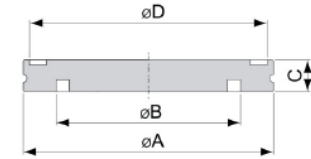
Specifications:

Centering Ring : 304 S.S. (Other material available upon request)
O'ring: Viton (Other material available upon request)
Outer Ring: Aluminum
Mesh: 304 S.S.
Temperature Range : 150°C (Viton) 80°C (NBR)
Larger or special size available upon request

Applications:

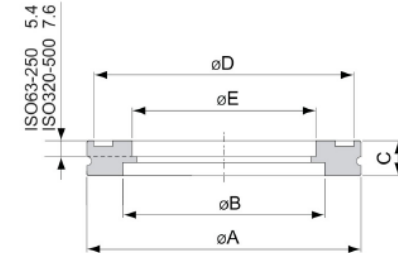
The O'ring is considered a universal sealing device.
Used as static, dynamic, radial or face seals.
Vacuum seal.

☞ Blank 盲板



型号 Model No.	材质 Material	A	B	C	D
ISO63B	304 S.S.	95	70	12	90
ISO80B	304 S.S.	110	83	12	105
ISO100B	304 S.S.	130	102	12	125
ISO160B	304 S.S.	180	153	12	175
ISO200B	304 S.S.	240	213	12	235
ISO250B	304 S.S.	290	261	12	285
ISO320B	304 S.S.	370	318	17	365
ISO400B	304 S.S.	450	400	17	445
ISO500B	304 S.S.	550	501	17	545
ISO630B	304 S.S.	690	651	22	685

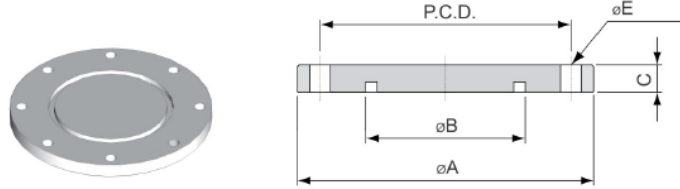
☞ Bored Blank 通孔法兰



型号 Model No.	材质 Material	A	B	C	D	E
ISO63B63	304 S.S.	95	70	12	90	63.7
ISO80B76	304 S.S.	110	83	12	105	76.8
ISO100B102	304 S.S.	130	102	12	125	102.2
ISO160B153	304 S.S.	180	153	12	175	152.9
ISO200B204	304 S.S.	240	213	12	235	203.7
ISO250B255	304 S.S.	290	261	12	285	254.5
ISO320B305	304 S.S.	370	318	17	365	305.3
ISO400B407	304 S.S.	450	400	17	445	406.9
ISO500B509	304 S.S.	550	501	17	545	508.8

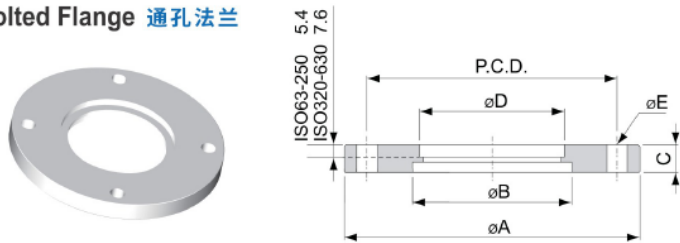
ISO SERIES

ISO Bolted Blank 盲板法兰



型号 Model No.	材质 Material	A	B	C	E*No	P.C.D.
ISO63BB	304 S.S.	130	70	12	9*4	110
ISO80BB	304 S.S.	145	83	12	9*8	125
ISO100BB	304 S.S.	165	102	12	9*8	145
ISO160BB	304 S.S.	225	153	16	11*8	200
ISO200BB	304 S.S.	285	213	16	11*12	260
ISO250BB	304 S.S.	335	261	16	11*12	310
ISO320BB	304 S.S.	425	318	20	14*12	395
ISO400BB	304 S.S.	510	400	20	14*16	480
ISO500BB	304 S.S.	610	501	20	14*16	580
ISO630BB	304 S.S.	750	651	24	14*20	720

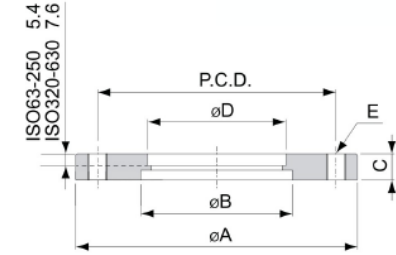
Bolted Flange 通孔法兰



型号 Model No.	材质 Material	A	B	C	D	E*No.	P.C.D.
ISO63BF	304 S.S.	130	70	12	63.7	9*4	110
ISO80BF	304 S.S.	145	83	12	76.8	9*8	125
ISO100BF	304 S.S.	165	102	12	102.2	9*8	145
ISO160BF	304 S.S.	225	153	16	152.9	11*8	200
ISO200BF	304 S.S.	285	213	16	203.7	11*12	260
ISO250BF	304 S.S.	335	261	16	254.5	11*12	310
ISO320BF	304 S.S.	425	318	20	305.3	14*12	395
ISO400BF	304 S.S.	510	400	20	406.9	14*16	480
ISO500BF	304 S.S.	610	501	20	508.8	14*16	580
ISO630BF	304 S.S.	750	651	24	610.4	14*20	720

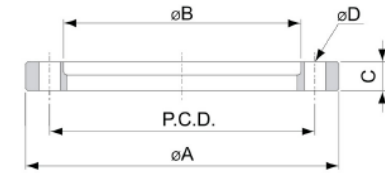
ISO SERIES

Bolted Flange-Tapped 通孔法兰(螺纹孔)



型号 Model No.	材质 Material	A	B	C	D	E*No.	P.C.D.
ISO63BFTAP	304 S.S.	130	70	12	63.7	M8*4	110
ISO80BFTAP	304 S.S.	145	83	12	76.8	M8*8	125
ISO100BFTAP	304 S.S.	165	102	12	102.2	M8*8	145
ISO160BFTAP	304 S.S.	225	153	16	152.9	M10*8	200
ISO200BFTAP	304 S.S.	285	213	16	203.7	M10*12	260
ISO250BFTAP	304 S.S.	335	261	16	254.5	M10*12	310
ISO320BFTAP	304 S.S.	425	318	20	305.3	M12*12	395
ISO400BFTAP	304 S.S.	510	400	20	406.9	M12*16	480
ISO500BFTAP	304 S.S.	610	501	20	508.8	M12*16	580
ISO630BFTAP	304 S.S.	750	651	24	610.4	M12*20	720

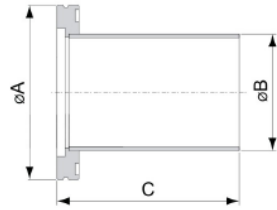
Rotatable Bolt Ring 活套法兰



型号 Model No.	材质 Material	A	B	C	D*No.	P.C.D.
ISO63RBR	304 S.S.	130	98.5	12	9*4	110
ISO80RBR	304 S.S.	145	113.5	12	9*8	125
ISO100RBR	304 S.S.	165	133.5	12	9*8	145
ISO160RBR	304 S.S.	225	185.7	16	11*8	200
ISO200RBR	304 S.S.	285	245.7	16	11*12	260
ISO250RBR	304 S.S.	335	295.7	16	11*12	310
ISO320RBR	304 S.S.	425	375.8	20	14*12	395
ISO400RBR	304 S.S.	510	458.8	20	14*16	480
ISO500RBR	304 S.S.	610	558.8	20	14*16	580

ISO SERIES

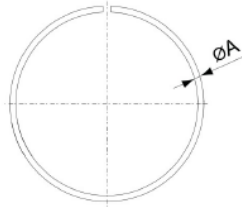
Half Nipple 对焊法兰



型号 Model No.	材质 Material	A	B	C
ISO63HN	304 S.S.	95	63.5	100
ISO80HN	304 S.S.	110	76.2	100
ISO100HN	304 S.S.	130	101.6	100
ISO160HN	304 S.S.	180	152.4	100
ISO200HN	304 S.S.	240	203.2	100
ISO250HN	304 S.S.	290	254	100
ISO320HN	304 S.S.	370	304.8	100
ISO400HN	304 S.S.	450	406.8	100
ISO500HN	304 S.S.	550	508	100

* Part number plus "K" for sand blasting surface * 零件编号加 "K" 用于喷砂表面
 * Part number plus "L" for polished surface * 零件编号加 "L" 用于抛光表面

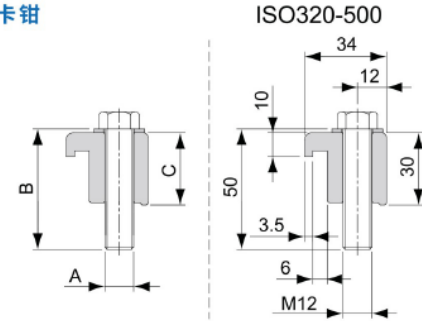
Split Retainer Ring 真空活套环



型号 Model No.	材质 Material	A	适用法兰 Fit Flange
ISO63SRR	304 S.S.	3	ISO63
ISO80SRR	304 S.S.	3	ISO80
ISO100SRR	304 S.S.	3	ISO100
ISO160SRR	304 S.S.	4.5	ISO160
ISO200SRR	304 S.S.	4.5	ISO200
ISO250SRR	304 S.S.	4.5	ISO250
ISO320SRR	304 S.S.	4.5	ISO320
ISO400SRR	304 S.S.	8	ISO400
ISO500SRR	304 S.S.	8	ISO500

ISO SERIES

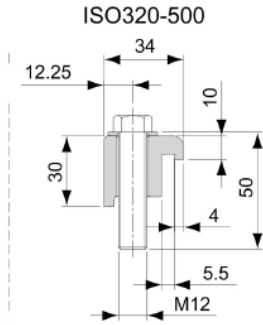
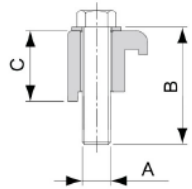
Single Wall Clamp 单边卡钳



型号 Model No.	材质 Material	A	B	C	适用法兰 Fit Flange
ISO63-100SWC304	304 S.S.	M8	35	23	ISO63 ISO80 ISO100
ISO160-250SWC304	304 S.S.	M10	35	23	ISO160 ISO200 ISO250
ISO320-500SWC304	304 S.S.	M12	50	30	ISO320 ISO400 ISO500
ISO63-100SWC-ZP	Steel+Zn Plated	M8	35	23	ISO63 ISO80 ISO100
ISO160-250SWC-ZP	Steel+Zn Plated	M10	35	23	ISO160 ISO200 ISO250
ISO320-500SWC-ZP	Steel+Zn Plated	M12	50	30	ISO320 ISO400 ISO500

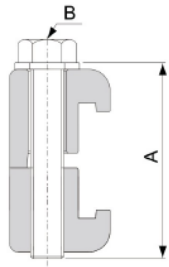
ISO SERIES

Single Wall Clamp 单边卡钳



型号 Model No.	材质 Material	A	B	C	适用法兰 Fit Flange
ISO63-100SWCA	Aluminum	M8	35	23.5	ISO63 ISO80 ISO100
ISO160-250SWCA	Aluminum	M10	35	23.5	ISO160 ISO200 ISO250
ISO320-500SWCA	Aluminum	M12	50	30	ISO320 ISO400 ISO500

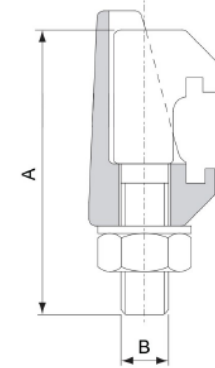
Double Wall Clamp 双边卡钳



型号 Model No.	材质 Material	A	B	最小值 Min. Quantity	适用法兰 Fit Flange
ISO63-100DWCA	Aluminum	45	M8	4	ISO63 ISO80 ISO100
ISO160-250DWCA	Aluminum	45	M10	4	ISO160 ISO200 ISO250
ISO320-500DWCA	Aluminum	60	M12	6	ISO320 ISO400 ISO500

ISO SERIES

Double Claw Clamp 双边钩型卡钳



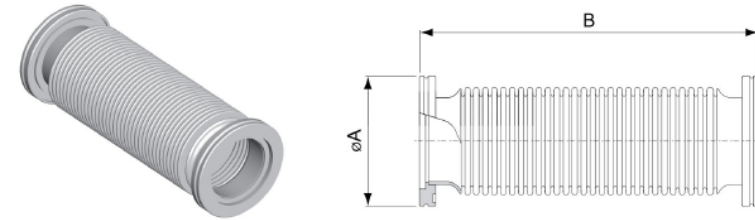
型号 Model No.	材质 Material	A	B	最小值 Min. Quantity	适用法兰 Fit Flange
ISO63-250DCC316	316 S.S.	61.5	M10	4	ISO63 ISO80 ISO100 ISO160 ISO200 ISO250
ISO320-500DCC316	316 S.S.	76	M12	8	ISO320 ISO400 ISO500
ISO630DCC316	316 S.S.	86	M12	12	ISO630
ISO63-250DCC-ZP	Steel+Zn Plated	61.5	M10	4	ISO63 ISO80 ISO100 ISO160 ISO200 ISO250
ISO320-500DCC-ZP	Steel+Zn Plated	76	M12	8	ISO320 ISO400 ISO500
ISO630DCC-ZP	Steel+Zn Plated	86	M12	12	ISO630

Cap 堵头



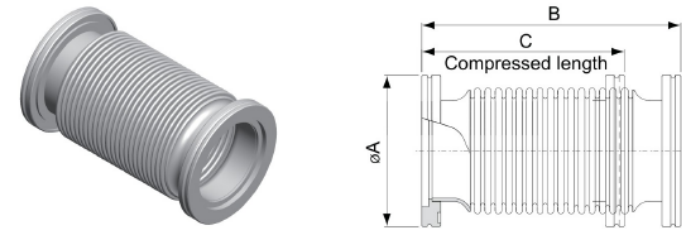
型号 Model No.	材质 Material	适用法兰 Fit Flange
ISO63CAP	Polyethylene	ISO63
ISO80CAP	Polyethylene	ISO80
ISO100CAP	Polyethylene	ISO100
ISO160CAP	Polyethylene	ISO160
ISO200CAP	Polyethylene	ISO200
ISO250CAP	Polyethylene	ISO250
ISO320CAP	Polyethylene	ISO320

ISO Flexible Hoses 波纹管



型号 Model No.	材质 Material	A	适用法兰 Fit Flange
ISO63FXC250	304 S.S.	95	250
ISO63FXC500	304 S.S.	95	500
ISO63FXC750	304 S.S.	95	750
ISO63FXC1000	304 S.S.	95	1000
ISO80FXC250	304 S.S.	110	250
ISO80FXC500	304 S.S.	110	500
ISO80FXC750	304 S.S.	110	750
ISO80FXC1000	304 S.S.	110	1000
ISO100FXC250	304 S.S.	130	250
ISO100FXC500	304 S.S.	130	500
ISO100FXC750	304 S.S.	130	750
ISO100FXC1000	304 S.S.	130	1000

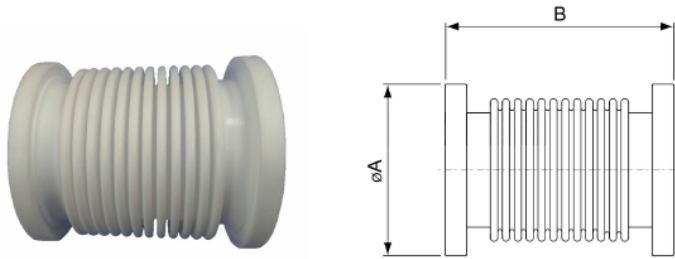
ISO Compressible Bellows Connections 波纹管



型号 Model No.	材质 Material	A	B	C
ISO63FXC140	304 S.S.	95	140	125
ISO80FXC187	304 S.S.	110	187	160
ISO100FXC187	304 S.S.	130	187	160

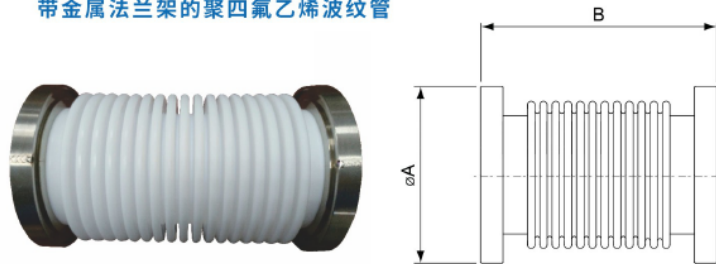
ISO SERIES

ISO Flexible Hoses 柔性软管 Teflon Bellows 聚四氟乙烯波纹管



型号 Model No.	材质 Material	A	B
ISO80FX150T	TEFLON	110	150

ISO Flexible Hoses 柔性软管 ISO Teflon bellows with Metal flange frame 带金属法兰架的聚四氟乙烯波纹管



型号 Model No.	材质 Material	A	B
ISO80FX180TS	TEFLON	110	180

ISO SERIES

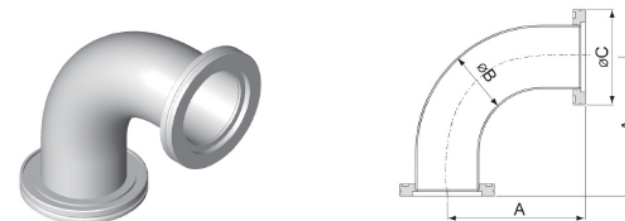
ISO Full Nipples ISO直管法兰



型号 Model No.	材质 Material	A	B	C
ISO63N100	304 S.S.	95	63.5	100
ISO80N100	304 S.S.	110	76.2	100
ISO100N100	304 S.S.	130	101.6	100
ISO160N100	304 S.S.	180	152.4	100
ISO200N100	304 S.S.	240	203.2	100
ISO250N100	304 S.S.	290	254	100
ISO320N200	304 S.S.	370	304.8	200
ISO400N200	304 S.S.	450	406.4	200
ISO500N200	304 S.S.	550	508	200

* Part number plus "K" for sand blasting surface * 零件编号加 "K" 用于喷砂表面
* Part number plus "L" for polished surface * 零件编号加 "L" 用于抛光表面

ISO 90° Elbows ISO 90°弯头

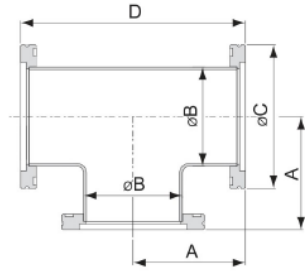


型号 Model No.	材质 Material	A	B	C
ISO63EL90A	304 S.S.	138.4	63.5	95
ISO80EL90A	304 S.S.	166.9	76.2	110
ISO100EL90A	304 S.S.	217.7	101.6	130
ISO160EL90A	304 S.S.	235.2	152.4	180

* Part number plus "K" for sand blasting surface * 零件编号加 "K" 用于喷砂表面
* Part number plus "L" for polished surface * 零件编号加 "L" 用于抛光表面

ISO SERIES

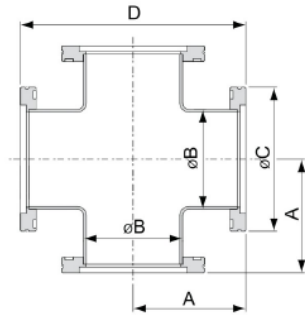
ISO Tees ISO 三通



型号 Model No.	材质 Material	A	B	C	D
ISO63TA	304 S.S.	82.8	63.5	95	165.6
ISO80TA	304 S.S.	89.15	76.2	110	178.3
ISO100TA	304 S.S.	105	101.6	130	210
ISO160TA	304 S.S.	133.6	152.4	180	267.2

* Part number plus "K" for sand blasting surface * 零件编号加 "K" 用于喷砂表面
 * Part number plus "L" for polished surface * 零件编号加 "L" 用于抛光表面

ISO 4-Way Crosses ISO 四通

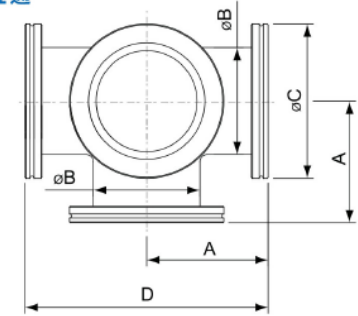


型号 Model No.	材质 Material	A	B	C	D
ISO63XA	304 S.S.	82.8	63.5	95	165.6
ISO80XA	304 S.S.	89.15	76.2	110	178.3
ISO100XA	304 S.S.	105	101.6	130	210
ISO160XA	304 S.S.	133.6	152.4	180	267.2

* Part number plus "K" for sand blasting surface * 零件编号加 "K" 用于喷砂表面
 * Part number plus "L" for polished surface * 零件编号加 "L" 用于抛光表面

ISO SERIES

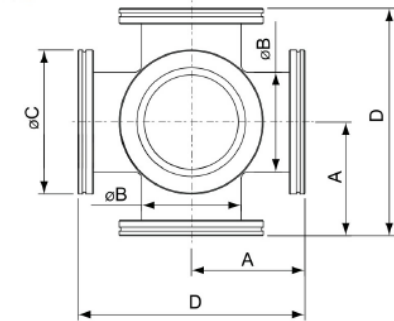
ISO Five-Way Crosses ISO 五通



型号 Model No.	材质 Material	A	B	C	D
ISO63FXA	304 S.S.	82.8	63.5	95	165.6
ISO80FXA	304 S.S.	89.15	76.2	110	178.3
ISO100FXA	304 S.S.	105	101.6	130	210
ISO160FXA	304 S.S.	133.6	152.4	180	267.2

* Part number plus "K" for sand blasting surface * 零件编号加 "K" 用于喷砂表面
 * Part number plus "L" for polished surface * 零件编号加 "L" 用于抛光表面

ISO Six-Way Crosses ISO 六通



型号 Model No.	材质 Material	A	B	C	D
ISO63SXA	304 S.S.	82.8	63.5	95	165.6
ISO80SXA	304 S.S.	89.15	76.2	110	178.3
ISO100SXA	304 S.S.	105	101.6	130	210
ISO160SXA	304 S.S.	133.6	152.4	180	267.2

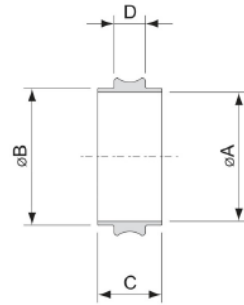
* Part number plus "K" for sand blasting surface * 零件编号加 "K" 用于喷砂表面
 * Part number plus "L" for polished surface * 零件编号加 "L" 用于抛光表面

ISO Centering Ring 中心支架

Available Area : Europe

C/R' with a notch

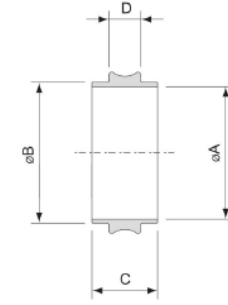
Special sizes available upon request



型号 Model No.	材质 Material	A	B	C	D
ISO63CRSE	304 S.S.	68	70	8	3.9
ISO80CRSE	304 S.S.	81	82.6	8	3.9
ISO100CRSE	304 S.S.	100	102	8	3.9
ISO160CRSE	304 S.S.	148	153	8	3.9
ISO200CRSE	304 S.S.	210	213	8	3.9
ISO250CRSE	304 S.S.	257.5	261	8	3.9
ISO320CRSE	304 S.S.	312	318	12	5.6
ISO400CRSE	304 S.S.	394	400	12	5.6
ISO500CRSE	304 S.S.	494	501	12	5.6
ISO630CRSE	304 S.S.	644.5	650.5	12	5.6
ISO63CRAE	Al	68	70	8	3.9
ISO80CRAE	Al	81	82.6	8	3.9
ISO100CRAE	Al	100	102	8	3.9
ISO160CRAE	Al	148	153	8	3.9
ISO200CRAE	Al	210	213	8	3.9
ISO250CRAE	Al	257.5	261	8	3.9
ISO320CRAE	Al	312	318	12	5.6
ISO400CRAE	Al	394	400	12	5.6
ISO500CRAE	Al	494	501	12	5.6
ISO630CRAE	Al	644.5	650.5	12	5.6

ISO Centering Ring 中心支架

Available Area : U.S.A.



型号 Model No.	材质 Material	A	B	C	D
ISO63CRSA	304 S.S.	67	69.6	8	3.9
ISO80CRSA	304 S.S.	80	82.6	8	3.9
ISO100CRSA	304 S.S.	99	101.6	8	3.9
ISO160CRSA	304 S.S.	150	152.6	8	3.9
ISO200CRSA	304 S.S.	210	212.6	8	3.9
ISO250CRSA	304 S.S.	257.5	260.4	8	3.9
ISO320CRSA	304 S.S.	312	317.3	12	5.6
ISO400CRSA	304 S.S.	394	399.2	12	5.6
ISO500CRSA	304 S.S.	494	500.2	12	5.6
ISO630CRSA	304 S.S.	644.5	650.5	12	5.6
ISO63CRAA	Al	67	69.6	8	3.9
ISO80CRAA	Al	80	82.6	8	3.9
ISO100CRAA	Al	99	101.6	8	3.9
ISO160CRAA	Al	150	152.6	8	3.9
ISO200CRAA	Al	210	212.6	8	3.9
ISO250CRAA	Al	257.5	260.4	8	3.9
ISO320CRAA	Al	312	317.3	12	5.6
ISO400CRAA	Al	394	399.2	12	5.6
ISO500CRAA	Al	494	500.2	12	5.6
ISO630CRAA	Al	644.5	650.5	12	5.6

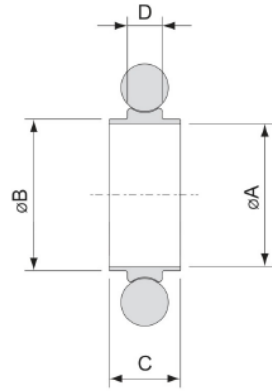
ISO SERIES

ISO Centering Ring with Viton O'Ring 中心支架

Available Area : Europe

C/R' with a notch

Special sizes available upon request



型号 Model No.	材质 Material C/R	O型圈材质 Material O'Ring	A	B	C	D	O型圈尺寸 O'Ring Size
ISO63CRVSE	304 S.S.	Viton(氟橡胶)	68	70	8	3.9	AS-337
ISO80CRVSE	304 S.S.	Viton(氟橡胶)	81	82.6	8	3.9	AS-341
ISO100CRVSE	304 S.S.	Viton(氟橡胶)	100	102	8	3.9	AS-347
ISO160CRVSE	304 S.S.	Viton(氟橡胶)	148	153	8	3.9	AS-362
ISO200CRVSE	304 S.S.	Viton(氟橡胶)	210	213	8	3.9	AS-371
ISO250CRVSE	304 S.S.	Viton(氟橡胶)	257.5	261	8	3.9	AS-378
ISO320CRVSE	304 S.S.	Viton(氟橡胶)	312	318	12	5.6	AS-454
ISO400CRVSE	304 S.S.	Viton(氟橡胶)	394	400	12	5.6	AS-461
ISO500CRVSE	304 S.S.	Viton(氟橡胶)	494	501	12	5.6	AS-469
ISO630CRVSE	304 S.S.	Viton(氟橡胶)	644.5	650.5	12	5.6	AS-475
ISO63CRVAE	Al	Viton(氟橡胶)	68	70	8	3.9	AS-337
ISO80CRVAE	Al	Viton(氟橡胶)	81	82.6	8	3.9	AS-341
ISO100CRVAE	Al	Viton(氟橡胶)	100	102	8	3.9	AS-347
ISO160CRVAE	Al	Viton(氟橡胶)	148	153	8	3.9	AS-362
ISO200CRVAE	Al	Viton(氟橡胶)	210	213	8	3.9	AS-371
ISO250CRVAE	Al	Viton(氟橡胶)	257.5	261	8	3.9	AS-378
ISO320CRVAE	Al	Viton(氟橡胶)	312	318	12	5.6	AS-454
ISO400CRVAE	Al	Viton(氟橡胶)	394	400	12	5.6	AS-461
ISO500CRVAE	Al	Viton(氟橡胶)	494	501	12	5.6	AS-469
ISO630CRVAE	Al	Viton(氟橡胶)	644.5	650.5	12	5.6	AS-475

The color of O'Ring is brown, black is available upon request

O型圈的颜色是棕色, 黑色可根据要求提供。

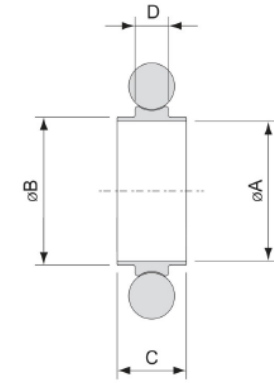
ISO SERIES

ISO Centering Ring with NBR O'Ring 中心支架

Available Area : Europe

C/R' with a notch

Special sizes available upon request



型号 Model No.	材质 Material C/R	O型圈材质 Material O'Ring	A	B	C	D	O型圈尺寸 O'Ring Size
ISO63CRNSE	304 S.S.	NBR(丁腈)	68	70	8	3.9	AS-337
ISO80CRNSE	304 S.S.	NBR(丁腈)	81	82.6	8	3.9	AS-341
ISO100CRNSE	304 S.S.	NBR(丁腈)	100	102	8	3.9	AS-347
ISO160CRNSE	304 S.S.	NBR(丁腈)	148	153	8	3.9	AS-362
ISO200CRNSE	304 S.S.	NBR(丁腈)	210	213	8	3.9	AS-371
ISO250CRNSE	304 S.S.	NBR(丁腈)	257.5	261	8	3.9	AS-378
ISO320CRNSE	304 S.S.	NBR(丁腈)	312	318	12	5.6	AS-454
ISO400CRNSE	304 S.S.	NBR(丁腈)	394	400	12	5.6	AS-461
ISO500CRNSE	304 S.S.	NBR(丁腈)	494	501	12	5.6	AS-469
ISO630CRNSE	304 S.S.	NBR(丁腈)	644.5	650.5	12	5.6	AS-475
ISO63CRNAE	Al	NBR(丁腈)	68	70	8	3.9	AS-337
ISO80CRNAE	Al	NBR(丁腈)	81	82.6	8	3.9	AS-341
ISO100CRNAE	Al	NBR(丁腈)	100	102	8	3.9	AS-347
ISO160CRNAE	Al	NBR(丁腈)	148	153	8	3.9	AS-362
ISO200CRNAE	Al	NBR(丁腈)	210	213	8	3.9	AS-371
ISO250CRNAE	Al	NBR(丁腈)	257.5	261	8	3.9	AS-378
ISO320CRNAE	Al	NBR(丁腈)	312	318	12	5.6	AS-454
ISO400CRNAE	Al	NBR(丁腈)	394	400	12	5.6	AS-461
ISO500CRNAE	Al	NBR(丁腈)	494	501	12	5.6	AS-469
ISO630CRNAE	Al	NBR(丁腈)	644.5	650.5	12	5.6	AS-475

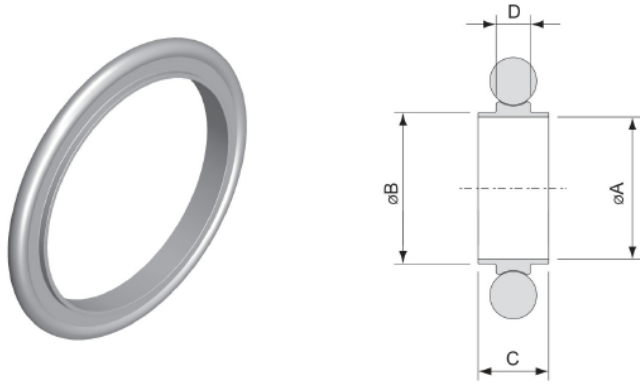
O'Ring color for NBR material is black, brown is available upon request

NBR材料的O型圈颜色为黑色, 可根据要求提供棕色。

ISO SERIES

ISO Centering Ring with Viton O'Ring 中心支架

Available Area: U.S.A.



型号 Model No.	材质 Material C/R	O型圈材质 Material O'Ring	A	B	C	D	O型圈尺寸 O'Ring Size
ISO63CRVSA	304 S.S.	Viton(氟橡胶)	67	69.6	8	3.9	AS-337
ISO80CRVSA	304 S.S.	Viton(氟橡胶)	80	82.6	8	3.9	AS-341
ISO100CRVSA	304 S.S.	Viton(氟橡胶)	99	101.6	8	3.9	AS-347
ISO160CRVSA	304 S.S.	Viton(氟橡胶)	150	152.6	8	3.9	AS-362
ISO200CRVSA	304 S.S.	Viton(氟橡胶)	210	212.6	8	3.9	AS-371
ISO250CRVSA	304 S.S.	Viton(氟橡胶)	257.5	260.4	8	3.9	AS-378
ISO320CRVSA	304 S.S.	Viton(氟橡胶)	312	317.3	12	5.6	AS-454
ISO400CRVSA	304 S.S.	Viton(氟橡胶)	394	399.2	12	5.6	AS-461
ISO500CRVSA	304 S.S.	Viton(氟橡胶)	494	500.2	12	5.6	AS-469
ISO630CRVSA	304 S.S.	Viton(氟橡胶)	644.5	650.5	12	5.6	AS-475
ISO63CRVAA	Al	Viton(氟橡胶)	67	69.6	8	3.9	AS-337
ISO80CRVAA	Al	Viton(氟橡胶)	80	82.6	8	3.9	AS-341
ISO100CRVAA	Al	Viton(氟橡胶)	99	101.6	8	3.9	AS-347
ISO160CRVAA	Al	Viton(氟橡胶)	150	152.6	8	3.9	AS-362
ISO200CRVAA	Al	Viton(氟橡胶)	210	212.6	8	3.9	AS-371
ISO250CRVAA	Al	Viton(氟橡胶)	257.5	260.4	8	3.9	AS-378
ISO320CRVAA	Al	Viton(氟橡胶)	312	317.3	12	5.6	AS-454
ISO400CRVAA	Al	Viton(氟橡胶)	394	399.2	12	5.6	AS-461
ISO500CRVAA	Al	Viton(氟橡胶)	494	500.2	12	5.6	AS-469
ISO630CRVAA	Al	Viton(氟橡胶)	644.5	650.5	12	5.6	AS-475

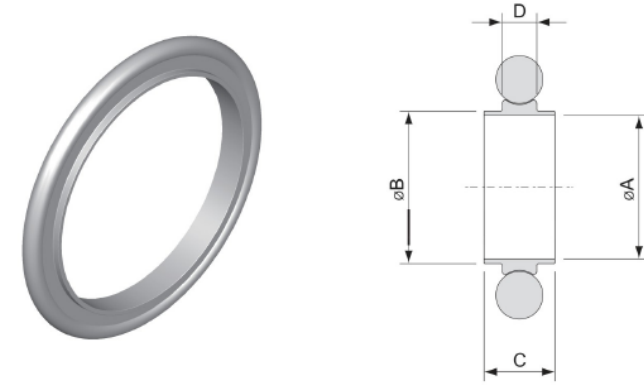
The color of O'Ring is brown, black is available upon request

O型圈的颜色是棕色, 黑色可根据要求提供。

ISO SERIES

ISO Centering Ring with NBR O'Ring 中心支架

Available Area: U.S.A.



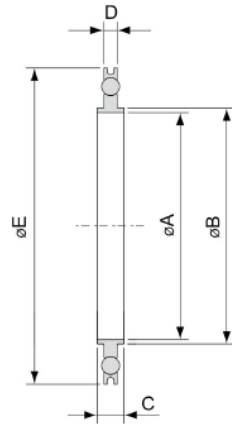
型号 Model No.	材质 Material C/R	O型圈材质 Material O'Ring	A	B	C	D	O型圈尺寸 O'Ring Size
ISO63CRNSA	304 S.S.	NBR(丁腈)	67	69.6	8	3.9	AS-337
ISO80CRNSA	304 S.S.	NBR(丁腈)	80	82.6	8	3.9	AS-341
ISO100CRNSA	304 S.S.	NBR(丁腈)	99	101.6	8	3.9	AS-347
ISO160CRNSA	304 S.S.	NBR(丁腈)	150	152.6	8	3.9	AS-362
ISO200CRNSA	304 S.S.	NBR(丁腈)	210	212.6	8	3.9	AS-371
ISO250CRNSA	304 S.S.	NBR(丁腈)	257.5	260.4	8	3.9	AS-378
ISO320CRNSA	304 S.S.	NBR(丁腈)	312	317.3	12	5.6	AS-454
ISO400CRNSA	304 S.S.	NBR(丁腈)	394	399.2	12	5.6	AS-461
ISO500CRNSA	304 S.S.	NBR(丁腈)	494	500.2	12	5.6	AS-469
ISO630CRNSA	304 S.S.	NBR(丁腈)	644.5	650.5	12	5.6	AS-475
ISO63CRNAA	Al	NBR(丁腈)	67	69.6	8	3.9	AS-337
ISO80CRNAA	Al	NBR(丁腈)	80	82.6	8	3.9	AS-341
ISO100CRNAA	Al	NBR(丁腈)	99	101.6	8	3.9	AS-347
ISO160CRNAA	Al	NBR(丁腈)	150	152.6	8	3.9	AS-362
ISO200CRNAA	Al	NBR(丁腈)	210	212.6	8	3.9	AS-371
ISO250CRNAA	Al	NBR(丁腈)	257.5	260.4	8	3.9	AS-378
ISO320CRNAA	Al	NBR(丁腈)	312	317.3	12	5.6	AS-454
ISO400CRNAA	Al	NBR(丁腈)	394	399.2	12	5.6	AS-461
ISO500CRNAA	Al	NBR(丁腈)	494	500.2	12	5.6	AS-469
ISO630CRNAA	Al	NBR(丁腈)	644.5	650.5	12	5.6	AS-475

O'Ring color for NBR material is black, brown is available upon request

NBR材料的O型圈颜色为黑色, 可根据要求提供棕色。

ISO Outer Ring Centering Ring & Viton O'Ring 中心支架

Available Area: Europe
C/R' with a notch
Special sizes available upon request

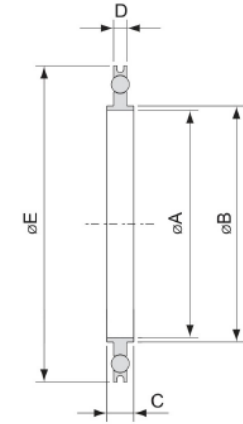


型号 Model No.	材质 Material C/R	O型圈材质 Material O'Ring	A	B	C	D	E	材质 Material O/R	O型圈尺寸 O'Ring Size
ISO630CRVSE	304 S.S.	Viton(氟橡胶)	68	70	8	3.9	94	Al	AS-337
ISO800CRVSE	304 S.S.	Viton(氟橡胶)	81	82.6	8	3.9	109	Al	AS-341
ISO1000CRVSE	304 S.S.	Viton(氟橡胶)	100	102	8	3.9	128	Al	AS-347
ISO1600CRVSE	304 S.S.	Viton(氟橡胶)	148	153	8	3.9	179	Al	AS-362
ISO2000CRVSE	304 S.S.	Viton(氟橡胶)	210	213	8	3.9	238	Al	AS-371
ISO2500CRVSE	304 S.S.	Viton(氟橡胶)	257.5	261	8	3.9	287	Al	AS-378
ISO3200CRVSE	304 S.S.	Viton(氟橡胶)	312	318	12	5.6	344	Al	AS-454
ISO4000CRVSE	304 S.S.	Viton(氟橡胶)	394	400	12	5.6	446	Al	AS-461
ISO5000CRVSE	304 S.S.	Viton(氟橡胶)	494	501	12	5.6	535	Al	AS-469
ISO6300CRVSE	304 S.S.	Viton(氟橡胶)	644.5	650.5	12	5.6	684.8	Al	AS-475
ISO630CRVAE	Al	Viton(氟橡胶)	68	70	8	3.9	94	Al	AS-337
ISO800CRVAE	Al	Viton(氟橡胶)	81	82.6	8	3.9	109	Al	AS-341
ISO1000CRVAE	Al	Viton(氟橡胶)	100	102	8	3.9	128	Al	AS-347
ISO1600CRVAE	Al	Viton(氟橡胶)	148	153	8	3.9	179	Al	AS-362
ISO2000CRVAE	Al	Viton(氟橡胶)	210	213	8	3.9	238	Al	AS-371
ISO2500CRVAE	Al	Viton(氟橡胶)	257.5	261	8	3.9	287	Al	AS-378
ISO3200CRVAE	Al	Viton(氟橡胶)	312	318	12	5.6	344	Al	AS-454
ISO4000CRVAE	Al	Viton(氟橡胶)	394	400	12	5.6	446	Al	AS-461
ISO5000CRVAE	Al	Viton(氟橡胶)	494	501	12	5.6	535	Al	AS-469
ISO6300CRVAE	Al	Viton(氟橡胶)	644.5	650.5	12	5.6	684.8	Al	AS-475

The color of O'Ring is brown, black is available upon request
O型圈的颜色是棕色, 黑色可根据要求提供。

ISO Outer Ring Centering Ring & NBR O'Ring 中心支架

Available Area: Europe
C/R' with a notch
Special sizes available upon request



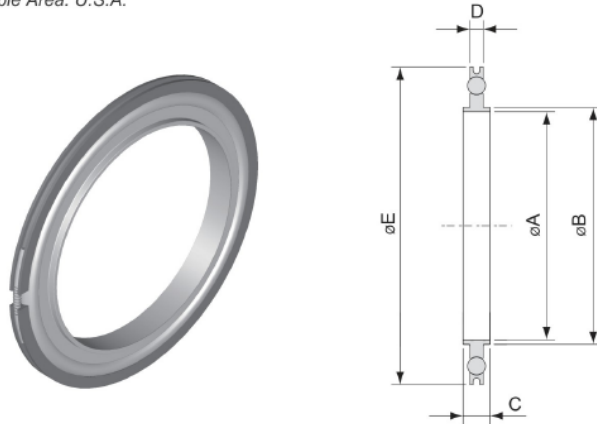
型号 Model No.	材质 Material C/R	O型圈材质 Material O'Ring	A	B	C	D	E	材质 Material O/R	O型圈尺寸 O'Ring Size
ISO630CRNSE	304 S.S.	NBR(丁腈)	68	70	8	3.9	94	Al	AS-337
ISO800CRNSE	304 S.S.	NBR(丁腈)	81	82.6	8	3.9	109	Al	AS-341
ISO1000CRNSE	304 S.S.	NBR(丁腈)	100	102	8	3.9	128	Al	AS-347
ISO1600CRNSE	304 S.S.	NBR(丁腈)	148	153	8	3.9	179	Al	AS-362
ISO2000CRNSE	304 S.S.	NBR(丁腈)	210	213	8	3.9	238	Al	AS-371
ISO2500CRNSE	304 S.S.	NBR(丁腈)	257.5	261	8	3.9	287	Al	AS-378
ISO3200CRNSE	304 S.S.	NBR(丁腈)	312	318	12	5.6	344	Al	AS-454
ISO4000CRNSE	304 S.S.	NBR(丁腈)	394	400	12	5.6	446	Al	AS-461
ISO5000CRNSE	304 S.S.	NBR(丁腈)	494	501	12	5.6	535	Al	AS-469
ISO6300CRNSE	304 S.S.	NBR(丁腈)	644.5	650.5	12	5.6	684.8	Al	AS-475
ISO630CRNAE	Al	NBR(丁腈)	68	70	8	3.9	94	Al	AS-337
ISO800CRNAE	Al	NBR(丁腈)	81	82.6	8	3.9	109	Al	AS-341
ISO1000CRNAE	Al	NBR(丁腈)	100	102	8	3.9	128	Al	AS-347
ISO1600CRNAE	Al	NBR(丁腈)	148	153	8	3.9	179	Al	AS-362
ISO2000CRNAE	Al	NBR(丁腈)	210	213	8	3.9	238	Al	AS-371
ISO2500CRNAE	Al	NBR(丁腈)	257.5	261	8	3.9	287	Al	AS-378
ISO3200CRNAE	Al	NBR(丁腈)	312	318	12	5.6	344	Al	AS-454
ISO4000CRNAE	Al	NBR(丁腈)	394	400	12	5.6	446	Al	AS-461
ISO5000CRNAE	Al	NBR(丁腈)	494	501	12	5.6	535	Al	AS-469
ISO6300CRNAE	Al	NBR(丁腈)	644.5	650.5	12	5.6	684.8	Al	AS-475

O'Ring color for NBR material is black, brown is available upon request
NBR材料的O型圈颜色为黑色, 可根据要求提供棕色。

ISO SERIES

ISO Outer Ring Centering Ring & Viton O'Ring 中心支架

Available Area: U.S.A.



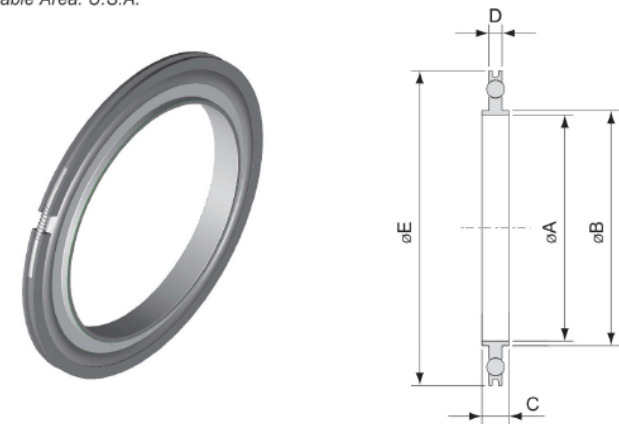
型号 Model No.	材质 Material C/R	O型圈材质 Material O'Ring	A	B	C	D	E	材质 Material O/R	O型圈尺寸 O'Ring Size
ISO630CRVSA	304 S.S.	Viton(氟橡胶)	67	69.6	8	3.9	94	AI	AS-337
ISO800CRVSA	304 S.S.	Viton(氟橡胶)	80	82.6	8	3.9	109	AI	AS-341
ISO1000CRVSA	304 S.S.	Viton(氟橡胶)	99	101.6	8	3.9	128	AI	AS-347
ISO1600CRVSA	304 S.S.	Viton(氟橡胶)	150	152.6	8	3.9	179	AI	AS-362
ISO2000CRVSA	304 S.S.	Viton(氟橡胶)	210	212.6	8	3.9	238	AI	AS-371
ISO2500CRVSA	304 S.S.	Viton(氟橡胶)	257.5	260.4	8	3.9	287	AI	AS-378
ISO3200CRVSA	304 S.S.	Viton(氟橡胶)	312	317.3	12	5.6	344	AI	AS-454
ISO4000CRVSA	304 S.S.	Viton(氟橡胶)	394	399.2	12	5.6	446	AI	AS-461
ISO5000CRVSA	304 S.S.	Viton(氟橡胶)	494	500.2	12	5.6	535	AI	AS-469
ISO6300CRVSA	304 S.S.	Viton(氟橡胶)	644.5	650.5	12	5.6	684.8	AI	AS-475
ISO630CRVAA	AI	Viton(氟橡胶)	67	69.6	8	3.9	94	AI	AS-337
ISO800CRVAA	AI	Viton(氟橡胶)	80	82.6	8	3.9	109	AI	AS-341
ISO1000CRVAA	AI	Viton(氟橡胶)	99	101.6	8	3.9	128	AI	AS-347
ISO1600CRVAA	AI	Viton(氟橡胶)	150	152.6	8	3.9	179	AI	AS-362
ISO2000CRVAA	AI	Viton(氟橡胶)	210	212.6	8	3.9	238	AI	AS-371
ISO2500CRVAA	AI	Viton(氟橡胶)	257.5	260.4	8	3.9	287	AI	AS-378
ISO3200CRVAA	AI	Viton(氟橡胶)	312	317.3	12	5.6	344	AI	AS-454
ISO4000CRVAA	AI	Viton(氟橡胶)	394	399.2	12	5.6	446	AI	AS-461
ISO5000CRVAA	AI	Viton(氟橡胶)	494	500.2	12	5.6	535	AI	AS-469
ISO6300CRVAA	AI	Viton(氟橡胶)	644.5	650.5	12	5.6	684.8	AI	AS-475

The color of O'Ring is brown, black is available upon request
O型圈的颜色是棕色, 黑色可根据要求提供。

ISO SERIES

ISO Outer Ring Centering Ring & NBR O'Ring 中心支架

Available Area: U.S.A.



型号 Model No.	材质 Material C/R	O型圈材质 Material O'Ring	A	B	C	D	E	材质 Material O/R	O型圈尺寸 O'Ring Size
ISO630CRNSA	304 S.S.	NBR(丁腈)	67	69.6	8	3.9	94	AI	AS-337
ISO800CRNSA	304 S.S.	NBR(丁腈)	80	82.6	8	3.9	109	AI	AS-341
ISO1000CRNSA	304 S.S.	NBR(丁腈)	99	101.6	8	3.9	128	AI	AS-347
ISO1600CRNSA	304 S.S.	NBR(丁腈)	150	152.6	8	3.9	179	AI	AS-362
ISO2000CRNSA	304 S.S.	NBR(丁腈)	210	212.6	8	3.9	238	AI	AS-371
ISO2500CRNSA	304 S.S.	NBR(丁腈)	257.5	260.4	8	3.9	287	AI	AS-378
ISO3200CRNSA	304 S.S.	NBR(丁腈)	312	317.3	12	5.6	344	AI	AS-454
ISO4000CRNSA	304 S.S.	NBR(丁腈)	394	399.2	12	5.6	446	AI	AS-461
ISO5000CRNSA	304 S.S.	NBR(丁腈)	494	500.2	12	5.6	535	AI	AS-469
ISO6300CRNSA	304 S.S.	NBR(丁腈)	644.5	650.5	12	5.6	684.8	AI	AS-475
ISO630CRNAA	AI	NBR(丁腈)	67	69.6	8	3.9	94	AI	AS-337
ISO800CRNAA	AI	NBR(丁腈)	80	82.6	8	3.9	109	AI	AS-341
ISO1000CRNAA	AI	NBR(丁腈)	99	101.6	8	3.9	128	AI	AS-347
ISO1600CRNAA	AI	NBR(丁腈)	150	152.6	8	3.9	179	AI	AS-362
ISO2000CRNAA	AI	NBR(丁腈)	210	212.6	8	3.9	238	AI	AS-371
ISO2500CRNAA	AI	NBR(丁腈)	257.5	260.4	8	3.9	287	AI	AS-378
ISO3200CRNAA	AI	NBR(丁腈)	312	317.3	12	5.6	344	AI	AS-454
ISO4000CRNAA	AI	NBR(丁腈)	394	399.2	12	5.6	446	AI	AS-461
ISO5000CRNAA	AI	NBR(丁腈)	494	500.2	12	5.6	535	AI	AS-469
ISO6300CRNAA	AI	NBR(丁腈)	644.5	650.5	12	5.6	684.8	AI	AS-475

O'Ring color for NBR material is black, brown is available upon request
NBR材料的O型圈颜色为黑色, 棕色可根据要求提供



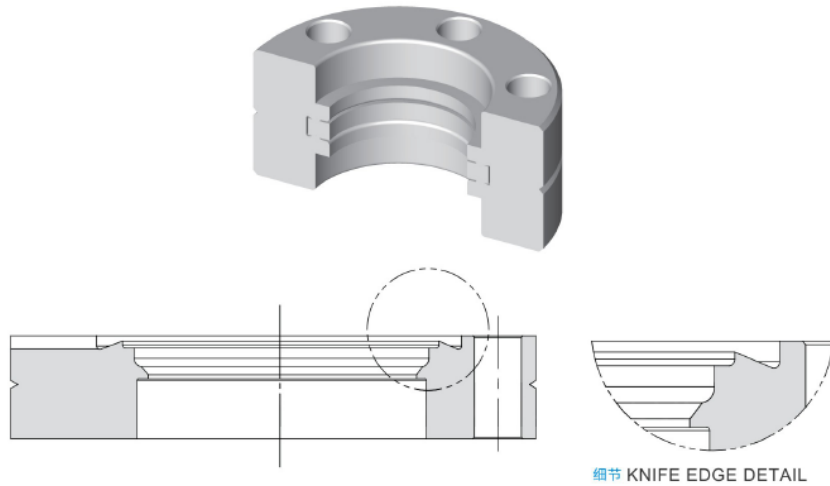
CF SERIES

CF系列



产品介绍

General Information



特色:

CF法兰连接的高密封效果和低泄漏率性能是垫片材料的结果。在组装CF法兰连接时,刀口被压入平坦的铜垫,并迫使密封材料在轴向和径向向外延伸至法兰。该材料是封闭的,即使在高烘烤温度下也不能流动。由于这种密封的变形,这种连接有时会粘在一起。用一个特殊的工具或螺丝刀可以很容易地将它们分开。

提供可旋转和不可旋转的版本,有通孔和攻丝螺栓孔。公制攻丝孔和非攻丝孔法兰是相同的产品。UNC或UNF或其他攻丝孔可作为特殊产品订购。

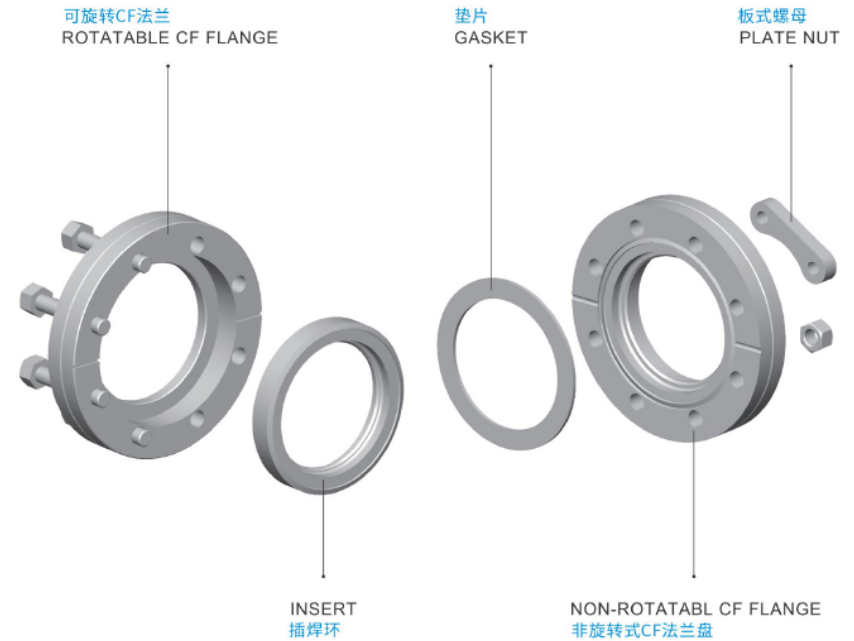
Features:

The high sealing effect and the low leak rates performance of CF flange connections is a result of gasket material. When assembling the CF flange connect, the knife edge is pressed into the flat copper gasket and force the seal material both axially as well as radially outwards to the flange. The material is enclosed and cannot flow even at high bakeout temperature. Due to this deformation of the seal such connections may sometimes stick together. They can be easily separated with a special tool or screwdriver.

Offered in both rotatable and nonrotatable versions with through holes and tapped bolt holes. Metric tapped holes and untapped holes flanges are identical products. UNC or UNF or other tapped holes can be ordered as specials.

产品介绍

General Information



规格:

盲板和法兰:304不锈钢(可根据要求提供其他材料)

垫片:无氧铜或氟橡胶

螺栓:304不锈钢。

温度范围:-200°C~450°C (OFHC Copper)

真空范围: $1 \cdot 10^{-13}$ mbar

额定扭矩: CF35及以下220 kgf·cm

CF63及以上360 kgf·cm

可根据要求提供更大或特殊尺寸

Specifications:

Blanks & Flanges : 304 S.S. (Other material available upon request)

Gaskets : OFHC Copper or Viton

Bolt : 304 S.S.

Temp. Range : -200°C ~ 450°C (OFHC Copper)

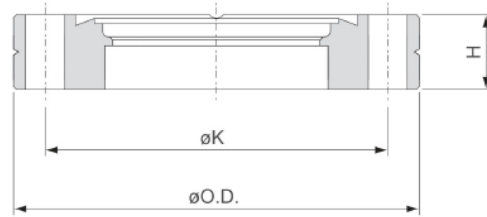
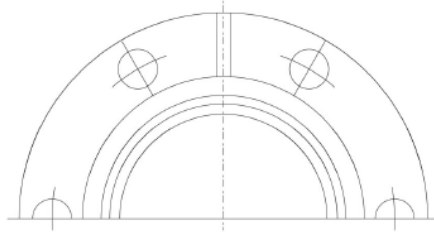
Vacuum Range : $1 \cdot 10^{-13}$ mbar

Torque Rating : CF35 and smaller 220 kgf·cm

CF63 and larger 360 kgf·cm

Larger or special size available upon request

Technical Data 技术参数



DN	CF	16	35	63	100	150	200	250	275	300-14"	300	350
Inch spec.	Inch	1-1/3"	2-3/4"	4-1/2"	6"	8"	10"	12"	13-1/4"	14"	14-1/2"	16-1/2"
Outside diameter O.D.	mm	33.8	69.5	113.6	151.6	202.5	253.2	304	336.6	355.6	368.3	419.1
Bolt circle diameter K	mm	26.9	58.7	92.1	130.3	181	231.8	284	306.3	325.5	338.1	388.9
Height H	mm	7.5	12.7	18	20	22	24.7	28.5	28.5	28.5	28.5	28.5
Number of holes	mm	6	6	8	16	20	24	32	30	30	32	36
Hole diameter	mm	4.4	6.7	8.4	8.4	8.4	8.4	8.4	10.3	10.3	10.3	10.3

CF组件的应用

Applications for CF Components

特色:

CF法兰连接由两个相同的法兰组成,带有无氧铜制成的平垫圈、螺栓、螺母。因为应用的是超高真空环境,所以安装前的准备工作是非常重要的。表面清洁可以保证最低的放气和泄漏率。

使用干净的无绒手套,将预先清洁过的无氧铜垫片放在刀口密封处,最好是最有可能固定和支持垫片掉落的法兰盘。在垫片就位的情况下,用所需的螺栓方向装上配套的法兰;如果法兰上有测漏槽,它们应该对准。

在法兰盘对准的情况下,插入适当尺寸的螺栓,并用手拧紧。对其余螺栓重复这一程序。用手拧紧所有螺栓后,支撑螺栓,用两把闭口扳手拧紧螺母。(螺母一侧使用垫圈)。

CF法兰适用于需要非常清洁的环境、超高真空条件、高温或必须控制或排除关键或危险材料的应用。

这包括:

- 1 具有腐蚀性的放射性、有毒或空气敏感材料的困难应用。
- 2 材料创造和加工,如分子束外延。
- 3 分析仪器,包括奥格电子能谱仪和电子显微镜。
- 4 高能物理装置,如加速器和聚变装置

Assembly:

The CF flange connection consists of two identical flanges with a flat gasket made of OFHC copper, bolts, nuts. Because the applications are UHV environments, so the preparation work is very important before installation. Surface cleaning guarantees the lowest possible outgassing and leak rates.

Using clean lint free gloves, place pre-cleaned OFHC copper gasket against knife edge seal, preferably the flange most likely to hold and support gasket from falling. With gasket in place fit mating flange with desired bolt orientation; if flanges are fitted with leak test grooves, they should aligned.

With flanges aligned, insert proper size bolt and hand tighten. Repeat this procedure with remaining bolts. After hand tightening all bolts, support bolt and tighten nut using two closed-end box wrenches. (washer are used on nut side)

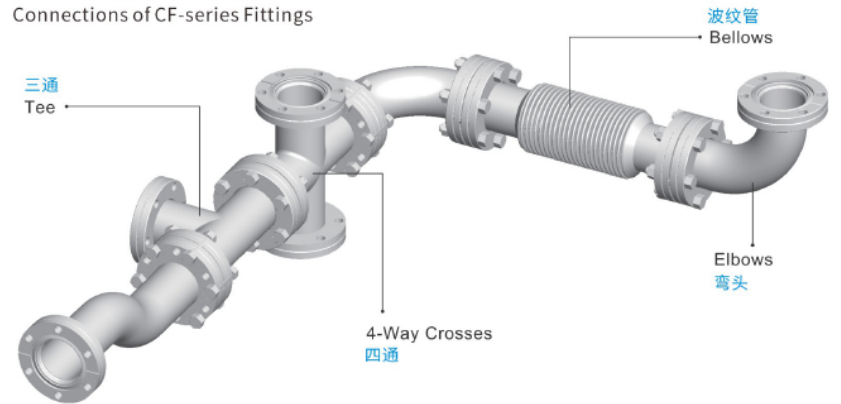
CF flanges are suited for use in applications requiring a very clean environment, ultrahigh vacuum conditions, high temperature or where critical or dangerous materials must be contained or excluded.

This include:

- 1 Difficult applications with corrosive radioactive, toxic or air sensitive materials.
- 2 Materials creation and processing such as molecular beam epitaxy.
- 3 Analytical instrumentation including Auger electron spectrometers and electron microscopes.
- 4 High energy physics installations such as accelerators and fusion devices

CF-系列接头的连接

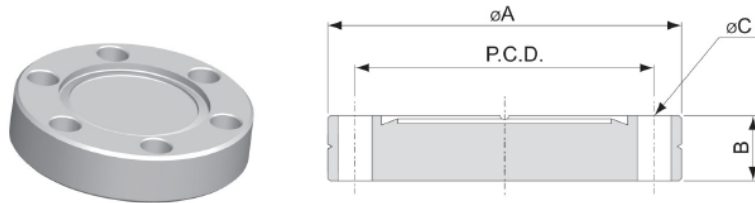
Connections of CF-series Fittings



CF SERIES

Blank 盲板法兰

Nonrotatable

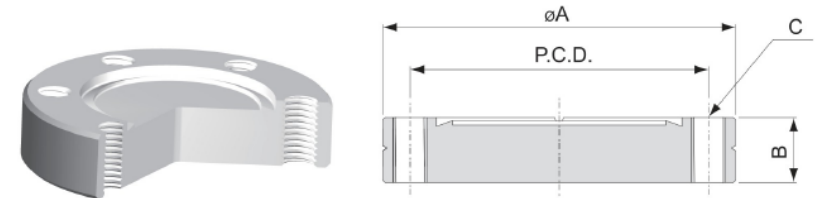


型号 Model No.	材质 Material	A	B	C*No.	P.C.D.
CF16B	304 S.S.	33.8	7.5	4.4*6	26.9
CF35B	304 S.S.	69.5	12.7	6.7*6	58.7
CF63B	304 S.S.	113.6	18	8.4*8	92.1
CF100B	304 S.S.	151.6	20	8.4*16	130.3
CF150B	304 S.S.	202.5	22	8.4*20	181
CF200B	304 S.S.	253.2	24.7	8.4*24	231.8
CF250B	304 S.S.	304	28.5	8.4*32	284
CF275B	304 S.S.	336.5	28.5	10.3*30	306.3
CF300B-14"	304 S.S.	355.6	28.5	10.3*30	325.5
CF300B	304 S.S.	368.3	28.5	10.3*32	338.1
CF350B	304 S.S.	419.1	28.5	10.3*36	388.9
CF16B-316	316 S.S.	33.8	7.5	4.4*6	26.9
CF35B-316	316 S.S.	69.5	12.7	6.7*6	58.7
CF63B-316	316 S.S.	113.6	18	8.4*8	92.1
CF100B-316	316 S.S.	151.6	20	8.4*16	130.3
CF150B-316	316 S.S.	202.5	22	8.4*20	181
CF200B-316	316 S.S.	253.2	24.7	8.4*24	231.8
CF250B-316	316 S.S.	304	28.5	8.4*32	284
CF275B-316	316 S.S.	336.5	28.5	10.3*30	306.3
CF300B-14"-316	316 S.S.	355.6	28.5	10.3*30	325.5
CF300B-316	316 S.S.	368.3	28.5	10.3*32	338.1
CF350B-316	316 S.S.	419.1	28.5	10.3*36	388.9

CF SERIES

Blank 盲板法兰(带螺纹)

Nonrotatable-Tapped Bolt Holes

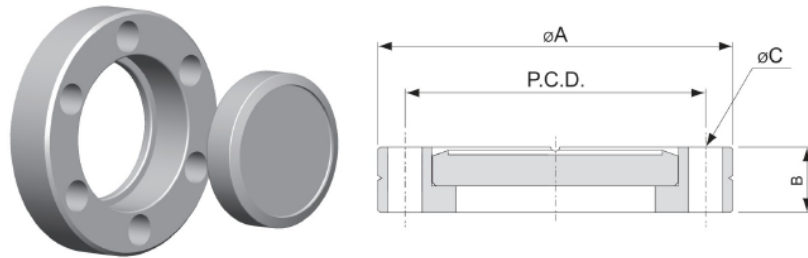


型号 Model No.	材质 Material	A	B	C*No.	P.C.D.
CF16BTAP	304 S.S.	33.8	7.5	M4*6	26.9
CF35BTAP	304 S.S.	69.5	12.7	M6*6	58.7
CF63BTAP	304 S.S.	113.6	18	M8*8	92.1
CF100BTAP	304 S.S.	151.6	20	M8*16	130.3
CF150BTAP	304 S.S.	202.5	22	M8*20	181
CF200BTAP	304 S.S.	253.2	24.7	M8*24	231.8
CF250BTAP	304 S.S.	304	28.5	M8*32	284
CF275BTAP	304 S.S.	336.5	28.5	M10*30	306.3
CF300BTAP-14"	304 S.S.	355.6	28.5	M10*30	325.5
CF300BTAP	304 S.S.	368.3	28.5	M10*32	338.1
CF350BTAP	304 S.S.	419.1	28.5	M10*36	388.9
CF16BTAP-316	316 S.S.	33.8	7.5	M4*6	26.9
CF35BTAP-316	316 S.S.	69.5	12.7	M6*6	58.7
CF63BTAP-316	316 S.S.	113.6	18	M8*8	92.1
CF100BTAP-316	316 S.S.	151.6	20	M8*16	130.3
CF150BTAP-316	316 S.S.	202.5	22	M8*20	181
CF200BTAP-316	316 S.S.	253.2	24.7	M8*24	231.8
CF250BTAP-316	316 S.S.	304	28.5	M8*32	284
CF275BTAP-316	316 S.S.	336.5	28.5	M10*30	306.3
CF300BTAP-14"-316	316 S.S.	355.6	28.5	M10*30	325.5
CF300BTAP-316	316 S.S.	368.3	28.5	M10*32	338.1
CF350BTAP-316	316 S.S.	419.1	28.5	M10*36	388.9

CF SERIES

Blank 活套盲板法兰

Rotatable

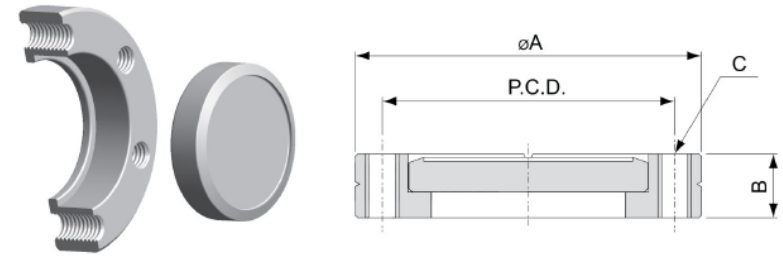


型号 Model No.	材质 Material	A	B	C*No.	P.C.D.
CR16B	304 S.S.	33.8	7.5	4.4*6	26.9
CR35B	304 S.S.	69.5	12.7	6.7*6	58.7
CR63B	304 S.S.	113.6	19	8.4*8	92.1
CR100B	304 S.S.	151.6	21.5	8.4*16	130.3
CR150B	304 S.S.	202.5	24	8.4*20	181
CR200B	304 S.S.	253.2	24.7	8.4*24	231.8
CR250B	304 S.S.	304	28.5	8.4*32	284
CR275B	304 S.S.	336.5	28.5	10.3*30	306.3
CR300B-14"	304 S.S.	355.6	28.5	10.3*30	325.5
CR300B	304 S.S.	368.3	28.5	10.3*32	338.1
CR350B	304 S.S.	419.1	28.5	10.3*36	388.9
CR16B-316	316 S.S.	33.8	7.5	4.4*6	26.9
CR35B-316	316 S.S.	69.5	12.7	6.7*6	58.7
CR63B-316	316 S.S.	113.6	19	8.4*8	92.1
CR100B-316	316 S.S.	151.6	21.5	8.4*16	130.3
CR150B-316	316 S.S.	202.5	24	8.4*20	181
CR200B-316	316 S.S.	253.2	24.7	8.4*24	231.8
CR250B-316	316 S.S.	304	28.5	8.4*32	284
CR275B-316	316 S.S.	336.5	28.5	10.3*30	306.3
CR300B-14"-316	316 S.S.	355.6	28.5	10.3*30	325.5
CR300B-316	316 S.S.	368.3	28.5	10.3*32	338.1
CR350B-316	316 S.S.	419.1	28.5	10.3*36	388.9

CF SERIES

Blank 活套盲板法兰(带螺纹)

Rotatable-Tapped Bolt Holes

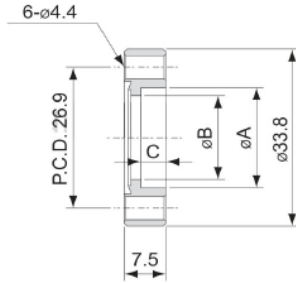


型号 Model No.	材质 Material	A	B	C*No.	P.C.D.
CR16BTAP	304 S.S.	33.8	7.5	M4*6	26.9
CR35BTAP	304 S.S.	69.5	12.7	M6*6	58.7
CR63BTAP	304 S.S.	113.6	19	M8*8	92.1
CR100BTAP	304 S.S.	151.6	21.5	M8*16	130.3
CR150BTAP	304 S.S.	202.5	24	M8*20	181
CR200BTAP	304 S.S.	253.2	24.7	M8*24	231.8
CR250BTAP	304 S.S.	304	28.5	M8*32	284
CR275BTAP	304 S.S.	336.5	28.5	M10*30	306.3
CR300BTAP-14"	304 S.S.	355.6	28.5	M10*30	325.5
CR300BTAP	304 S.S.	368.3	28.5	M10*32	338.1
CR350BTAP	304 S.S.	419.1	28.5	M10*36	388.9
CR16BTAP-316	316 S.S.	33.8	7.5	M4*6	26.9
CR35BTAP-316	316 S.S.	69.5	12.7	M6*6	58.7
CR63BTAP-316	316 S.S.	113.6	19	M8*8	92.1
CR100BTAP-316	316 S.S.	151.6	21.5	M8*16	130.3
CR150BTAP-316	316 S.S.	202.5	24	M8*20	181
CR200BTAP-316	316 S.S.	253.2	24.7	M8*24	231.8
CR250BTAP-316	316 S.S.	304	28.5	M8*32	284
CR275BTAP-316	316 S.S.	336.5	28.5	M10*30	306.3
CR300BTAP-14"-316	316 S.S.	355.6	28.5	M10*30	325.5
CR300BTAP-316	316 S.S.	368.3	28.5	M10*32	338.1
CR350BTAP-316	316 S.S.	419.1	28.5	M10*36	388.9

CF SERIES

☞ Bored Blank 固定法兰

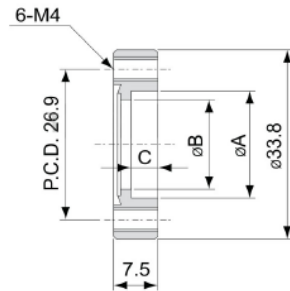
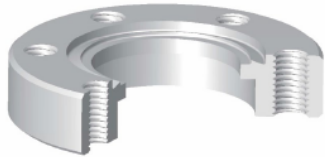
Nonrotatable



型号 Model No.	材质 Material	英寸规格 Inch spec.	A	B	C
CF16B7	304 S.S.	1-1/3"	6.5	5.5	5.3
CF16B12	304 S.S.	1-1/3"	12.9	10.4	4.5
CF16B19	304 S.S.	1-1/3"	19.15	16	4.5
CF16B7-316	316 S.S.	1-1/3"	6.5	5.5	5.3
CF16B12-316	316 S.S.	1-1/3"	12.9	10.4	4.5
CF16B19-316	316 S.S.	1-1/3"	19.15	16	4.5

☞ Bored Blank 固定法兰(带螺纹)

Nonrotatable-Tapped Bolt Holes

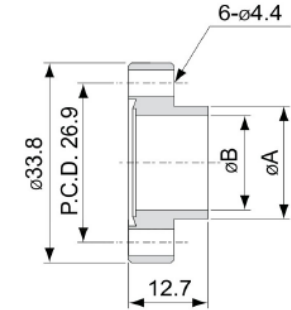


型号 Model No.	材质 Material	英寸规格 Inch spec.	A	B	C
CF16B7TAP	304 S.S.	1-1/3"	6.5	5.5	5.3
CF16B12TAP	304 S.S.	1-1/3"	12.9	10.4	4.5
CF16B19TAP	304 S.S.	1-1/3"	19.15	16	4.5
CF16B7TAP-316	316 S.S.	1-1/3"	6.5	5.5	5.3
CF16B12TAP-316	316 S.S.	1-1/3"	12.9	10.4	4.5
CF16B19TAP-316	316 S.S.	1-1/3"	19.15	16	4.5

CF SERIES

☞ Bored Blank-Neck 焊接法兰

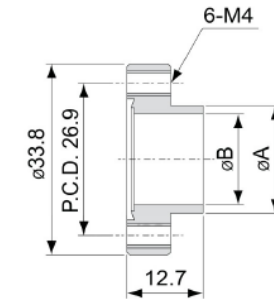
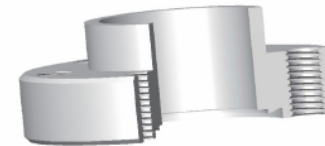
Nonrotatable



型号 Model No.	材质 Material	英寸规格 Inch spec.	A	B
CF16B7N	304 S.S.	1-1/3"	6.35	4.5
CF16B12N	304 S.S.	1-1/3"	12.7	9.5
CF16B19N	304 S.S.	1-1/3"	19.05	16
CF16B7N-316	316 S.S.	1-1/3"	6.35	4.5
CF16B12N-316	316 S.S.	1-1/3"	12.7	9.5
CF16B19N-316	316 S.S.	1-1/3"	19.05	16

☞ Bored Blank-Neck 焊接法兰(带螺纹)

Nonrotatable-Tapped Bolt Holes

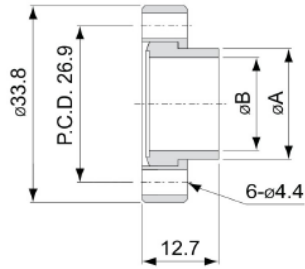
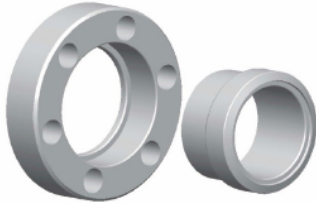


型号 Model No.	材质 Material	英寸规格 Inch spec.	A	B
CF16B7TAPN	304 S.S.	1-1/3"	6.35	4.5
CF16B12TAPN	304 S.S.	1-1/3"	12.7	9.5
CF16B19TAPN	304 S.S.	1-1/3"	19.05	16
CF16B7TAPN-316	316 S.S.	1-1/3"	6.35	4.5
CF16B12TAPN-316	316 S.S.	1-1/3"	12.7	9.5
CF16B19TAPN-316	316 S.S.	1-1/3"	19.05	16

CF SERIES

☞ Bored Blank-Neck 活套焊接法兰

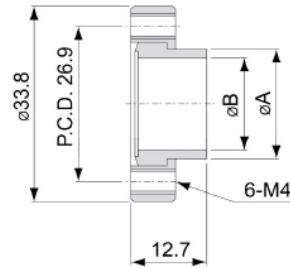
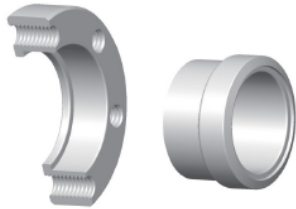
Rotatable



型号 Model No.	材质 Material	英制规格 Inch spec.	A	B
CR16B7N	304 S.S.	1-1/3"	6.35	4.5
CR16B12N	304 S.S.	1-1/3"	12.7	9.5
CR16B19N	304 S.S.	1-1/3"	19.05	16
CR16B7N-316	316 S.S.	1-1/3"	6.35	4.5
CR16B12N-316	316 S.S.	1-1/3"	12.7	9.5
CR16B19N-316	316 S.S.	1-1/3"	19.05	16

☞ Bored Blank-Neck 活套焊接法兰(带螺纹)

Rotatable-Tapped Bolt Holes

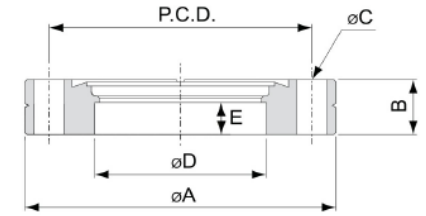


型号 Model No.	材质 Material	英制规格 Inch spec.	A	B
CR16B7TAPN	304 S.S.	1-1/3"	6.35	4.5
CR16B12TAPN	304 S.S.	1-1/3"	12.7	9.5
CR16B19TAPN	304 S.S.	1-1/3"	19.05	16
CR16B7TAPN-316	316 S.S.	1-1/3"	6.35	4.5
CR16B12TAPN-316	316 S.S.	1-1/3"	12.7	9.5
CR16B19TAPN-316	316 S.S.	1-1/3"	19.05	16

CF SERIES

☞ Bored Flange 固定法兰

Nonrotatable

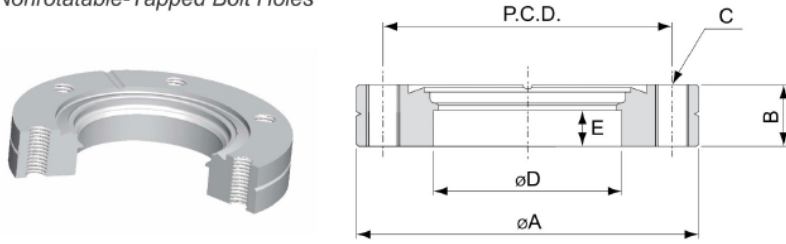


型号 Model No.	材质 Material	A	B	C*No.	D	E	P.C.D.
CF35B25	304 S.S.	69.5	12.7	6.7*6	25.6	7.4	58.7
CF35B38	304 S.S.	69.5	12.7	6.7*6	38.3	7.4	58.7
CF35B42	304 S.S.	69.5	12.7	6.7*6	42.9	7.4	58.7
CF63B51	304 S.S.	113.6	18	8.4*8	51.1	8.5	92.1
CF63B63	304 S.S.	113.6	18	8.4*8	63.7	8.5	92.1
CF100B102	304 S.S.	151.6	20	8.4*16	102.2	8.9	130.3
CF150B153	304 S.S.	202.5	22	8.4*20	153.1	9.3	181
CF200B204	304 S.S.	253.2	24.7	8.4*24	203.7	12	231.8
CF250B255	304 S.S.	304	28.5	8.4*32	255	15.8	284
CF275B255	304 S.S.	336.5	28.5	10.3*30	255	15.8	306.3
CF300B305-14"	304 S.S.	355.6	28.5	10.3*30	305.3	15.8	325.5
CF300B305	304 S.S.	368.3	28.5	10.3*32	305.3	15.8	338.1
CR350B356	304 S.S.	419.1	28.5	10.3*36	356.1	15.8	388.9
CF35B25-316	316 S.S.	69.5	12.7	6.7*6	25.6	7.4	58.7
CF35B38-316	316 S.S.	69.5	12.7	6.7*6	38.3	7.4	58.7
CF35B42-316	316 S.S.	69.5	12.7	6.7*6	42.9	7.4	58.7
CF63B51-316	316 S.S.	113.6	18	8.4*8	51.1	8.5	92.1
CF63B63-316	316 S.S.	113.6	18	8.4*8	63.7	8.5	92.1
CF100B102-316	316 S.S.	151.6	20	8.4*16	102.2	8.9	130.3
CF150B153-316	316 S.S.	202.5	22	8.4*20	153.1	9.3	181
CF200B204-316	316 S.S.	253.2	24.7	8.4*24	203.7	12	231.8
CF250B255-316	316 S.S.	304	28.5	8.4*32	255	15.8	284
CF275B255-316	316 S.S.	336.5	28.5	10.3*30	255	15.8	306.3
CF300B305-14"-316	316 S.S.	355.6	28.5	10.3*30	305.3	15.8	325.5
CF300B305-316	316 S.S.	368.3	28.5	10.3*32	305.3	15.8	338.1
CF350B356-316	316 S.S.	419.1	28.5	10.3*36	356.1	15.8	388.9

CF SERIES

☞ Bored Flange 固定法兰(带螺纹)

Nonrotatable-Tapped Bolt Holes

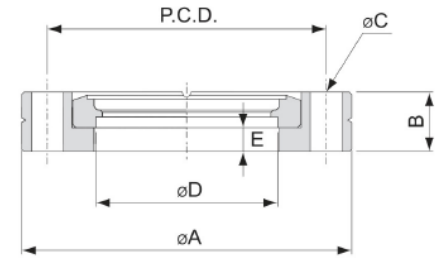


型号 Model No.	材质 Material	A	B	C*No.	D	E	P.C.D.
CF35B25TAP	304 S.S.	69.5	12.7	M6*6	25.6	7.4	58.7
CF35B38TAP	304 S.S.	69.5	12.7	M6*6	38.3	7.4	58.7
CF35B42TAP	304 S.S.	69.5	12.7	M6*6	42.9	7.4	58.7
CF63B51TAP	304 S.S.	113.6	18	M8*8	51.1	8.5	92.1
CF63B63TAP	304 S.S.	113.6	18	M8*8	63.7	8.5	92.1
CF100B102TAP	304 S.S.	151.6	20	M8*16	102.2	8.9	130.3
CF150B153TAP	304 S.S.	202.5	22	M8*20	153.1	9.3	181
CF200B204TAP	304 S.S.	253.2	24.7	M8*24	203.7	12	231.8
CF250B255TAP	304 S.S.	304	28.5	M8*32	255	15.8	284
CF275B255TAP	304 S.S.	336.5	28.5	M10*30	255	15.8	306.3
CF300B305TAP-14"	304 S.S.	355.6	28.5	M10*30	305.3	15.8	325.5
CF300B305TAP	304 S.S.	368.3	28.5	M10*32	305.3	15.8	338.1
CF350B356TAP	304 S.S.	419.1	28.5	M10*36	356.1	15.8	388.9
CF35B25TAP-316	316 S.S.	69.5	12.7	M6*6	25.6	7.4	58.7
CF35B38TAP-316	316 S.S.	69.5	12.7	M6*6	38.3	7.4	58.7
CF35B42TAP-316	316 S.S.	69.5	12.7	M6*6	42.9	7.4	58.7
CF63B51TAP-316	316 S.S.	113.6	18	M8*8	51.1	8.5	92.1
CF63B63TAP-316	316 S.S.	113.6	18	M8*8	63.7	8.5	92.1
CF100B102TAP-316	316 S.S.	151.6	20	M8*16	102.2	8.9	130.3
CF150B153TAP-316	316 S.S.	202.5	22	M8*20	153.1	9.3	181
CF200B204TAP-316	316 S.S.	253.2	24.7	M8*24	203.7	12	231.8
CF250B255TAP-316	316 S.S.	304	28.5	M8*32	255	15.8	284
CF275B255TAP-316	316 S.S.	336.5	28.5	M10*30	255	15.8	306.3
CF300B305TAP-14"-316	316 S.S.	355.6	28.5	M10*30	305.3	15.8	325.5
CF300B305TAP-316	316 S.S.	368.3	28.5	M10*32	305.3	15.8	338.1
CF350B356TAP-316	316 S.S.	419.1	28.5	M10*36	356.1	15.8	388.9

CF SERIES

☞ Bored Flange 活套法兰

Rotatable

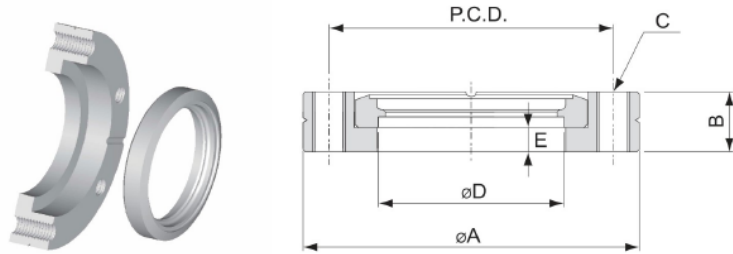


型号 Model No.	材质 Material	A	B	C*No.	D	E	P.C.D.
CR35B25	304 S.S.	69.5	12.7	6.7*6	25.6	5.1	58.7
CR35B38	304 S.S.	69.5	12.7	6.7*6	38.3	5.1	58.7
CR35B42	304 S.S.	69.5	12.7	6.7*6	42.9	5.1	58.7
CR63B51	304 S.S.	113.6	19	8.4*8	51.1	6.3	92.1
CR63B63	304 S.S.	113.6	19	8.4*8	63.7	6.3	92.1
CR100B102	304 S.S.	151.6	21.5	8.4*16	102.2	7.2	130.3
CR150B153	304 S.S.	202.5	24	8.4*20	153.1	8.2	181
CR200B204	304 S.S.	253.2	24.7	8.4*24	203.7	7.5	231.8
CR250B255	304 S.S.	304	28.5	8.4*32	255	8.8	284
CR275B255	304 S.S.	336.5	28.5	10.3*30	255	8.8	306.3
CR300B305-14"	304 S.S.	355.6	28.5	10.3*30	305.3	8.8	325.5
CR300B305	304 S.S.	368.3	28.5	10.3*32	305.3	8.8	338.1
CR350B356	304 S.S.	419.1	28.5	10.3*36	356.1	8.8	388.9
CR35B25-316	316 S.S.	69.5	12.7	6.7*6	25.6	5.1	58.7
CR35B38-316	316 S.S.	69.5	12.7	6.7*6	38.3	5.1	58.7
CR35B42-316	316 S.S.	69.5	12.7	6.7*6	42.9	5.1	58.7
CR63B51-316	316 S.S.	113.6	19	8.4*8	51.1	6.3	92.1
CR63B63-316	316 S.S.	113.6	19	8.4*8	63.7	6.3	92.1
CR100B102-316	316 S.S.	151.6	21.5	8.4*16	102.2	7.2	130.3
CR150B153-316	316 S.S.	202.5	24	8.4*20	153.1	8.2	181
CR200B204-316	316 S.S.	253.2	24.7	8.4*24	203.7	7.5	231.8
CR250B255-316	316 S.S.	304	28.5	8.4*32	255	8.8	284
CR275B255-316	316 S.S.	336.5	28.5	10.3*30	255	8.8	306.3
CR300B305-14"-316	316 S.S.	355.6	28.5	10.3*30	305.3	8.8	325.5
CR300B305-316	316 S.S.	368.3	28.5	10.3*32	305.3	8.8	338.1
CR350B356-316	316 S.S.	419.1	28.5	10.3*36	356.1	8.8	388.9

CF SERIES

☞ Bored Flange 活套法兰(带螺纹)

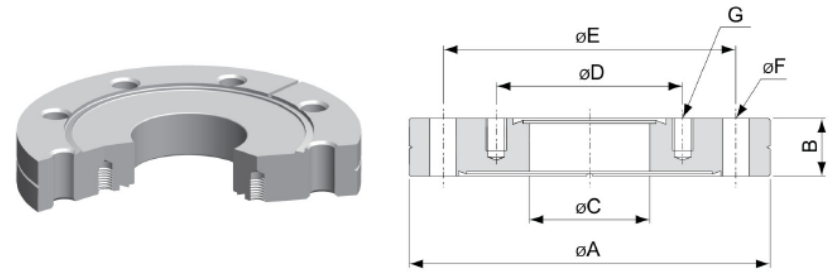
Rotatable-Tapped Bolt Holes



型号 Model No.	材质 Material	A	B	C*No.	D	E	P.C.D.
CR35B25TAP	304 S.S.	69.5	12.7	M6*6	25.6	5.1	58.7
CR35B38TAP	304 S.S.	69.5	12.7	M6*6	38.3	5.1	58.7
CR35B42TAP	304 S.S.	69.5	12.7	M6*6	42.9	5.1	58.7
CR63B51TAP	304 S.S.	113.6	19	M8*8	51.1	6.3	92.1
CR63B63TAP	304 S.S.	113.6	19	M8*8	63.7	6.3	92.1
CR100B102TAP	304 S.S.	151.6	21.5	M8*16	102.2	7.2	130.3
CR150B153TAP	304 S.S.	202.5	24	M8*20	153.1	8.2	181
CR200B204TAP	304 S.S.	253.2	24.7	M8*24	203.7	7.5	231.8
CR250B255TAP	304 S.S.	304	28.5	M8*32	255	8.8	284
CR275B255TAP	304 S.S.	336.5	28.5	M10*30	255	8.8	306.3
CR300B305TAP-14"	304 S.S.	355.6	28.5	M10*30	305.3	8.8	325.5
CR300B305TAP	304 S.S.	368.3	28.5	M10*32	305.3	8.8	338.1
CR350B356TAP	304 S.S.	419.1	28.5	M10*36	356.1	8.8	388.9
CR35B25TAP-316	316 S.S.	69.5	12.7	M6*6	25.6	5.1	58.7
CR35B38TAP-316	316 S.S.	69.5	12.7	M6*6	38.3	5.1	58.7
CR35B42TAP-316	316 S.S.	69.5	12.7	M6*6	42.9	5.1	58.7
CR63B51TAP-316	316 S.S.	113.6	19	M8*8	51.1	6.3	92.1
CR63B63TAP-316	316 S.S.	113.6	19	M8*8	63.7	6.3	92.1
CR100B102TAP-316	316 S.S.	151.6	21.5	M8*16	102.2	7.2	130.3
CR150B153TAP-316	316 S.S.	202.5	24	M8*20	153.1	8.2	181
CR200B204TAP-316	316 S.S.	253.2	24.7	M8*24	203.7	7.5	231.8
CR250B255TAP-316	316 S.S.	304	28.5	M8*32	255	8.8	284
CR275B255TAP-316	316 S.S.	336.5	28.5	M10*30	255	8.8	306.3
CR300B305TAP-14"-316	316 S.S.	355.6	28.5	M10*30	305.3	8.8	325.5
CR300B305TAP-316	316 S.S.	368.3	28.5	M10*32	305.3	8.8	338.1
CR350B356TAP-316	316 S.S.	419.1	28.5	M10*36	356.1	8.8	388.9

CF SERIES

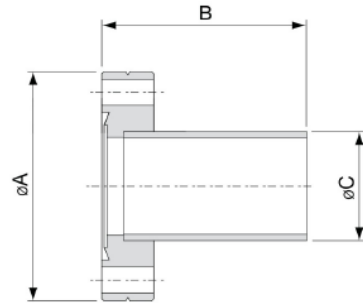
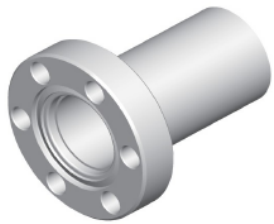
☞ Reducing Flange 变径法兰



型号 Model No.	材质 Material	A	B	C	D	E	F*No.	G*No.	螺纹深度 Thread Depth
CF35RF16	304 S.S.	69.5	12.7	15.8	26.9	58.7	6.7*6	M4*6	7
CF63RF16	304 S.S.	113.6	18	15.8	26.9	92.1	8.4*8	M4*6	10
CF63RF35	304 S.S.	113.6	18	38.1	58.7	92.1	8.4*8	M6*6	10
CF100RF35	304 S.S.	151.6	20	38.1	58.7	130.3	8.4*16	M6*6	12
CF100RF63	304 S.S.	151.6	20	63.5	92.1	130.3	8.4*16	M8*8	12
CF150RF35	304 S.S.	202.5	22	38.1	58.7	181	8.4*20	M6*6	12
CF150RF63	304 S.S.	202.5	22	63.5	92.1	181	8.4*20	M8*8	14
CF150RF100	304 S.S.	202.5	22	101.6	130.3	181	8.4*20	M8*16	14
CF200RF35	304 S.S.	253.2	24.7	38.1	58.7	231.8	8.4*24	M6*6	12
CF200RF63	304 S.S.	253.2	24.7	63.5	92.1	231.8	8.4*24	M8*8	15
CF200RF100	304 S.S.	253.2	24.7	101.6	130.3	231.8	8.4*24	M8*16	15
CF200RF150	304 S.S.	253.2	24.7	152.4	181	231.8	8.4*24	M8*20	15
CF275RF35	304 S.S.	336.5	28.5	38.1	58.7	306.3	10.3*30	M6*6	12
CF275RF63	304 S.S.	336.5	28.5	63.5	92.1	306.3	10.3*30	M8*8	15
CF275RF100	304 S.S.	336.5	28.5	101.6	130.3	306.3	10.3*30	M8*16	15
CF275RF150	304 S.S.	336.5	28.5	152.4	181	306.3	10.3*30	M8*20	15
CF275RF200	304 S.S.	336.5	28.5	203.2	231.8	306.3	10.3*30	M8*24	15

Half Nipple 固定法兰焊接头

Nonrotatable



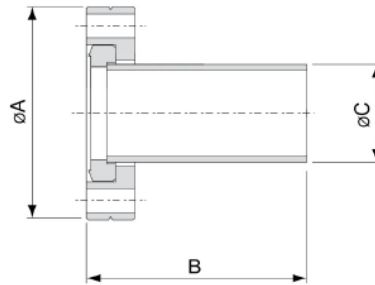
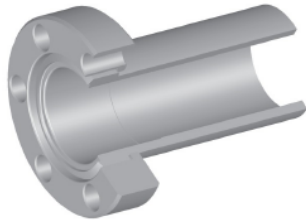
型号 Model No.	材质 Material	英制规格 Inch spec.	A	B	C
CF16HN	304 S.S.	1-1/3"	33.8	38	19.05
CF35HN	304 S.S.	2-3/4"	69.5	63	38.1
CF63HN	304 S.S.	4-1/2"	113.6	105	63.5
CF100HN	304 S.S.	6"	151.6	135	101.6
CF150HN	304 S.S.	8"	202.5	167	152.4
CF200HN	304 S.S.	10"	253.2	167	203.2

* Part number plus "K" for sand blasting surface
* Part number plus "L" for polished surface

* 零件编号加 "K" 用于喷砂表面
* 零件编号加 "L" 用于抛光表面

Half Nipple 旋转法兰焊接头(带螺纹)

Rotatable

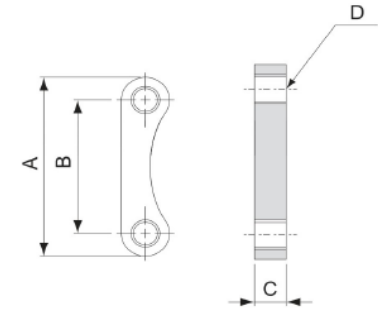


型号 Model No.	材质 Material	英制规格 Inch spec.	A	B	C
CR16HN	304 S.S.	1-1/3"	33.8	38	19.05
CR35HN	304 S.S.	2-3/4"	69.5	63	38.1
CR63HN	304 S.S.	4-1/2"	113.6	105	63.5
CR100HN	304 S.S.	6"	151.6	135	101.6
CR150HN	304 S.S.	8"	202.5	167	152.4
CR200HN	304 S.S.	10"	253.2	167	203.2

* Part number plus "K" for sand blasting surface
* Part number plus "L" for polished surface

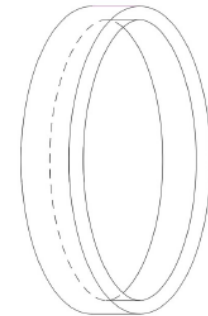
* 零件编号加 "K" 用于喷砂表面
* 零件编号加 "L" 用于抛光表面

Plate Nut 板螺母



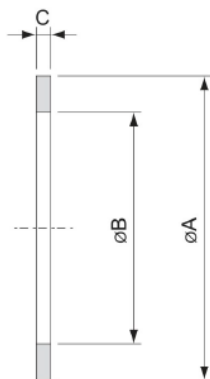
型号 Model No.	材质 Material	A	B	C	D
CF16PN	304 S.S.	19.5	13.5	4	M4
CF35PN	304 S.S.	39.5	29.5	6	M6
CF63PN	304 S.S.	50.2	35.2	8	M8
CF100PN	304 S.S.	40.4	25.4	8.2	M8
CF150PN	304 S.S.	43.3	28.3	8	M8
CF200PN	304 S.S.	45.3	30.3	8	M8

Cap 堵头



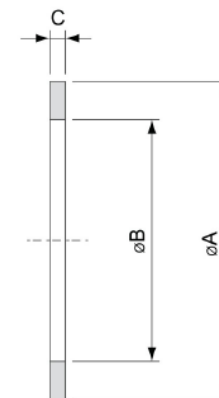
型号 Model No.	材质 Material	适用法兰 Fits Flange
CF16CAP	Polyethylene	CF16
CF35CAP	Polyethylene	CF35
CF63CAP	Polyethylene	CF63
CF100CAP	Polyethylene	CF100
CF150CAP	Polyethylene	CF150
CF200CAP	Polyethylene	CF200

➤ OFHC CF Copper Gasket
无氧铜 CF 铜垫圈



型号 Model No.	A	B	C	适用法兰 Fits Flange	英制规格 Inch spec.
CF16CG	21.3	16	2	CF16	1-1/3"
CF25CG	32.8	25.6	2	CF25	2-1/8"
CF35CG	48.2	36.9	2	CF35	2-3/4"
CF50CG	61.6	50.9	2	CF50	3-3/8"
CF63CG	82.4	63.5	2	CF63	4-1/2"
CF80CG	91.4	76.4	2	CF80	4-5/8"
CF100CG	120.5	101.7	2	CF100	6"
CF125CG	141.4	127.2	2	CF125	6-3/4"
CF150CG	171.1	152.5	2	CF150	8"
CF200CG	222	203.3	2	CF200	10"
CF250CG	272.9	254.2	2	CF250	12"
CF275CG	294.4	274.1	2	CF275	13-1/4"
CF300CG	326	305	2	CF300	14-1/2"
CF300CG-14"	313.1	300	2	CF300-14"	14"
CF350CG	376.7	356.5	2	CF350	16-1/2"

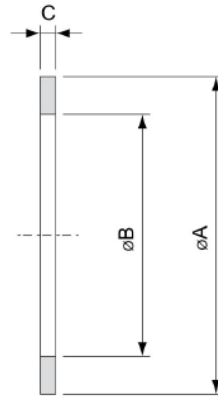
➤ OFHC Annealed Gasket
无氧铜退火垫圈



型号 Model No.	A	B	C	适用法兰 Fits Flange	英制规格 Inch spec.
CF16CGA	21.3	16	2	CF16	1-1/3"
CF25CGA	32.8	25.6	2	CF25	2-1/8"
CF35CGA	48.2	36.9	2	CF35	2-3/4"
CF50CGA	61.6	50.9	2	CF50	3-3/8"
CF63CGA	82.4	63.5	2	CF63	4-1/2"
CF80CGA	91.4	76.4	2	CF80	4-5/8"
CF100CGA	120.5	101.7	2	CF100	6"
CF125CGA	141.4	127.2	2	CF125	6-3/4"
CF150CGA	171.1	152.5	2	CF150	8"
CF200CGA	222	203.3	2	CF200	10"
CF250CGA	272.9	254.2	2	CF250	12"
CF275CGA	294.4	274.1	2	CF275	13-1/4"
CF300CGA	326	305	2	CF300	14-1/2"
CF300CGA-14"	313.1	300	2	CF300-14"	14"
CF350CGA	376.7	356.5	2	CF350	16-1/2"

☞ OFHC+Silver plated Gasket

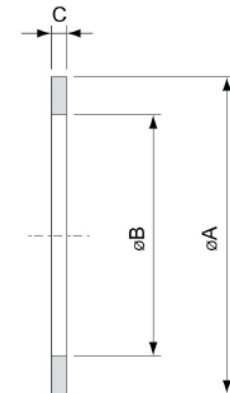
无氧铜+镀银垫片



型号 Model No.	A	B	C	适用法兰 Fits Flange	英制规格 Inch spec.
CF16SPCG	21.3	16	2	CF16	1-1/3"
CF25SPCG	32.8	25.6	2	CF25	2-1/8"
CF35SPCG	48.2	36.9	2	CF35	2-3/4"
CF50SPCG	61.6	50.9	2	CF50	3-3/8"
CF63SPCG	82.4	63.5	2	CF63	4-1/2"
CF80SPCG	91.4	76.4	2	CF80	4-5/8"
CF100SPCG	120.5	101.7	2	CF100	6"
CF125SPCG	141.4	127.2	2	CF125	6-3/4"
CF150SPCG	171.1	152.5	2	CF150	8"
CF200SPCG	222	203.3	2	CF200	10"
CF250SPCG	272.9	254.2	2	CF250	12"
CF275SPCG	294.4	274.1	2	CF275	13-1/4"
CF300SPCG	326	305	2	CF300	14-1/2"
CF300SPCG-14"	313.1	300	2	CF300-14"	14"
CF350SPCG	376.7	356.5	2	CF350	16-1/2"

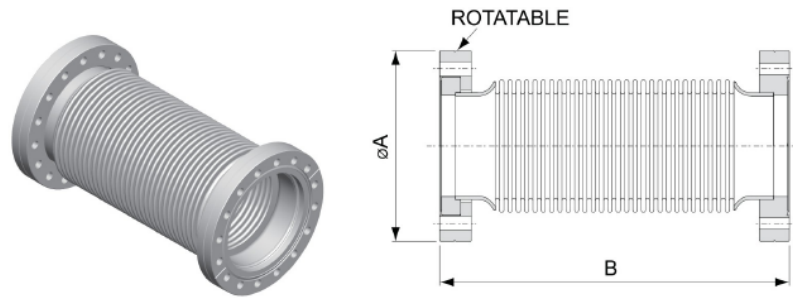
☞ Viton Gasket

氟橡胶垫圈



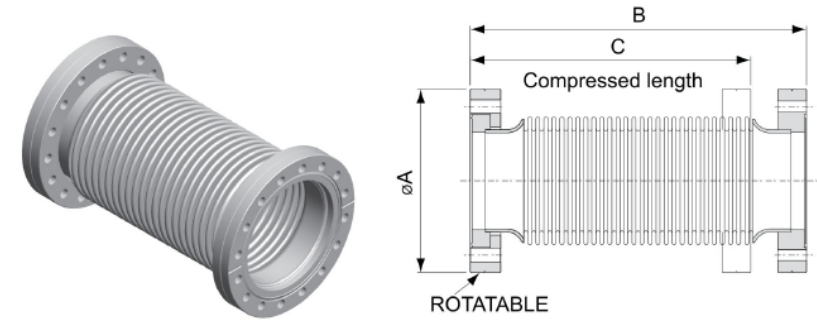
型号 Model No.	A	B	C	适用法兰 Fits Flange	英制规格 Inch spec.
CF16VG	21.3	16	3	CF16	1-1/3"
CF25VG	32.8	26	3	CF25	2-1/8"
CF35VG	48	37	3	CF35	2-3/4"
CF50VG	61.6	51	3	CF50	3-3/8"
CF63VG	82	64	3	CF63	4-1/2"
CF80VG	91	77	3	CF80	4-5/8"
CF100VG	120	101	3	CF100	6"
CF125VG	141.2	127.4	3	CF125	6-3/4"
CF150VG	171	152	3	CF150	8"
CF200VG	222	203	3	CF200	10"
CF250VG	272.7	254.4	3	CF250	12"
CF275VG	294	269	3	CF275	13-1/4"
CF300VG	325.8	305.2	3	CF300	14-1/2"
CF300VG-14"	312.9	300.2	3	CF300-14"	14"
CF350VG	376.7	359	3	CF350	16-1/2"

CF Flexible Hoses-One Flange Rotatable
CF波纹管(旋转法兰连接)



型号 Model No.	材质 Material	A	B
CF16FX250R	304 S.S.	33.8	250
CF16FX500R	304 S.S.	33.8	500
CF16FX750R	304 S.S.	33.8	750
CF16FX1000R	304 S.S.	33.8	1000
CF35FX250R	304 S.S.	69.5	250
CF35FX500R	304 S.S.	69.5	500
CF35FX750R	304 S.S.	69.5	750
CF35FX1000R	304 S.S.	69.5	1000
CF63FXC250R	304 S.S.	113.6	250
CF63FXC500R	304 S.S.	113.6	500
CF63FXC750R	304 S.S.	113.6	750
CF63FXC1000R	304 S.S.	113.6	1000
CF100FXC250R	304 S.S.	151.6	250
CF100FXC500R	304 S.S.	151.6	500
CF100FXC750R	304 S.S.	151.6	750
CF100FXC1000R	304 S.S.	151.6	1000

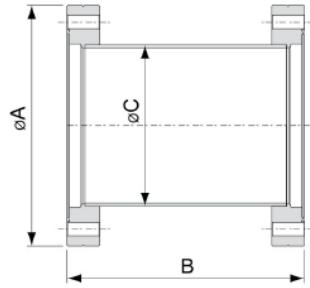
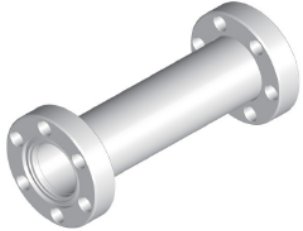
CF Compressible Bellows Connections- One Flange Rotatable
CF波纹管(旋转法兰连接)



型号 Model No.	材质-不包括波纹管 Material Excluding Bellows	A	B	C
CF16FXC150R	304 S.S.	33.8	150	130
CF35FXC180R	304 S.S.	69.5	180	160
CF63FXC210R	304 S.S.	113.6	210	190
CF100FXC270R	304 S.S.	151.6	270	250

CF SERIES

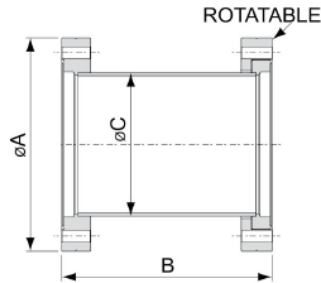
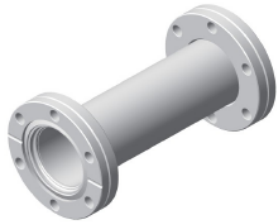
CF Nipples-Fixed CF直管-固定法兰



型号 Model No.	材质 Material	A	B	C
CF16N76	304 S.S.	33.8	76	19.05
CF35N126	304 S.S.	69.5	126	38.1
CF63N210	304 S.S.	113.6	210	63.5
CF100N270	304 S.S.	151.6	270	101.6
CF150N334	304 S.S.	202.5	334	152.4
CF200N334	304 S.S.	253.2	334	203.2

* Part number plus "K" for sand blasting surface * 零件编号加 "K" 用于喷砂表面
* Part number plus "L" for polished surface * 零件编号加 "L" 用于抛光表面

CF Nipples-One Flange Rotatable CF直管-螺纹旋转法兰

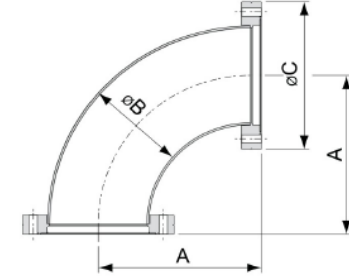
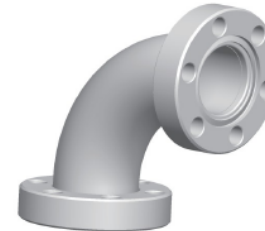


型号 Model No.	材质 Material	A	B	C
CF16NR76	304 S.S.	33.8	76	19.05
CF35NR126	304 S.S.	69.5	126	38.1
CF63NR210	304 S.S.	113.6	210	63.5
CF100NR270	304 S.S.	151.6	270	101.6
CF150NR334	304 S.S.	202.5	334	152.4
CF200NR334	304 S.S.	253.2	334	203.2

* Part number plus "K" for sand blasting surface * 零件编号加 "K" 用于喷砂表面
* Part number plus "L" for polished surface * 零件编号加 "L" 用于抛光表面

CF SERIES

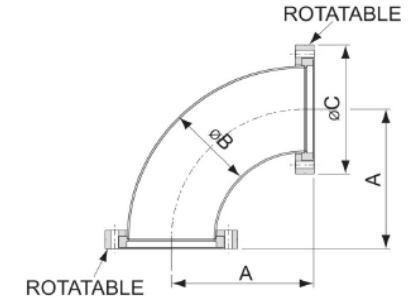
CF 90° Elbows-Fixed CF 90°弯头-固定法兰



型号 Model No.	材质 Material	A	B	C
CF16EL90	304 S.S.	37.5	19.05	33.8
CF35EL90	304 S.S.	79.9	38.1	69.5
CF63EL90	304 S.S.	141.3	63.5	113.6
CF100EL90	304 S.S.	222.2	101.6	151.6
CF150EL90	304 S.S.	241.3	152.4	202.5
CF200EL90	304 S.S.	215.9	219.08	253.2
CF250EL90	304 S.S.	266.7	273.05	336.5

* Part number plus "K" for sand blasting surface * 零件编号加 "K" 用于喷砂表面
* Part number plus "L" for polished surface * 零件编号加 "L" 用于抛光表面

CF90° Elbows-Rotatable CF90°弯头-旋转法兰

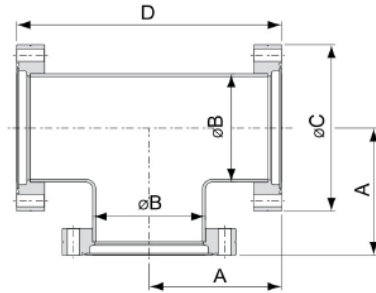
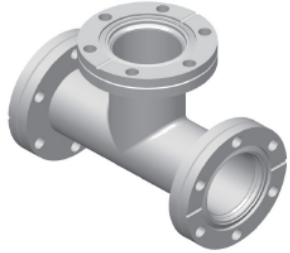


型号 Model No.	材质 Material	A	B	C
CR16EL90	304 S.S.	47.2	19.05	33.8
CR35EL90	304 S.S.	79.8	38.1	69.5
CR63EL90	304 S.S.	141.3	63.5	113.6
CR100EL90	304 S.S.	222.2	101.6	151.6
CR150EL90	304 S.S.	241.3	152.4	202.5
CR200EL90	304 S.S.	215.9	219.08	253.2
CR250EL90	304 S.S.	266.7	273.05	336.5

* Part number plus "K" for sand blasting surface * 零件编号加 "K" 用于喷砂表面
* Part number plus "L" for polished surface * 零件编号加 "L" 用于抛光表面

CF SERIES

CF Tees-Fixed CF三通-固定法兰

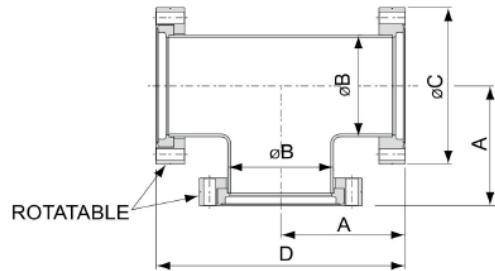
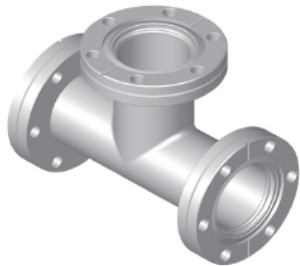


型号 Model No.	材质 Material	A	B	C	D
CF16T	304 S.S.	37.5	19.05	33.8	75
CF35T	304 S.S.	62.5	38.1	69.5	125
CF63T	304 S.S.	85.7	63.5	113.6	171.4
CF100T	304 S.S.	109.5	101.6	151.6	219
CF150T	304 S.S.	139.7	152.4	202.5	279.4

* Part number plus "K" for sand blasting surface
* Part number plus "L" for polished surface

* 零件编号加 "K" 用于喷砂表面
* 零件编号加 "L" 用于抛光表面

CF Tees- Two Flange Rotatable CF三通-旋转法兰



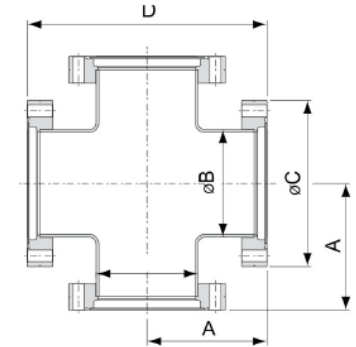
型号 Model No.	材质 Material	A	B	C	D
CR16T	304 S.S.	47.2	19.05	33.8	94.4
CR35T	304 S.S.	62.5	38.1	69.5	125
CR63T	304 S.S.	85.7	63.5	113.6	171.4
CR100T	304 S.S.	109.5	101.6	151.6	219
CR150T	304 S.S.	139.7	152.4	202.5	279.4

* Part number plus "K" for sand blasting surface
* Part number plus "L" for polished surface

* 零件编号加 "K" 用于喷砂表面
* 零件编号加 "L" 用于抛光表面

CF SERIES

CF 4 Way Crosses-Fixed CF四通-固定法兰

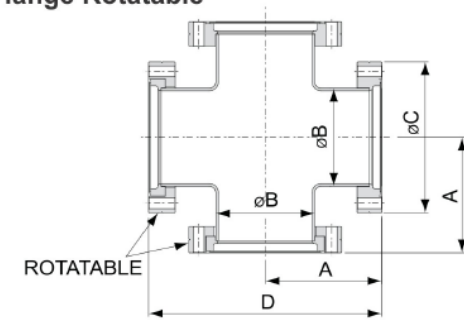
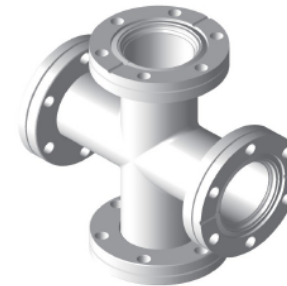


型号 Model No.	材质 Material	A	B	C	D
CF16X	304 S.S.	37.5	19.05	33.8	75
CF35X	304 S.S.	62.5	38.1	69.5	125
CF63X	304 S.S.	85.7	63.5	113.6	171.4
CF100X	304 S.S.	109.5	101.6	151.6	219
CF150X	304 S.S.	139.7	152.4	202.5	279.4

* Part number plus "K" for sand blasting surface
* Part number plus "L" for polished surface

* 零件编号加 "K" 用于喷砂表面
* 零件编号加 "L" 用于抛光表面

CF 4 Way Crosses-Two Flange Rotatable CF四通-旋转法兰



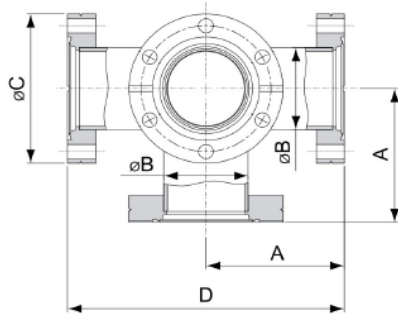
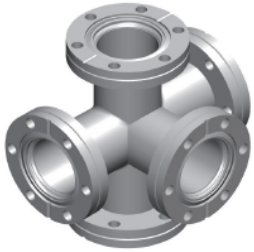
型号 Model No.	材质 Material	A	B	C	D
CR16X	304 S.S.	47.2	19.05	33.8	94.4
CR35X	304 S.S.	62.5	38.1	69.5	125
CR63X	304 S.S.	85.7	63.5	113.6	171.4
CR100X	304 S.S.	109.5	101.6	151.6	219
CR150X	304 S.S.	139.7	152.4	202.5	279.4

* Part number plus "K" for sand blasting surface
* Part number plus "L" for polished surface

* 零件编号加 "K" 用于喷砂表面
* 零件编号加 "L" 用于抛光表面

CF SERIES

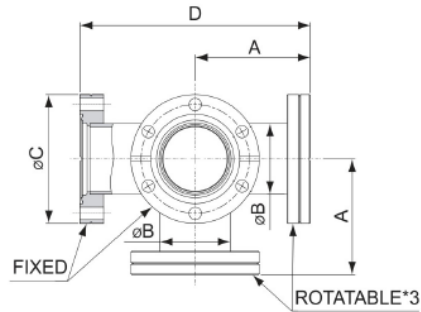
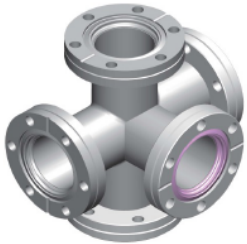
CF Five-Way Crosses-Fixed CF六通-固定法兰



型号 Model No.	材质 Material	A	B	C	D
CF16FXA	304 S.S.	37.5	19.05	33.8	75
CF35FXA	304 S.S.	62.5	38.1	69.5	125
CF63FXA	304 S.S.	85.7	63.5	113.6	171.4
CF100FXA	304 S.S.	109.5	101.6	151.6	219
CF150FXA	304 S.S.	139.7	152.4	202.5	279.4

* Part number plus "K" for sand blasting surface * 零件编号加 "K" 用于喷砂表面
* Part number plus "L" for polished surface * 零件编号加 "L", 用于抛光表面

CF Five-Way Crosses-Three Flange Rotatable CF六通-三面可旋转法兰

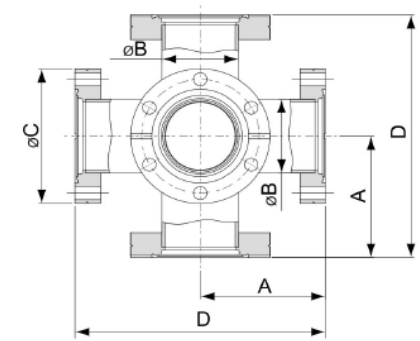
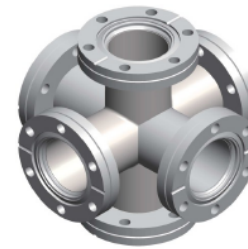


型号 Model No.	材质 Material	A	B	C	D
CR16FXA	304 S.S.	47.2	19.05	33.8	94.4
CR35FXA	304 S.S.	62.5	38.1	69.5	125
CR63FXA	304 S.S.	85.7	63.5	113.6	171.4
CR100FXA	304 S.S.	109.5	101.6	151.6	219
CR150FXA	304 S.S.	139.7	152.4	202.5	279.4

* Part number plus "K" for sand blasting surface * 零件编号加 "K" 用于喷砂表面
* Part number plus "L" for polished surface * 零件编号加 "L", 用于抛光表面

CF SERIES

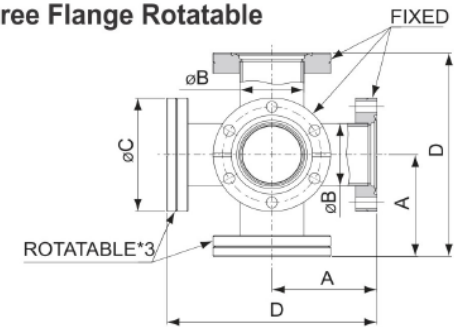
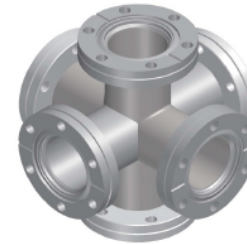
CF Six-Way Crosses-Fixed CF六通-固定法兰



型号 Model No.	材质 Material	A	B	C	D
CF16SXA	304 S.S.	37.5	19.05	33.8	75
CF35SXA	304 S.S.	62.5	38.1	69.5	125
CF63SXA	304 S.S.	85.7	63.5	113.6	171.4
CF100SXA	304 S.S.	109.5	101.6	151.6	219
CF150SXA	304 S.S.	139.7	152.4	202.5	279.4

* Part number plus "K" for sand blasting surface * 零件编号加 "K" 用于喷砂表面
* Part number plus "L" for polished surface * 零件编号加 "L", 用于抛光表面

CF Six-Way Crosses-Three Flange Rotatable CF六通-三面可旋转法兰

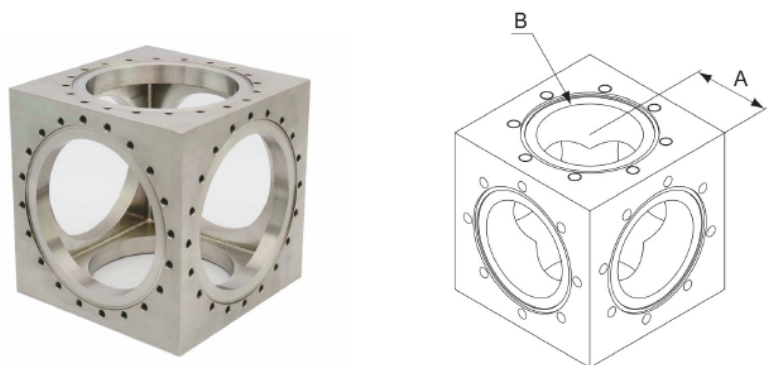


型号 Model No.	材质 Material	A	B	C	D
CR16SXA	304 S.S.	47.2	19.05	33.8	94.4
CR35SXA	304 S.S.	62.5	38.1	69.5	125
CR63SXA	304 S.S.	85.7	63.5	113.6	171.4
CR100SXA	304 S.S.	109.5	101.6	151.6	219
CR150SXA	304 S.S.	139.7	152.4	202.5	279.4

* Part number plus "K" for sand blasting surface * 零件编号加 "K" 用于喷砂表面
* Part number plus "L" for polished surface * 零件编号加 "L", 用于抛光表面

CF CUBES with Fractional Thread

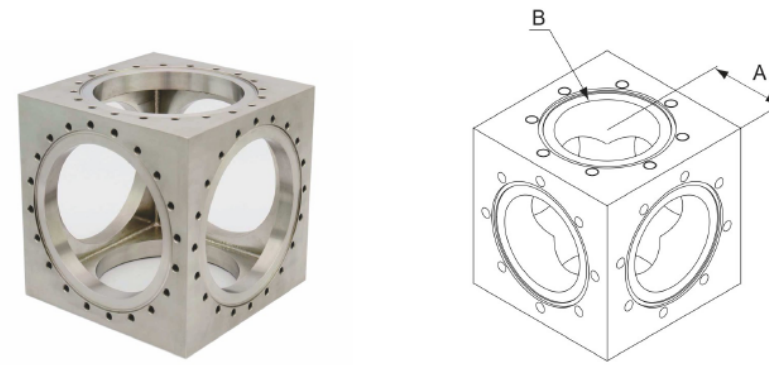
带公制螺纹的CF立方体



型号 Model No.	法兰尺寸 Flange size	材质 Material	A	B	螺纹尺寸 Thread Size	螺纹深度 Thread Depth
CF16CUF	CF16	304 S.S.	17.25	15.7	8-32	6.35
CF35CUF	CF35	304 S.S.	35.05	38.1	.250-28	9.4
CF50CUF	CF50	304 S.S.	43	50.8	.312-24	9.4
CF63CUF	CF63	304 S.S.	56.65	63.5	.312-24	12.7
CF100CUF	CF100	304 S.S.	76.2	102	.312-24	12.7
CF150CUF	CF150	304 S.S.	101.6	152.4	.312-24	12.7
CF200CUF	CF200	304 S.S.	127	203.2	.312-24	12.7

CF CUBES with Metric Thread

带公制螺纹的CF立方体



型号 Model No.	法兰尺寸 Flange size	材质 Material	A	B	螺纹尺寸 Thread Size	螺纹深度 Thread Depth
CF16CUM	CF16	304 S.S.	17.25	15.7	M4	6
CF35CUM	CF35	304 S.S.	35.05	38.1	M6	9
CF50CUM	CF50	304 S.S.	43	50.8	M8	9
CF63CUM	CF63	304 S.S.	56.65	63.5	M8	12
CF100CUM	CF100	304 S.S.	76.2	102	M8	12
CF150CUM	CF150	304 S.S.	101.6	152.4	M8	12
CF200CUM	CF200	304 S.S.	127	203.2	M8	12