

www.renhal.com
sales@renhal.com
+49 8948929647

产品展示

PRODUCT DISPLAY



PRODUCT DISPLAY

产品展示



DEGREE
RETURN:180°
长半径弯头180°



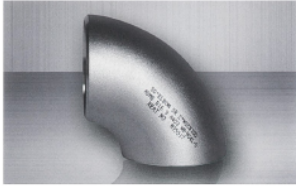
- 尺寸(Size):
无缝(Seamless) 1/2"-24"(DN15-DN600)
有缝(Welded) 1/2"-48"(DN15-DN1200)
- 标准(Standard):
GB/T12459, GB/T13401, SH3408, SH3409, EN10253-4,
ASME B16.9, MSS SP-43, DIN 2605, JIS B2313
- 壁厚(Thickness): SCH5S-XXS
- 材质(Grade): 304/L/H, 316/L/T/H, 317L, 310/S, 347/H, 321/H,
904/L, S32750/SAF2507, S32205/SAF2205, S31803, S32760,
SMO254, N04400, N06600, N06625, N08020, N08800,
N08810, N08825, N10276

STAINLESS STEEL
ELB 90LR
长半径弯头非标准90°



- 尺寸(Size):
无缝(Seamless) 1/2"-24"(DN15-DN600)
有缝(Welded) 1/2"-48"(DN15-DN1200)
- 标准(Standard):
GB/T12459, GB/T13401, SH3408, SH3409, EN10253-4,
ASME B16.9, MSS SP-43, DIN 2605, JIS B2313
- 壁厚(Thickness): SCH5S-XXS
- 材质(Grade): 304/L/H, 316/L/T/H, 317L, 310/S, 347/H, 321/H,
904/L, S32750/SAF2507, S32205/SAF2205, S31803, S32760,
SMO254, N04400, N06600, N06625, N08020, N08800,
N08810, N08825, N10276

STAINLESS STEEL
ELB 90SR
长半径弯头非标准90°



- 尺寸(Size):
无缝(Seamless) 1/2"-24"(DN15-DN600)
有缝(Welded) 1/2"-48"(DN15-DN1200)
- 标准(Standard):
GB/T12459, GB/T13401, SH3408, SH3409, EN10253-4,
ASME B16.9, MSS SP-43, DIN 2605, JIS B2313
- 壁厚(Thickness): SCH5S-XXS
- 材质(Grade): 304/L/H, 316/L/T/H, 317L, 310/S, 347/H, 321/H,
904/L, S32750/SAF2507, S32205/SAF2205, S31803, S32760,
SMO254, N04400, N06600, N06625, N08020, N08800,
N08810, N08825, N10276

STAINLESS STEEL
ELB 45LR
长半径弯头标准45°



- 尺寸(Size):
无缝(Seamless) 1/2"-24"(DN15-DN600)
有缝(Welded) 1/2"-48"(DN15-DN1200)
- 标准(Standard):
GB/T12459, GB/T13401, SH3408, SH3409, EN10253-4,
ASME B16.9, MSS SP-43, DIN 2605, JIS B2313
- 壁厚(Thickness): SCH5S-XXS
- 材质(Grade): 304/L/H, 316/L/T/H, 317L, 310/S, 347/H, 321/H,
904/L, S32750/SAF2507, S32205/SAF2205, S31803, S32760,
SMO254, N04400, N06600, N06625, N08020, N08800,
N08810, N08825, N10276

STAINLESS STEEL
ELB 45SR
长半径弯头非标准45°



- 尺寸(Size):
无缝(Seamless) 1/2"-24"(DN15-DN600)
有缝(Welded) 1/2"-48"(DN15-DN1200)
- 标准(Standard):
GB/T12459, GB/T13401, SH3408, SH3409, EN10253-4,
ASME B16.9, MSS SP-43, DIN 2605, JIS B2313
- 壁厚(Thickness): SCH5S-XXS
- 材质(Grade): 304/L/H, 316/L/T/H, 317L, 310/S, 347/H, 321/H,
904/L, S32750/SAF2507, S32205/SAF2205, S31803, S32760,
SMO254, N04400, N06600, N06625, N08020, N08800,
N08810, N08825, N10276

STAINLESS STEEL
ELB 30SR
长半径弯头非标准30°



- 尺寸(Size):
无缝(Seamless) 1/2"-24"(DN15-DN600)
有缝(Welded) 1/2"-48"(DN15-DN1200)
- 标准(Standard):
GB/T12459, GB/T13401, SH3408, SH3409, EN10253-4,
ASME B16.9, MSS SP-43, DIN 2605, JIS B2313
- 壁厚(Thickness): SCH5S-XXS
- 材质(Grade): 304/L/H, 316/L/T/H, 317L, 310/S, 347/H, 321/H,
904/L, S32750/SAF2507, S32205/SAF2205, S31803, S32760,
SMO254, N04400, N06600, N06625, N08020, N08800,
N08810, N08825, N10276

STAINLESS STEEL
TEE
长颈圆头焊口



- 尺寸(Size):
无缝(Seamless) 1/2"-24"(DN15-DN600)
有缝(Welded) 1/2"-48"(DN15-DN1200)
- 标准(Standard):
GB/T12459, GB/T13401, SH3408, SH3409, EN10253-4,
ASME B16.9, MSS SP-43, DIN 2605, JIS B2313
- 壁厚(Thickness): SCH5S-XXS
- 材质(Grade): 304/LH, 316/L/TH, 317L, 310/S, 347/H, 321/H,
904/L, S32750/SAF2507, S32205/SAF2205, S31803, S32760,
SMO254, N04400, N06600, N06625, N08020, N08800,
N08810, N08825, N10276

STAINLESS STEEL
STRAIGHT TEE
长颈圆头焊口



- 尺寸(Size):
无缝(Seamless) 1/2"-24"(DN15-DN600)
有缝(Welded) 1/2"-48"(DN15-DN1200)
- 标准(Standard):
GB/T12459, GB/T13401, SH3408, SH3409, EN10253-4,
ASME B16.9, MSS SP-43, DIN 2605, JIS B2313
- 壁厚(Thickness): SCH5S-XXS
- 材质(Grade): 304/LH, 316/L/TH, 317L, 310/S, 347/H, 321/H,
904/L, S32750/SAF2507, S32205/SAF2205, S31803, S32760,
SMO254, N04400, N06600, N06625, N08020, N08800,
N08810, N08825, N10276

NON-STANDARD
TEES
非标准焊口



- 尺寸(Size):
无缝(Seamless) 1/2"-24"(DN15-DN600)
有缝(Welded) 1/2"-48"(DN15-DN1200)
- 标准(Standard):
GB/T12459, GB/T13401, SH3408, SH3409, EN10253-4,
ASME B16.9, MSS SP-43, DIN 2605, JIS B2313
- 壁厚(Thickness): SCH5S-XXS
- 材质(Grade): 304/LH, 316/L/TH, 317L, 310/S, 347/H, 321/H,
904/L, S32750/SAF2507, S32205/SAF2205, S31803, S32760,
SMO254, N04400, N06600, N06625, N08020, N08800,
N08810, N08825, N10276

STAINLESS STEEL
CROSS
长颈四面



- 尺寸(Size):
无缝(Seamless) 1/2"-24"(DN15-DN600)
有缝(Welded) 1/2"-48"(DN15-DN1200)
- 标准(Standard):
GB/T12459, GB/T13401, SH3408, SH3409, EN10253-4,
ASME B16.9, MSS SP-43, DIN 2605, JIS B2313
- 壁厚(Thickness): SCH5S-XXS
- 材质(Grade): 304/LH, 316/L/TH, 317L, 310/S, 347/H, 321/H,
904/L, S32750/SAF2507, S32205/SAF2205, S31803, S32760,
SMO254, N04400, N06600, N06625, N08020, N08800,
N08810, N08825, N10276

STAINLESS STEEL
CON RED
长颈圆头异径管



- 尺寸(Size):
无缝(Seamless) 1/2"-24"(DN15-DN600)
有缝(Welded) 1/2"-48"(DN15-DN1200)
- 标准(Standard):
GB/T12459, GB/T13401, SH3408, SH3409, EN10253-4,
ASME B16.9, MSS SP-43, DIN 2605, JIS B2313
- 壁厚(Thickness): SCH5S-XXS
- 材质(Grade): 304/LH, 316/L/TH, 317L, 310/S, 347/H, 321/H,
904/L, S32750/SAF2507, S32205/SAF2205, S31803, S32760,
SMO254, N04400, N06600, N06625, N08020, N08800,
N08810, N08825, N10276

STAINLESS STEEL
ECC RED
长颈圆头异径管



- 尺寸(Size):
无缝(Seamless) 1/2"-24"(DN15-DN600)
- 标准(Standard):
GB/T12459, GB/T13401, SH3408, SH3409, EN10253-4,
ASME B16.9, MSS SP-43, DIN 2605, JIS B2313
- 壁厚(Thickness): SCH5S-XXS
- 材质(Grade): 304/LH, 316/L/TH, 317L, 310/S, 347/H, 321/H,
904/L, S32750/SAF2507, S32205/SAF2205, S31803, S32760,
SMO254, N04400, N06600, N06625, N08020, N08800,
N08810, N08825, N10276

不锈钢圆盖
PIPE CAP
STAINLESS STEEL



- 尺寸(Size): 无缝(Seamless) 1/2"-24"(DN15-DN600)
有缝(Welded) 1/2"-48"(DN15-DN1200)
- 标准(Standard): GB/T12459, GB/T13401, SH3408, SH3409, EN10253-4, ASME B16.9, MSS SP-43, DIN 2605, JIS B2313
- 壁厚(Thickness): SCH5S-XXS
- 材质(Grade): 304/L/H, 316/L/T/H, 317L, 310/S, 347/H, 321/H, 904/L, S32750/SAF2507, S32205/SAF2205, S31803, S32760, SMO254, N04400, N06600, N06625, N08020, N08800, N08810, N08825, N10276

不锈钢圆盖短接
STUB END
STAINLESS STEEL



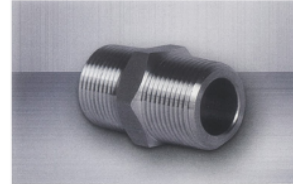
- 尺寸(Size): 无缝(Seamless) 1/2"-24"(DN15-DN600)
有缝(Welded) 1/2"-48"(DN15-DN1200)
- 标准(Standard): ASME B16.9, MSS SP-43
- 壁厚(Thickness): SCH5S-XXS
- 材质(Grade): 304/L/H, 316/L/T/H, 317L, 310/S, 347/H, 321/H, 904/L, S32750/SAF2507, S32205/SAF2205, S31803, S32760, SMO254, N04400, N06600, N06625, N08020, N08800, N08810, N08825, N10276

异径弯头
SANITARY FITTINGS



- 尺寸(Size): DN15-DN400
- 标准(Standard): ISO, SMS, DIN, 3A
- 壁厚(Thickness): 1.5MM-5MM
- 材质(Grade): 304, 304L, 316, 316L, 321

六角双接头
HEXAGONAL
NIPPLE



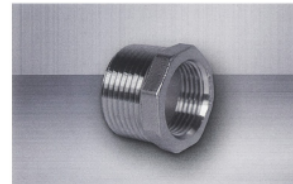
- 尺寸(Size): 1/8"-4"(DN6-DN100)
- 标准(Standard): GB/T14626, HGJ529, ANSI B16.11, BS3799, MSS SP-97
- 壁厚(Thickness): 3000#, 6000#, 9000#
- 材质(Grade): 304/L, 316/L, 321/L, 317/L, 347/H, 904/L, 310S, Duplex2205/S31803/F51, 2507/S32750/F53, A105

锻制承插管件
FORGED SOCKET
WELDED FITTINGS



- 尺寸(Size): 1/8"-4"(DN6-DN100)
- 标准(Standard): GB/T14626, HGJ529, ANSI B16.11, BS3799, MSS SP-97
- 壁厚(Thickness): 3000#, 6000#, 9000#
- 材质(Grade): 304/L, 316/L, 321/L, 317/L, 347/H, 904/L, 310S, Duplex2205/S31803/F51, 2507/S32750/F53, A105

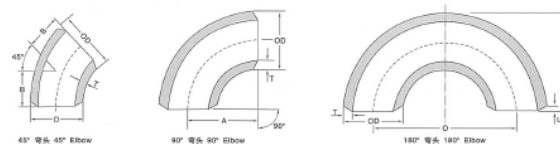
六角头内外螺纹接头
THREADED
UNION



- 尺寸(Size): 1/8"-4"(DN6-DN100)
- 标准(Standard): GB/T14626, HGJ529, ANSI B16.11, BS3799, MSS SP-97
- 壁厚(Thickness): 3000#, 6000#, 9000#
- 材质(Grade): 304/L, 316/L, 321/L, 317/L, 347/H, 904/L, 310S, Duplex2205/S31803/F51, 2507/S32750/F53, A105

目录 Contents

45° 90° 180° 长半径弯头 / Long Radius Elbows(45° 90° 180°)	▶ 02
90° 180° 短半径弯头 / Short Radius Elbows(90° 180°)	▶ 04
三通(等径、异径) / Tees (Straight and Reducing)	▶ 06
异径接头(同心、偏心) / Reducers (Concentric and Eccentric)	▶ 13
管帽 / CAPS	▶ 17
翻边接头 / Stub End	▶ 19
弯管 / Bend	▶ 21
对焊管件形位公差表 / Angularity Tolerance Of Butt Welding Fittings	▶ 22
对焊管件形位公差表 / Angularity tolerance of butt-welding fittings GB/T 12459 & 13401	▶ 23
对焊管件形位公差表 / Angularity tolerance of butt-welding fittings ASME/ANSI B 16.9, B16.28	▶ 24
外径和壁厚表 / Outside Diameter And Wall Thickness GB/T 12459—2017	▶ 25
外径和壁厚表 / Outside Diameter And Wall Thickness SH3408、SH3409	▶ 26
外径和壁厚表 / Outside Diameter And Wall Thickness ASME B36.10M、B36.16M	▶ 27
外径和壁厚表 / Outside Diameter And Wall Thickness JIS B2311、B2312、B2313	▶ 28
奥氏体不锈钢化学成分对照表 / Chemical Composition Table Of Stainless Steel	▶ 29
中外不锈钢牌号对照表 / Comparison Table Between Domestic And Foreign Stainless Steel Grades	▶ 30
美标化学成分对照表 / A403 and A815 Chemical Requirements	▶ 31
承插式管件、螺纹管件尺寸的极限公差 / Tolerances For Socket-welding Fittings, Threaded Fittings	▶ 32



公称口径 Nominal diameter	外径 Outside diameter	中心至 端面的距离 Center to end	中心至中 心的距离 Center to Center	90° L/R弯头理论重量kg/pc 90° L/R Elbow Approx weight						
				sch5S	sch10S	sch20S/ LG	sch40S/ STD	sch80S/ XS	sch80	
15	1.12 18 21.3	16	38	76	0.04 0.05	0.05 0.06	0.06 0.07	0.06 0.08	0.08 0.10	0.08 0.10
20	3/4 25 26.7	19	38	76	0.06 0.06	0.07 0.08	0.09 0.09	0.09 0.10	0.12 0.13	0.12 0.13
25	1 32 33.4	22	38	76	0.07 0.08	0.12 0.13	0.14 0.15	0.14 0.15	0.19 0.19	0.19 0.19
32	1 1/4 38 42.2	25	48	96	0.11 0.13	0.18 0.20	0.21 0.23	0.23 0.26	0.30 0.34	0.30 0.34
40	1 1/2 45 48.3	29	57	114	0.16 0.17	0.26 0.28	0.30 0.32	0.34 0.37	0.45 0.49	0.45 0.49
50	2 57 60.3	35	76	152	0.27 0.29	0.45 0.47	0.57 0.61	0.62 0.65	0.85 0.90	0.85 0.90
65	2 1/2 76 79	44	95	190	0.58 0.55	0.82 0.79	0.97 0.93	1.35 1.30	1.79 1.71	1.79 1.71
80	3 89	51	114	228	0.82 1.09	1.17 1.56	1.51 2.03	2.04 2.85	2.76 3.92	2.76 3.92
90	3 1/2 101.6	57	133	266	1.32 1.40	1.90 2.01	2.47 2.61	3.64 3.85	5.05 5.35	5.05 5.35
100	4 108 114	64	152	304	1.40 2.81	2.01 3.43	2.61 4.99	3.85 6.46	5.35 9.19	5.35 9.19
125	5 133 141.3 139.7	79	190	380	2.67 2.84 4.01	3.27 3.47 4.91	4.74 5.05 7.14	6.14 6.54 10.03	8.72 9.31 15.09	8.72 9.31 15.09
150	6 168.3 159 165	95	229	458	4.10 3.86 7.03	5.01 4.72 9.49	7.29 6.88 15.71	10.24 9.64 20.22	15.41 14.50 30.71	15.41 14.50 30.71
200	8 219 215	127	305	610	7.12 13.82	9.63 16.74	15.94 24.97	20.51 36.53	31.17 49.12	31.17 57.83
250	10 273 267.4	159	381	782	13.64 22.58	16.39 26.01	24.44 35.66	35.56 53.40	48.06 70.44	56.57 95.46
300	12 325 323.9 318	190	457	914	22.66 22.16	26.10 25.53	35.79 35.00	53.58 52.39	70.89 49.11	95.81 93.83

(续)(Continued)

45° 90° 180° 长半径弯头 Long Radius Elbows (45° 90° 180°)

■ 上述尺寸符合 GB/T 12459, GB/T 13401, SH 3408, SH 3409, EN 10253-4, ASME B16.9, MSS SP-43, DIN 2605, JIS B2313标准。
Above dimensions acc. to GB/T 12459, GB/T 13401, SH 3408, SH 3409, EN10253-4, ASME B16.9, MSS SP-43, DIN 2605, JIS B2313.

■ 理论重量按ASME B36.10M、B36.19M标准壁厚测量。(sch20S/LG按GB/T 12459, GB/T 13401标准壁厚测量。)
Weights are approximate and based on manufacturer's data, according to ASME B36.10M、B36.19M. (sch20S/LG,Weights are approximate and based on manufacturer's data, according to GB/T 12459, GB/T 13401.)

We provide: Stainless steel (SAE, DIN, ASTM, JIS, BS, EN, ASME, MSS, GB, SH, GOST, etc.) Special Alloy (Inconel, Hastelloy, Monel, etc.) Our specialized products: stainless steel pipe fittings, stainless steel flanges and stainless steel tubes

三通 (等径、异径)
Tees (straight and reducing)

上述尺寸符合 GB/T 12459, GB/T 13401, SH 3406, SH 3409, EN 10253-4, ASME B16.9, MSS SP-43, DIN 2605, JIS B2313标准。
Above dimensions acc. to GB/T 12459, GB/T 13401, SH 3406, SH 3409, EN10253-4, ASME B16.9, MSS SP-43, DIN 2605, JIS B2313.

理论重量按ANSI B16.19标准壁厚计算
Weights are approximate and based on manufacturer's data, according to ANSI B16.19

We can provide:
Standard steel (SAE, DIN, JIS, BS, ASTM, AISI, EN, BS EN 10253-4)
Double steel (SAE, DIN, JIS, BS, ASTM, AISI, EN, BS EN 10253-4)
Special Alloy (Inconel, Hastelloy, Monel, Titanium, Duplex)
Our speciality products:
stainless steel pipe fittings, stainless steel flanges and stainless steel valves

续上页 Continued from previous page

公称直径 Nominal diameter		外径 Outside diameter	中心至端面的距离 Center to end		理论重量kg/pc Approx weight					
DN	NPS	D1 x D2	C	M	sch5S	sch10S	sch40S/ STD	sch40	sch80S/ XS	sch80
65 x 65	2.1/2 x 2.1/2	76 x 76 73.0 x 73.0	76	76	0.87 0.86	1.25 1.25	2.10 2.10	2.12 2.12	2.80 2.86	2.80 2.86
65 x 50	2.1/2 x 2	76 x 57 73.0 x 60.3	76	70	0.82 0.81	1.17 1.16	2.00 1.98	2.00 1.98	2.70 2.65	2.70 2.65
65 x 40	2.1/2 x 1.1/2	76 x 45 73.0 x 48.3	76	67	0.77 0.76	1.11 1.10	1.89 1.88	1.89 1.88	2.56 2.55	2.56 2.55
65 x 32	2.1/2 x 1.1/4	76 x 38 73.0 x 42.2	76	64	0.75 0.74	1.10 1.08	1.80 1.80	1.80 1.80	2.50 2.50	2.50 2.50
65 x 25	2.1/2 x 1	76 x 32 73.0 x 33.4	76	57	0.76 0.70	1.10 1.07	1.86 1.81	1.86 1.81	2.53 2.08	2.53 2.08
80 x 80	3 x 3	89 x 89	86	86	1.16 1.10	1.66 1.60	3.02 2.87	3.02 2.87	4.19 3.98	4.19 4.02
80 x 65	3 x 2.1/2	89 x 76 88.9 x 73.0	86	83	1.11 1.10	1.62 1.60	2.89 2.87	2.89 2.79	4.02 3.85	4.02 3.85
80 x 50	3 x 2	88.9 x 57 88.9 x 60.3	86	76	1.06 1.07	1.53 1.55	2.76 2.79	2.76 2.79	3.81 3.85	3.81 3.85
80 x 40	3 x 1.1/2	88.9 x 45 88.9 x 48.3	86	73	1.01 1.03	1.49 1.50	2.67 2.69	2.67 2.69	3.70 3.75	3.70 3.75
80 x 32	3 x 1.1/4	89 x 38 89.9 x 42.2	86	70	1.00 1.00	1.48 1.45	2.65 2.60	2.65 2.60	3.68 3.60	3.68 3.60
90 x 90	3.1/2 x 3.1/2	101.6 x 101.6	95	95	1.33 1.26	1.92 1.82	3.61 3.43	3.61 3.43	5.08 4.83	5.08 4.83
90 x 80	3.1/2 x 3	101.6 x 88.9	95	89	1.22 1.17	1.76 1.70	3.32 3.21	3.32 3.21	4.67 4.51	4.67 4.51
90 x 65	3.1/2 x 2.1/2	101.6 x 73.0	95	83	1.20 1.17	1.73 1.70	3.25 3.21	3.25 3.21	4.57 4.51	4.57 4.51
90 x 50	3.1/2 x 2	101.6 x 60.3	95	79	1.17 1.10	1.70 1.62	3.21 3.02	3.21 3.02	4.51 4.19	4.51 4.19
100 x 100	4 x 4	106 x 106 114.3 x 114.3	105	105	1.66 1.60	2.41 2.54	4.75 5.01	4.75 5.01	6.75 7.12	6.75 7.12
100 x 90	4 x 3.1/2	114.3 x 101.6	105	102	1.70 1.55	2.46 2.24	4.85 4.42	4.85 4.42	6.89 6.27	6.89 6.27
100 x 80	4 x 3	108 x 89 114.3 x 88.9	105	98	1.61 1.61	2.33 2.33	4.60 4.60	4.60 4.60	6.52 6.52	6.52 6.52
100 x 65	4 x 2.1/2	108 x 76 114.3 x 73.0	105	95	1.53 1.50	2.21 2.29	4.36 4.41	4.36 4.41	6.50 6.12	6.50 6.12
100 x 50	4 x 2	108 x 57 114.3 x 60.3	105	89	1.51 1.57	2.19 2.29	4.32 4.41	4.32 4.41	6.13 6.12	6.13 6.12
100 x 40	4 x 1.1/2	108 x 45 114.3 x 48.3	105	86	1.50 1.55	2.09 2.24	4.22 4.00	4.22 4.00	6.03 6.02	6.03 6.02
125 x 125	5 x 5	133 x 133 141.3 x 141.3	124	124	3.18 3.37	3.91 4.14	7.53 7.98	7.53 7.98	10.9 11.6	10.9 11.6
125 x 100	5 x 4	133 x 108 141.3 x 114.3	124	117	3.03 3.15	3.73 3.90	7.20 7.52	7.20 7.52	10.4 10.8	10.4 10.8

(续)(Continued)

续上页 Continued from previous page

公称直径 Nominal diameter		外径 Outside diameter	中心至端面的距离 Center to end		理论重量kg/pc Approx weight					
DN	NPS	D1 x D2	C	M	sch5S	sch10S	sch40S/ STD	sch40	sch80S/ XS	sch80
125 x 90	5 x 3.1/2	141.3 x 101.6	124	114	3.09 3.02	3.83 3.74	7.39 7.21	7.39 7.21	10.6 10.4	10.6 10.4
125 x 80	5 x 3	133 x 89 141.3 x 88.9	124	111	2.90 3.02	3.59 3.74	6.92 7.21	6.92 7.21	10.0 10.4	10.0 10.4
125 x 65	5 x 2.1/2	133 x 76 141.3 x 73.0	124	108	2.85 3.00	3.59 3.73	6.92 7.20	6.92 7.20	10.0 10.4	10.0 10.4
125 x 50	5 x 2	133 x 57 141.3 x 60.3	124	105	2.80 3.92	3.58 3.73	6.92 7.20	6.92 7.20	10.0 10.4	10.0 10.4
150 x 150	6 x 6	159 x 159 168.3 x 168.3	143	143	4.09 4.32	5.03 5.31	10.5 11.1	10.5 11.1	16.2 17.1	16.2 17.1
150 x 125	6 x 5	159 x 133 168.3 x 141.3	143	137	3.84 4.13	4.73 5.08	9.88 10.6	9.88 10.6	15.2 16.3	15.2 16.3
150 x 100	6 x 4	159 x 108 168.3 x 114.3	143	130	3.76 3.95	4.64 4.87	9.70 10.2	9.70 10.2	14.9 15.6	14.9 15.6
150 x 90	6 x 3.1/2	168.3 x 101.6	143	127	3.91 3.93	4.82 4.82	10.1 10.1	10.1 10.1	15.5 15.3	15.5 15.3
150 x 80	6 x 3	159 x 89 168.3 x 88.9	143	124	3.72 3.93	4.56 4.82	9.56 10.0	9.56 10.0	14.7 15.3	14.7 15.3
150 x 65	6 x 2.1/2	159 x 76 168.3 x 73.0	143	121	3.70 3.81	4.51 4.72	9.51 10.0	9.51 10.0	14.6 15.2	14.6 15.2
200 x 200	8 x 8	219 x 219	178	178	7.72 7.72	10.4 10.4	22.8 22.8	22.8 22.8	35.4 35.4	35.4 35.4
200 x 150	8 x 6	219 x 159 219.1 x 168.3	178	168	6.74 7.17	9.20 9.74	19.9 21.1	19.9 21.1	30.9 32.8	30.9 32.8
200 x 125	8 x 5	219 x 133 219.1 x 141.3	178	162	6.61 6.84	8.98 9.55	19.5 20.7	19.5 20.7	30.2 31.3	30.2 31.3
200 x 100	8 x 4	219 x 108 219.1 x 114.3	178	156	6.43 6.84	8.73 9.39	19.0 19.9	20.5 20.2	29.4 31.3	29.4 31.3
200 x 90	8 x 3.1/2	219.1 x 101.6	178	152	6.84 6.84	9.18 9.18	19.8 20.1	19.8 20.1	31.1 31.1	31.1 31.1
250 x 250	10 x 10	273 x 273	216	216	14.6 14.6	18.04 18.04	40.04 40.04	40.04 40.04	52.8 52.8	52.8 52.8
250 x 200	10 x 8	273 x 219	216	203	13.3 13.3	16.4 16.4	36.4 36.4	36.4 36.4	49.8 49.8	49.8 49.8
250 x 150	10 x 6	273 x 159 273.1 x 168.3	216	194	11.4 12.1	15.0 15.0	31.4 33.4	31.4 33.4	42.7 45.4	42.7 45.4
250 x 125	10 x 5	273 x 133 273.1 x 141.3	216	191	11.2 11.9	14.8 14.8	30.7 32.7	30.7 32.7	41.8 45.7	41.8 45.7
250 x 100	10 x 4	273 x 108 273.1 x 114.3	216	184	11.0 11.7	14.4 14.4	30.3 32.2	30.3 32.2	41.2 42.9	41.2 42.9
300 x 300	12 x 12	325 x 325 323.9 x 323.9	254	254	21.5 21.5	24.8 24.8	51.8 51.8	51.8 51.8	69.0 69.0	69.0 69.0
300 x 250	12 x 10	325 x 273 323.9 x 273.1	254	241	20.4 20.3	23.6 23.4	49.2 49.1	53.3 53.1	65.6 65.2	65.6 65.2

(续)(Continued)

三通 (等径、异径)
Tees (straight and reducing)

上述尺寸符合 GB/T 12459, GB/T 13401, SH 3406, SH 3409, EN 10253-4, ASME B16.9, MSS SP-43, DIN 2605, JIS B2313标准。
Above dimensions acc. to GB/T 12459, GB/T 13401, SH 3406, SH 3409, EN10253-4, ASME B16.9, MSS SP-43, DIN 2605, JIS B2313.

理论重量按ANSI B16.19标准壁厚计算
Weights are approximate and based on manufacturer's data, according to ANSI B16.19

We can provide:
Standard steel (SAE, DIN, JIS, BS, ASTM, AISI, EN, BS EN 10253-4)
Double steel (SAE, DIN, JIS, BS, ASTM, AISI, EN, BS EN 10253-4)
Special Alloy (Inconel, Hastelloy, Monel, Titanium, Duplex)
Our speciality products:
stainless steel pipe fittings, stainless steel flanges and stainless steel valves

三通 (等径、异径) Tees(straight and reducing)

上述尺寸符合 GB/T 12459, GB/T 13401, SH 3408, SH 3409, EN 10253-4, ASME B16.9, MSS SP-43, DIN 2605, JIS B2313标准。
Above dimensions acc. to GB/T 12459, GB/T 13401, SH 3408, SH 3409, EN10253-4, ASME B16.9, MSS SP-43, DIN 2605, JIS B2313.

理论重量按 ANSI B16.19标准壁厚计算
Weights are approximate and based on manufacturer's data, according to ANSI B16.19

We can provide:
Standard steel (SAE, DIN, JIS, BS, ASTM, GB, EN, etc.)
Special Alloy (Inconel, Hastelloy, Monel, etc.)
Duplex steel (2205, 2507, etc.)
Special Alloy (Inconel, Hastelloy, Monel, etc.)
Duplex steel (2205, 2507, etc.)
Our special products:
stainless steel pipe fittings, stainless steel flanges and stainless steel valves

续上页 Continued from previous page

公称直径 Nominal diameter		外径 Outside diameter		中心至端面的距离 Center to end		理论重量kg/lb Approx weight					
DN	NPS	D1 x D2	C	M	sch5S	sch10S	sch40S/STD	sch40	sch80S/XS	sch80	
300 × 200	12 × 8	325 × 219 323.9 × 219.1	254	229	20.2 23.3	23.3 23.1	48.4 48.2	52.4 52.2	64.4 64.2	86.6 86.4	
300 × 150	12 × 6	325 × 159 323.9 × 168.3	254	219	18.4 19.5	22.5 22.7	44.3 47.1	47.9 51.0	59.0 62.7	81.2 86.4	
300 × 125	12 × 5	325 × 133 323.9 × 141.3	254	216	18.0 19.1	20.8 22.1	43.6 45.3	47.1 50.2	57.8 61.5	79.6 84.6	
350 × 350	14 × 14	377 × 377 355.6 × 355.6	279	279	27.4 25.7	33.1 31.1	66.1 62.0	77.2 72.5	99.0 82.7	132 124	
350 × 300	14 × 12	377 × 325 355.6 × 323.9	279	270	25.8 24.2	31.1 29.2	62.1 58.3	72.5 68.2	92.7 77.7	124 116	
350 × 250	14 × 10	377 × 273 355.6 × 273.1	279	257	25.1 23.7	30.3 28.6	60.5 57.0	70.8 66.7	80.7 76.0	114 111	
350 × 200	14 × 8	377 × 219 355.6 × 219.1	279	248	24.6 23.1	29.7 27.9	59.2 55.7	69.2 65.2	78.0 74.2	111 108	
350 × 150	14 × 6	377 × 159 355.6 × 168.3	279	238	24.0 22.3	29.0 27.1	57.9 54.2	67.8 64.8	77.1 77.8	115 110	
400 × 400	16 × 16	426 × 426 406.4 × 406.4	305	305	33.1 31.4	36.0 36.1	75.9 72.3	101 96.1	131 126	170 162	
400 × 350	16 × 14	426 × 377 406.4 × 355.6	305	305	32.0 30.4	36.8 34.9	73.6 70.1	98.1 93.4	127.8 122.9	179 162	
400 × 300	16 × 12	426 × 325 406.4 × 323.9	305	295	31.0 28.2	35.6 34.4	71.4 69.1	95.2 90.8	124.7 117.3	173 168	
400 × 250	16 × 10	426 × 273 406.4 × 273.1	305	283	30.2 28.7	34.7 33.0	69.9 66.8	83.1 86.7	102.5 97.8	169 161	
400 × 200	16 × 8	426 × 219 406.4 × 219.1	305	273	29.5 28.1	33.9 32.3	66.4 65.1	81.1 86.8	90.2 87.8	165 157	
400 × 150	16 × 6	426 × 159 406.4 × 168.3	305	264	29.2 27.7	33.5 31.8	67.6 64.4	82.7 80.6	99.2 84.8	161 156	
450 × 450	18 × 18	478 × 478 457 × 457	343	343	41.9 39.8	47.8 45.5	95.3 90.7	127 120	162 156	214 208	
450 × 400	18 × 16	478 × 426 457 × 406.4	343	330	41.0 39.0	46.8 44.5	93.3 88.9	124 118	157 153	211 207	
450 × 350	18 × 14	478 × 377 406.4 × 355.6	343	330	40.4 38.3	46.1 43.8	91.9 87.3	123 120	156 153	209 206	
450 × 300	18 × 12	478 × 325 406.4 × 323.9	343	321	39.8 37.3	45.4 42.6	90.6 85.0	121 116	154 151	208 205	
450 × 250	18 × 10	478 × 273 457 × 273.1	343	308	39.3 37.3	44.9 42.6	89.6 85.0	122 116	153 151	207 205	
450 × 200	18 × 8	478 × 219 457 × 219.1	343	296	38.8 36.9	44.3 42.1	89.1 84.7	122 116	152 150	206 202	

(续)(Continued)

www.inoxen.com

续上页 Continued from previous page

公称直径 Nominal diameter		外径 Outside diameter		中心至端面的距离 Center to end		理论重量kg/lb Approx weight					
DN	NPS	D1 x D2	C	M	sch5S	sch10S	sch40S/STD	sch40	sch80S/XS	sch80	
500 × 500	20 × 20	529 × 529 508 × 508	381	381	58.9 56.3	68.2 65.3	117 112	469 449	156 149	186 178	
500 × 450	20 × 18	529 × 478 508 × 457	381	368	57.9 55.4	67.1 64.2	115 110	462 441	154 147	183 175	
500 × 400	20 × 16	529 × 426 508 × 406.4	381	356	57.0 54.7	66.0 63.4	113 109	454 436	151 145	180 173	
500 × 350	20 × 14	529 × 377 508 × 355.6	381	356	56.0 53.7	64.9 62.3	111 107	446 429	148 142	177 170	
500 × 300	20 × 12	529 × 325 508 × 323.9	381	346	55.0 52.9	63.8 61.2	109 105	438 421	146 140	174 167	
500 × 250	20 × 10	529 × 273 508 × 273.1	381	333	54.4 52.2	63.0 60.5	108 104	433 416	144 138	172 165	
500 × 200	20 × 8	529 × 219 508 × 219.1	381	324	53.7 51.5	62.3 59.7	107 102	428 410	142 137	170 163	
550 × 550	22 × 22	559 × 559	419	419	73.5 71.5	85.2 82.5	146 142	635 610	195 187	250 242	
550 × 500	22 × 20	559 × 508	419	406	70.7 68.7	81.9 78.5	141 135	610 584	187 180	242 234	
550 × 450	22 × 18	559 × 457	419	394	67.7 66.1	78.5 76.1	135 130	584 561	180 173	234 226	
550 × 400	22 × 16	559 × 406.4	419	381	66.2 64.6	78.7 75.9	132 130	571 565	179 174	229 224	
550 × 350	22 × 14	559 × 355.6	419	371	64.0 64.0	74.2 72.7	127 126	552 549	170 169	224 223	
550 × 300	22 × 12	559 × 303.9	419	359	62.5 62.5	72.5 72.5	124 124	540 540	166 166	221 221	
550 × 250	22 × 10	559 × 273.1	419	359	62.5 62.5	72.5 72.5	124 124	540 540	166 166	221 221	
600 × 600	24 × 24	630 × 630 610 × 610	432	432	96.0 93.9	110 107	165 161	737 719	230 215	303 286	
600 × 550	24 × 22	630 × 559	432	432	90.1 88.4	103 105	155 158	748 765	206 211	278 291	
600 × 500	24 × 20	630 × 508	432	432	92.2 86.4	105 99.4	158 148	765 701	211 198	291 272	
600 × 450	24 × 18	630 × 478 610 × 457	432	419	88.4 84.5	101 96.9	152 145	734 694	202 193	278 266	
600 × 400	24 × 16	630 × 426 610 × 406.4	432	406	86.4 83.2	99.1 95.7	148 143	718 690	198 191	272 263	
600 × 350	24 × 14	630 × 377 610 × 355.6	432	406	85.5 81.7	98.0 93.5	147 140	710 676	195 187	269 257	
600 × 300	24 × 12	630 × 325 610 × 323.9	432	397	83.5 79.9	95.8 91.5	143 137	678 662	191 182	263 251	
600 × 250	24 × 10	630 × 273 610 × 273.1	432	384	81.6 77.9	93.6 89.3	140 134	662 647	187 178	257 245	
650 × 650	26 × 26	660 × 660	495	495	-	-	-	206	-	274	
650 × 600	26 × 24	660 × 610	495	483	-	-	-	197	-	263	
650 × 550	26 × 22	660 × 559	495	470	-	-	-	189	-	252	

(续)(Continued)

www.inoxen.com

三通 (等径、异径) Tees(straight and reducing)

上述尺寸符合 GB/T 12459, GB/T 13401, SH 3408, SH 3409, EN 10253-4, ASME B16.9, MSS SP-43, DIN 2605, JIS B2313标准。
Above dimensions acc. to GB/T 12459, GB/T 13401, SH 3408, SH 3409, EN10253-4, ASME B16.9, MSS SP-43, DIN 2605, JIS B2313.

理论重量按 ANSI B16.19标准壁厚计算
Weights are approximate and based on manufacturer's data, according to ANSI B16.19

We can provide:
Standard steel (SAE, DIN, JIS, BS, ASTM, GB, EN, etc.)
Special Alloy (Inconel, Hastelloy, Monel, etc.)
Duplex steel (2205, 2507, etc.)
Special Alloy (Inconel, Hastelloy, Monel, etc.)
Duplex steel (2205, 2507, etc.)
Our special products:
stainless steel pipe fittings, stainless steel flanges and stainless steel valves

三通(等径、异径)
Tees(straight and reducing)

上述尺寸符合 GB/T 12459, GB/T 13401, SH 3406, SH 3409, EN 10253-4, ASME B16.9, MSS SP-43, DIN 2605, JIS B2313标准。
Above dimensions acc. to GB/T 12459, GB/T 13401, SH 3406, SH 3409, EN10253-4, ASME B16.9, MSS SP-43, DIN 2605, JIS B2313.

理论重量按ANSI B16.19标准壁厚计算
Weights are approximate and based on manufacturer's data, according to ANSI B16.19

We can provide:
Standard steel (SAE, DIN, JIS, BS, ASTM, ASME, EN, GB, GOST, etc.)
Duplex steel (SAF, 2205, 2207, etc.)
Special Alloy (Inconel, Hastelloy, Monel, etc.)
High strength steel (A507, A508, etc.)
Our specialized products:
stainless steel pipe fittings, stainless steel flanges and stainless steel valves

续上页 Continued from previous page

公称直径 Nominal diameter		外径 Outside diameter		中心至接管端距离 Center to end		理论重量kg/pc Approx weight					
DN	NPS	D1 x D2	C	M	sch5S	sch10S	sch40S/ STD	sch40	sch80S/ XS	sch80	
650 x 500	26 x 20	660 x 508.0	495	457	-	-	185	-	246	-	
650 x 450	26 x 18	660 x 457.2	495	444	-	-	183	-	244	-	
650 x 400	26 x 16	660 x 406.4	495	432	-	-	179	-	238	-	
650 x 350	26 x 14	660 x 355.6	495	432	-	-	175	-	233	-	
650 x 300	26 x 12	660 x 323.9	495	422	-	-	171	-	227	-	
700 x 700	28 x 28	720 x 720 711 x 711	521	521	-	-	232	-	300	-	
700 x 650	28 x 26	711 x 660	521	521	-	-	222	-	293	-	
700 x 600	28 x 24	720 x 630 711 x 610	510	508	-	-	222	-	296	-	
700 x 550	28 x 22	711 x 559	521	495	-	-	204	-	272	-	
700 x 500	28 x 20	720 x 529 711 x 508	521	483	-	-	199	-	266	-	
700 x 450	28 x 18	720 x 478 711 x 457	521	470	-	-	195	-	263	-	
700 x 400	28 x 16	720 x 428 711 x 406.4	521	457	-	-	190	-	259	-	
700 x 350	28 x 14	720 x 377 711 x 355.6	521	457	-	-	183	-	253	-	
700 x 300	28 x 12	720 x 325 711 x 323.9	521	448	-	-	179	-	256	-	
750 x 750	30 x 30	762 x 762	559	559	176	200	264	-	352	-	
750 x 700	30 x 28	762 x 711	559	546	-	-	254	-	338	-	
750 x 650	30 x 26	762 x 660	559	546	-	-	243	-	323	-	
750 x 600	30 x 24	762 x 610	559	533	158	197	238	-	317	-	
750 x 550	30 x 22	762 x 559	559	521	157	195	235	-	314	-	
750 x 500	30 x 20	762 x 508	559	508	153	174	230	-	306	-	
750 x 450	30 x 18	762 x 457	559	495	149	170	224	-	299	-	
750 x 400	30 x 16	762 x 406.4	559	483	146	166	219	-	292	-	
750 x 350	30 x 14	762 x 355.6	559	483	141	166	211	-	285	-	
750 x 300	30 x 12	762 x 323.9	559	473	137	156	206	-	275	-	
750 x 250	30 x 10	762 x 273	559	460	132	150	198	-	264	-	
800 x 800	32 x 32	820 x 820 813 x 813	597	597	-	-	303	-	405	-	
800 x 750	32 x 30	813 x 762	597	584	-	-	290	-	386	-	
800 x 700	32 x 28	820 x 720 813 x 711	597	572	-	-	291	-	388	-	
800 x 650	32 x 26	813 x 660	597	572	-	-	277	-	370	-	

(续)Continued)

续上页 Continued from previous page

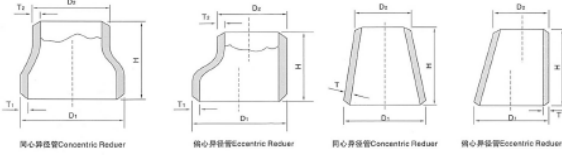
公称直径 Nominal diameter		外径 Outside diameter		中心至接管端距离 Center to end		理论重量kg/pc Approx weight					
DN	NPS	D1 x D2	C	M	sch5S	sch10S	sch40S/ STD	sch40	sch80S/ XS	sch80	
800 x 600	32 x 24	820 x 630 813 x 610	597	559	-	-	279	-	356	-	
800 x 550	32 x 22	813 x 559	597	546	-	-	262	-	350	-	
800 x 500	32 x 20	820 x 529 813 x 508	597	533	-	-	273	-	364	-	
800 x 450	32 x 18	820 x 478 813 x 457	597	521	-	-	270	-	362	-	
800 x 400	32 x 16	820 x 426 813 x 406.4	597	508	-	-	264	-	352	-	
800 x 350	32 x 14	820 x 377 813 x 355.6	597	508	-	-	258	-	344	-	
850 x 850	34 x 34	864 x 864	635	635	-	-	341	626	415	-	
850 x 800	34 x 32	864 x 813	635	622	-	-	328	610	437	-	
850 x 750	34 x 30	864 x 762	635	610	-	-	314	-	419	-	
850 x 700	34 x 28	864 x 711	635	597	-	-	307	-	409	-	
850 x 650	34 x 26	864 x 660	635	597	-	-	304	-	405	-	
850 x 600	34 x 24	864 x 610	635	584	-	-	297	545	396	-	
850 x 550	34 x 22	864 x 559	635	572	-	-	290	532	387	-	
850 x 500	34 x 20	864 x 508	635	559	-	-	283	520	378	-	
850 x 450	34 x 18	864 x 457	635	546	-	-	273	501	364	-	
850 x 400	34 x 16	864 x 406.7	635	533	-	-	266	486	355	-	
900 x 900	36 x 36	920 x 920 914 x 914	673	673	-	-	648	786	543	-	
900 x 850	36 x 34	914 x 864	673	660	-	-	619	736	511	-	
900 x 800	36 x 32	920 x 820 914 x 813	673	648	-	-	370	741	594	-	
900 x 750	36 x 30	914 x 762	673	635	-	-	353	690	470	-	
900 x 700	36 x 28	920 x 720 914 x 711	673	622	-	-	355	-	473	-	
900 x 650	36 x 26	914 x 660	673	622	-	-	341	-	455	-	
900 x 600	36 x 24	914 x 610	673	610	-	-	326	651	434	-	
900 x 550	36 x 22	914 x 559	673	597	-	-	318	636	424	-	
900 x 500	36 x 20	920 x 529 914 x 508	673	584	-	-	347	695	462	-	
900 x 450	36 x 18	920 x 478 914 x 457	673	572	-	-	343	693	457	-	
900 x 400	36 x 16	920 x 426 914 x 406.4	673	559	-	-	287	669	447	-	

三通(等径、异径)
Tees(straight and reducing)

上述尺寸符合 GB/T 12459, GB/T 13401, SH 3406, SH 3409, EN 10253-4, ASME B16.9, MSS SP-43, DIN 2605, JIS B2313标准。
Above dimensions acc. to GB/T 12459, GB/T 13401, SH 3406, SH 3409, EN10253-4, ASME B16.9, MSS SP-43, DIN 2605, JIS B2313.

理论重量按ANSI B16.19标准壁厚计算
Weights are approximate and based on manufacturer's data, according to ANSI B16.19

We can provide:
Standard steel (SAE, DIN, JIS, BS, ASTM, ASME, EN, GB, GOST, etc.)
Duplex steel (SAF, 2205, 2207, etc.)
Special Alloy (Inconel, Hastelloy, Monel, etc.)
High strength steel (A507, A508, etc.)
Our specialized products:
stainless steel pipe fittings, stainless steel flanges and stainless steel valves



异径接头(同心、偏心)
Reducers (concentric and eccentric)

上述尺寸符合 GB/T 12459, GB/T 13401, SH 3408, SH 3409, EN 10253-4, ASME B16.9, MSS SP-43, DIN 2605, JIS B2313标准。
Above dimensions acc. to GB/T 12459, GB/T 13401, SH 3408, SH 3409, EN 10253-4, ASME B16.9, MSS SP-43, DIN 2605, JIS B2313.

理论重量按ANSI B16.19标准壁厚计算
Weights are approximate and based on manufacturer's data, according to ANSI B16.19

公称直径 Nominal diameter		外径 Outside diameter	端面至端面的距离 End to end	理论重量kg/pc Approx. weight					
DN	NPS	D1 x D2	H	sch5S	sch10S	sch40S/STD	sch40	sch80S/XS	sch80
20 x 15	3/4 x 1/2	25 x 18 26.7 x 21.3	38	0.03 0.04	0.04 0.04	0.06 0.06	0.06 0.07	0.07 0.07	0.07 0.07
25 x 20	1 x 3/4	32 x 25 33.4 x 26.7	51	0.06 0.08	0.09 0.10	0.11 0.11	0.11 0.11	0.14 0.15	0.14 0.15
25 x 15	1 x 1/2	32 x 18 33.4 x 21.3	51	0.05 0.06	0.08 0.09	0.09 0.10	0.09 0.10	0.12 0.13	0.12 0.13
32 x 25	1.1/4 x 1	38 x 32 42.2 x 33.4	51	0.07 0.08	0.11 0.12	0.14 0.15	0.14 0.15	0.18 0.20	0.18 0.20
32 x 20	1.1/4 x 3/4	38 x 25 42.2 x 26.7	51	0.08 0.07	0.10 0.11	0.13 0.14	0.13 0.14	0.18 0.18	0.18 0.18
32 x 15	1.1/4 x 1/2	38 x 18 42.2 x 21.3	51	0.06 0.07	0.09 0.11	0.11 0.13	0.11 0.13	0.14 0.17	0.14 0.17
40 x 32	1.1/2 x 1.1/4	45 x 38 48.3 x 33.4	64	0.11 0.11	0.17 0.19	0.22 0.24	0.22 0.24	0.29 0.32	0.29 0.32
40 x 25	1.1/2 x 1	45 x 32 48.3 x 33.4	64	0.10 0.10	0.16 0.17	0.20 0.22	0.20 0.22	0.27 0.29	0.27 0.29
40 x 20	1.1/2 x 3/4	45 x 25 48.3 x 26.7	64	0.09 0.10	0.15 0.16	0.20 0.20	0.20 0.20	0.24 0.26	0.24 0.26
40 x 15	1.1/2 x 1/2	45 x 18 48.3 x 21.3	64	0.08 0.09	0.13 0.15	0.18 0.19	0.21 0.21	0.24 0.24	0.24 0.24
50 x 40	2 x 1.1/2	57 x 45 60.3 x 48.3	76	0.16 0.17	0.26 0.27	0.35 0.37	0.35 0.37	0.47 0.51	0.47 0.51
50 x 32	2 x 1.1/4	57 x 38 60.3 x 42.2	76	0.15 0.16	0.24 0.26	0.32 0.35	0.32 0.35	0.44 0.48	0.44 0.48
50 x 25	2 x 1	57 x 32 60.3 x 33.4	76	0.14 0.14	0.22 0.24	0.30 0.32	0.30 0.32	0.41 0.44	0.41 0.44
65 x 50	2.1/2 x 2	76 x 57 79.3 x 51.3	89	0.30 0.30	0.43 0.43	0.70 0.70	0.70 0.70	0.92 0.92	0.92 0.92
65 x 40	2.1/2 x 1.1/2	76 x 45 79.3 x 48.3	89	0.28 0.28	0.40 0.40	0.64 0.63	0.64 0.63	0.84 0.83	0.84 0.83
65 x 32	2.1/2 x 1.1/4	76 x 38 79.3 x 42.2	89	0.28 0.27	0.38 0.38	0.60 0.60	0.60 0.60	0.79 0.79	0.79 0.79
65 x 25	2.1/2 x 1	76 x 32 79.3 x 33.4	89	0.25 0.25	0.36 0.35	0.57 0.56	0.57 0.56	0.75 0.73	0.75 0.73
80 x 65	3 x 2.1/2	89 x 76 88.9 x 75.0	89	0.38 0.37	0.54 0.53	0.93 0.91	0.93 0.91	1.26 1.23	1.26 1.23
80 x 50	3 x 2	89 x 57 88.9 x 60.3	89	0.34 0.35	0.48 0.49	0.83 0.84	0.83 0.84	1.11 1.13	1.11 1.13

(续)(Continued)

www.inoxengroup.com

续上页 Continued from previous page

公称直径 Nominal diameter		外径 Outside diameter	端面至端面的距离 End to end	理论重量kg/pc Approx. weight					
DN	NPS	D1 x D2	H	sch5S	sch10S	sch40S/STD	sch40	sch80S/XS	sch80
80 x 40	3 x 1.1/2	89 x 45 88.9 x 46.3	89	0.31 0.32	0.45 0.45	0.76 0.76	0.76 0.78	1.02 1.02	1.02 1.05
80 x 80	3.1/2 x 3	101.6 x 88.9	102	0.50	0.72	1.29	1.29	1.77	1.77
90 x 65	3.1/2 x 2.1/2	101.6 x 73.0	102	0.46	0.66	1.12	1.12	1.43	1.63
90 x 50	3.1/2 x 2	101.6 x 60.3	102	0.43	0.62	1.10	1.10	1.51	1.51
90 x 40	4 x 3.1/2	101.6 x 48.3	102	0.41	0.58	1.03	1.03	1.40	1.40
100 x 90	3.1/2 x 1.1/2	114.3 x 101.6	102	0.57	0.82	1.55	1.55	2.41	2.41
100 x 80	4 x 3	108 x 89	102	0.52 0.54	0.75 0.77	1.41 1.41	1.41 1.46	1.94 2.02	1.94 2.02
100 x 65	4 x 2.1/2	108 x 76 114.3 x 73.0	102	0.49 0.50	0.70 0.72	1.32 1.35	1.32 1.35	1.82 1.87	1.82 1.87
100 x 50	4 x 2	108 x 57 114.3 x 60.3	102	0.44 0.48	0.64 0.68	1.19 1.27	1.19 1.27	1.64 1.75	1.64 1.75
125 x 100	5 x 4	133 x 108 141.3 x 114.3	127	1.04 1.11	1.27 1.35	2.35 2.50	2.35 2.50	3.33 3.55	3.33 3.55
125 x 90	5 x 3.1/2	141.3 x 101.6	127	1.06	1.29	2.36	2.36	3.38	3.36
125 x 80	5 x 3	133 x 89 141.3 x 88.9	127	0.97 1.01	1.19 1.23	2.17 2.27	2.17 2.27	3.07 3.25	3.07 3.25
125 x 65	5 x 2.1/2	133 x 76 141.3 x 73.0	127	0.92 0.95	1.12 1.16	2.06 2.14	2.06 2.14	2.91 3.02	2.91 3.02
150 x 125	6 x 5	159 x 133 168.3 x 141.3	140	1.40 1.48	1.71 1.81	3.42 3.64	3.42 3.64	5.14 5.47	5.14 5.47
150 x 100	6 x 4	159 x 108 168.3 x 114.3	140	1.29 1.37	1.58 1.67	3.15 3.36	3.15 3.36	4.72 5.03	4.72 5.03
150 x 90	6 x 3.1/2	168.3 x 101.6	140	1.32	1.61	3.23	3.23	4.63	4.63
150 x 80	6 x 3	159 x 89 168.3 x 88.9	140	1.21 1.26	1.48 1.53	2.96 3.07	2.96 3.07	4.41 4.58	4.41 4.58
200 x 150	8 x 6	219 x 159 219.1 x 168.3	152	2.00 2.04	2.70 2.75	5.65 5.77	5.65 5.77	8.55 8.73	8.55 8.73
200 x 125	8 x 5	219 x 133 219.1 x 141.3	152	1.90 1.93	2.56 2.60	5.35 5.44	5.35 5.44	8.09 8.23	8.09 8.23
200 x 100	8 x 4	219 x 108 219.1 x 114.3	152	1.80 1.83	2.43 2.46	5.07 5.14	5.07 5.14	7.64 7.75	7.64 7.75
250 x 200	10 x 8	273 x 219	178	3.72	4.56	9.74	9.74	15.5	15.5
250 x 150	10 x 6	273 x 159 273.1 x 168.3	178	3.38 3.43	4.15 4.21	8.83 8.96	8.83 9.12	14.0 14.2	14.0 14.2
250 x 125	10 x 5	273 x 133 273.1 x 141.3	178	3.25 3.29	3.99 4.04	8.47 8.59	8.47 8.61	13.4 13.6	13.4 13.6
300 x 250	12 x 10	325 x 273 325.9 x 279.1	203	5.56 5.57	6.88 6.88	13.9 13.9	13.9 13.9	24.8 24.8	24.8 24.8
300 x 200	12 x 8	325 x 219 325.9 x 219.1	203	5.57 5.56	6.42 6.41	12.9 12.9	12.9 12.9	23.0 23.0	23.0 23.0

(续)(Continued)

www.inoxengroup.com

异径接头(同心、偏心)
Reducers (concentric and eccentric)

上述尺寸符合 GB/T 12459, GB/T 13401, SH 3408, SH 3409, EN 10253-4, ASME B16.9, MSS SP-43, DIN 2605, JIS B2313标准。
Above dimensions acc. to GB/T 12459, GB/T 13401, SH 3408, SH 3409, EN 10253-4, ASME B16.9, MSS SP-43, DIN 2605, JIS B2313.

理论重量按ANSI B16.19标准壁厚计算
Weights are approximate and based on manufacturer's data, according to ANSI B16.19

We comply with GB/T 12459, GB/T 13401, SH 3408, SH 3409, EN 10253-4, ASME B16.9, MSS SP-43, DIN 2605, JIS B2313 standard.
Above dimensions acc. to GB/T 12459, GB/T 13401, SH 3408, SH 3409, EN 10253-4, ASME B16.9, MSS SP-43, DIN 2605, JIS B2313.
Our specialized products stainless steel pipe, stainless steel flange and stainless steel valve.

**异径接头(同心、偏心)
Reducers (concentric and eccentric)**

上述尺寸符合 GB/T 12459, GB/T 13401, SH 3406, SH 3409, EN 10253-4, ASME B16.9, MSS SP-43, DIN 2605, JIS B2313标准。
Above dimensions acc. to GB/T 12459, GB/T 13401, SH 3406, SH 3409, EN10253-4, ASME B16.9, MSS SP-43, DIN 2605, JIS B2313.

理论重量按ANSI B16.19标准壁厚计算
Weights are approximate and based on manufacturer's data, according to ANSI B16.19

We can provide:
Stainless steel (201, 304, 304L, 316, 316L, 321, 316H, 321H, 321L, 321H, 316Ti, 316L, 316H, 316TiH, 316LH, 316TiH, 316LH)
Double steel (S15700/S30703/309, S30703/S316, S316Ti)
Special Alloy (Inconel 600, Inconel 625, Inconel 718, Hastelloy C276, Hastelloy C22)
Cup special steel products
Stainless steel pipe fittings, stainless steel flanges and stainless steel tubes

续上页 Continued from previous page

公称直径 Nominal diameter	外径 Outside diameter	端面至端面的距离 End to end	理论重量kg/pc Approx weight						
			sch5S	sch10S	sch40S/STD	sch40	sch80S/XS	sch80	
300 × 150	12 × 6	325 × 159 323.9 × 166.3	203	5.17 5.22	5.95 6.00	12.0 12.1	12.9 13.0	15.7 15.9	21.2 21.4
350 × 300	14 × 12	377 × 325 355.6 × 323.9	330	11.4 11.0	13.7 13.2	26.6 25.6	30.9 29.8	35.1 33.8	51.6 49.5
350 × 250	14 × 10	377 × 273 355.6 × 273.1	330	10.6 10.2	12.8 12.3	24.8 23.8	28.8 27.7	32.7 31.4	48.0 46.1
350 × 200	14 × 8	377 × 219 355.6 × 219.1	330	9.89 9.46	11.9 11.4	23.0 22.0	26.7 25.5	30.3 29.0	44.5 42.5
350 × 150	14 × 6	377 × 159 355.6 × 166.3	330	9.63 9.22	11.0 10.5	21.1 20.2	24.5 23.5	27.8 26.6	40.7 38.9
400 × 350	16 × 14	426 × 377 406.4 × 355.6	356	14.9 14.1	16.9 16.1	32.9 31.2	43.5 41.2	49.5 47.9	71.7 67.9
400 × 300	16 × 12	426 × 325 406.4 × 323.9	356	14.0 13.6	16.0 15.4	31.0 29.9	40.9 39.5	46.9 45.1	67.4 65.1
400 × 250	16 × 10	426 × 273 406.4 × 273.1	356	13.2 12.7	15.0 14.5	29.1 28.1	38.4 37.1	44.3 43.1	63.1 60.9
400 × 200	16 × 8	426 × 219 406.4 × 219.1	356	12.4 11.9	14.1 13.6	27.3 26.2	36.0 34.6	41.0 39.5	59.1 56.7
400 × 150	16 × 6	426 × 159 406.4 × 166.3	356	11.5 9.96	13.1 12.7	25.3 24.5	33.3 32.3	39.3 37.7	54.5 52.7
450 × 400	18 × 16	478 × 426 457 × 406.4	381	17.9 17.1	20.4 19.5	39.7 37.9	58.8 56.1	67.4 64.5	96.1 91.6
450 × 350	18 × 14	478 × 377 457 × 355.6	381	17.1 16.2	19.4 18.5	37.7 35.9	55.8 53.0	64.9 61.4	91.1 86.3
450 × 300	18 × 12	478 × 325 457 × 323.9	381	16.2 15.7	18.5 17.9	35.8 34.7	53.0 51.2	61.4 57.8	86.3 83.4
450 × 250	18 × 10	478 × 273 457 × 273.1	381	15.4 14.8	17.6 16.9	34.1 32.8	50.3 48.4	58.0 55.3	81.8 78.6
450 × 200	18 × 8	478 × 219 457 × 219.1	381	14.5 14.0	16.5 15.9	32.0 30.8	47.3 45.5	54.9 52.7	76.7 73.7
500 × 450	20 × 18	529 × 478 508 × 457	508	30.4 29.1	35.2 33.7	59.1 56.6	82.5 79.6	96.2 92.7	136 130
500 × 400	20 × 16	529 × 426 508 × 406.4	508	28.9 27.7	33.4 32.0	56.2 53.8	87.9 84.1	101.4 97.1	149 142
500 × 350	20 × 14	529 × 377 508 × 355.6	508	27.6 26.3	31.9 30.4	53.6 51.0	83.8 79.7	109 104	148 135
500 × 300	20 × 12	529 × 325 508 × 323.9	508	26.2 25.4	30.3 29.4	50.8 49.3	79.4 77.0	97.2 95.1	134 130
500 × 250	20 × 10	529 × 273 508 × 273.1	508	24.8 24.0	28.7 27.8	48.2 46.2	75.2 72.8	93.7 91.7	127 123
500 × 200	20 × 8	529 × 219 508 × 219.1	508	23.5 22.7	27.1 26.2	45.5 43.9	70.9 68.5	88.0 86.1	119 115

(续)(Continued)

www.inoxengroup.com

续上页 Continued from previous page

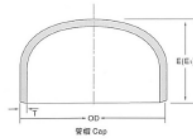
公称直径 Nominal diameter	外径 Outside diameter	端面至端面的距离 End to end	理论重量kg/pc Approx weight						
			sch5S	sch10S	sch40S/STD	sch40	sch80S/XS	sch80	
550 × 500	22 × 20	559 × 508	508	32.1	37.3	62.7	-	83.0	182
550 × 450	22 × 18	559 × 457	508	30.8	35.0	59.9	-	79.3	174
550 × 400	22 × 16	559 × 406.4	508	29.4	34.0	57.2	-	75.7	165
550 × 350	22 × 14	559 × 355.6	508	28.0	32.5	54.5	-	72.1	157
600 × 550	24 × 22	610 × 559	508	28.0	46.8	68.8	-	91.2	215
600 × 500	24 × 20	630 × 509 610 × 508	508	40.4 39.2	48.2 44.9	68.0 65.0	123	90.1 87.4	212 206
600 × 450	24 × 18	630 × 478 610 × 457	508	39.1 37.6	44.7 43.1	65.8 63.3	119	87.1 83.9	205 197
600 × 400	24 × 16	630 × 426 610 × 406.4	508	37.5 36.1	43.0 41.3	63.1 60.7	114	83.6 80.4	197 189
650 × 600	26 × 24	660 × 610	610	-	-	89.8	-	119	-
650 × 550	26 × 22	660 × 559	610	-	-	86.3	-	114	-
650 × 500	26 × 20	660 × 508	610	-	-	83.0	-	110	-
650 × 450	26 × 18	660 × 457	610	-	-	80.0	-	105	-
700 × 650	28 × 26	711 × 660	610	-	-	97.1	-	129	-
700 × 600	28 × 24	720 × 630 711 × 610	610	-	-	95.7	-	127	-
700 × 550	28 × 22	711 × 559	610	-	-	92.4	-	120	-
750 × 700	30 × 28	762 × 711	610	-	-	104	-	139	-
750 × 650	30 × 26	762 × 660	610	-	-	101	-	133	-
750 × 600	30 × 24	762 × 610	610	66.4	82.7	97.8	-	130	-
750 × 550	30 × 22	762 × 559	610	63.9	80.0	94.5	-	125	-
800 × 750	32 × 30	813 × 762	610	-	-	112	-	148	-
800 × 700	32 × 28	820 × 720 812 × 711	610	-	-	109	-	145	-
800 × 650	32 × 26	812 × 660	610	-	-	105	-	139	-
800 × 600	32 × 24	820 × 630 813 × 610	610	-	-	104	-	138	-
850 × 800	34 × 32	864 × 813	610	-	-	119	-	158	-
850 × 750	34 × 30	864 × 762	610	-	-	116	-	153	-
850 × 700	34 × 28	864 × 711	610	-	-	112	-	148	-
850 × 650	34 × 26	864 × 660	610	-	-	109	-	145	-
900 × 850	36 × 34	914 × 864	610	-	-	126	-	166	-
900 × 800	36 × 32	920 × 820 914 × 813	610	-	-	124	-	164	-
900 × 750	36 × 30	914 × 762	610	-	-	123	-	163	-
900 × 700	36 × 28	920 × 720 914 × 711	610	-	-	118	-	156	-
				-	-	117	-	155	-

**异径接头(同心、偏心)
Reducers (concentric and eccentric)**

上述尺寸符合 GB/T 12459, GB/T 13401, SH 3406, SH 3409, EN 10253-4, ASME B16.9, MSS SP-43, DIN 2605, JIS B2313标准。
Above dimensions acc. to GB/T 12459, GB/T 13401, SH 3406, SH 3409, EN10253-4, ASME B16.9, MSS SP-43, DIN 2605, JIS B2313.

理论重量按ANSI B16.19标准壁厚计算
Weights are approximate and based on manufacturer's data, according to ANSI B16.19

We can provide:
Stainless steel (201, 304, 304L, 316, 316L, 321, 316H, 321H, 321L, 316Ti, 316L, 316H, 316TiH, 316LH, 316TiH, 316LH)
Double steel (S15700/S30703/309, S30703/S316, S316Ti)
Special Alloy (Inconel 600, Inconel 625, Inconel 718, Hastelloy C276, Hastelloy C22)
Cup special steel products
Stainless steel pipe fittings, stainless steel flanges and stainless steel tubes



管帽CAPS

公称直径 Nominal diameter		外径 Outside diameter	背至末端距离 Back to end		(E型) 理论重量kg/pc (E) Approx weight					
DN	NPS	OD	E	E1	sch5S	sch10S	sch40S/ STD	sch40	sch80S/ XS	sch80
15	1/2	18 21.3	25	25	0.019 0.022	0.024 0.028	0.031 0.037	0.042 0.050	0.042 0.050	0.042 0.050
20	3/4	25 26.7	25	25	0.027 0.029	0.033 0.035	0.045 0.048	0.045 0.048	0.060 0.065	0.060 0.065
25	1	32 33.7	38	38	0.049 0.052	0.063 0.067	0.101 0.106	0.101 0.106	0.136 0.143	0.136 0.143
32	1.1/4	38 42.4	38	38	0.058 0.065	0.069 0.110	0.126 0.141	0.126 0.141	0.173 0.193	0.173 0.193
40	1.1/2	45 48.3	38	38	0.071 0.076	0.118 0.127	0.158 0.169	0.158 0.169	0.218 0.234	0.218 0.234
50	2	57 60.3	38	44	0.094 0.099	0.156 0.165	0.221 0.234	0.221 0.234	0.313 0.331	0.313 0.331
65	2.1/2	76 73.0	38	51	0.167 0.161	0.241 0.232	0.409 0.393	0.409 0.393	0.555 0.534	0.555 0.534
80	3	89	51	64	0.254	0.367	0.660	0.660	0.917	0.917
90	3.1/2	101.6	64	76	0.355	0.512	0.965	0.965	1.36	1.36
100	4	108 114.3	64	76	0.387 0.410	0.561 0.594	1.11 1.17	1.11 1.17	1.58 1.67	1.58 1.67
125	5	133 139.7 141.3	76	89	0.769 0.808 0.817	0.945 0.969 1.00	1.82 1.91 1.93	1.82 1.91 1.93	2.65 2.78 2.81	2.65 2.78 2.81
150	6	159 168.3 165.2	89	102	1.07 1.13 1.11	1.31 1.39 1.36	2.74 2.90 2.85	2.74 2.90 2.85	4.22 4.47 4.39	4.22 4.47 4.39
200	8	219 216.1	102	127	1.76 1.74	2.38 2.35	5.19 5.13	5.19 5.13	8.05 7.95	8.05 7.95
250	10	273 267.4	127	152	3.36 3.29	4.14 4.05	9.15 8.96	9.15 8.96	12.5 12.2	16.3 16.4

(续)Continued)

www.inoxcngroup.com

续上页 Continued from previous page

公称直径 Nominal diameter		外径 Outside diameter	背至末端距离 Back to end		(E型) 理论重量kg/pc (E) Approx weight					
DN	NPS	OD	E	E1	sch5S	sch10S	sch40S/ STD	sch40	sch80S/ XS	sch80
300	12	325 323.9 318.5	152	187	5.12 5.11 5.02	6.40 6.39 6.27	13.5 13.3 13.2	14.6 14.4 14.2	17.9 17.7 17.3	28.3 27.1 26.8
350	14	377 355.6	165	191	6.00 5.66	8.46 7.87	16.9 15.9	19.9 18.8	22.5 21.2	38.5 35.2
400	16	426 406.4	178	203	6.93 6.60	7.91 7.53	21.0 20.0	28.2 26.7	28.0 26.7	52.0 49.1
450	18	478 457.2	203	229	7.90 7.52	9.01 8.58	26.9 25.6	43.8 41.4	35.8 34.1	76.1 69.1
500	20	529 506.0	229	254	10.5 10.1	12.02 11.7	33.2 31.8	57.6 54.0	44.2 42.5	103 93.7
550	22	559	254	254	12.1	22.6	38.8	78.3	51.7	116
600	24	630 610	267	305	14.8 14.3	16.9 16.4	46.5 45.1	92.3 90.1	61.9 60.1	177 160
650	26	660	267	-	23.3	26.1	50.5	103.5	67.3	-
700	28	720 711	267	-	27.1 26.7	32.4 29.7	56.9 56.2	151.1 121.3	75.6 74.9	-
750	30	762	267	-	41.4	51.7	62.1	117.3	82.8	-
800	32	820 813	267	-	43.4 43.1	58.3 57.7	70.6 70.0	127 126	92.0 91.2	-
850	34	864	267	-	57.2	68.5	78.7	144	105	-
900	36	920 914	267	-	60.3 59.1	74.6 72.1	86.6 85.7	172 171	115 114	-

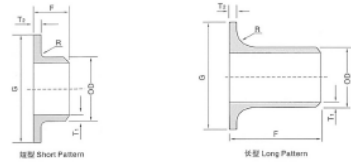
www.inoxcngroup.com

管帽CAPS

上述尺寸符合 GB/T 12459, GB/T 13401, SH 3408, SH 3409, EN 10253-4, ASME B16.9, MSS SP-43, DIN 2605, JIS B2313标准。
Above dimensions acc. to GB/T 12459, GB/T 13401, SH 3408, SH 3409, EN10253-4, ASME B16.9, MSS SP-43, DIN 2605, JIS B2313.

理论重量按ANSI B16.19标准壁厚计算
Weights are approximate and based on manufacturer's data, according to ANSI B16.19

We can provide:
Stainless steel (201, 304, 304L, 316, 316L, 317, 317L, 321, 321H, 321H1, 316S, 317L, 904L, 625H/625H1)
Double steel (S31603/S316030303, S30703/S307030303)
Special Alloy (Inconel 600, Inconel 625, Inconel 690, Hastelloy C276, Hastelloy C22)
Our specialized products:
stainless steel pipe fittings, stainless steel flanges and stainless steel tubes

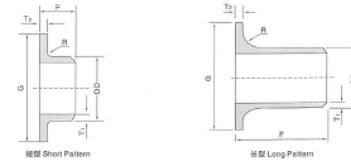


翻边短接 Stub End

上述尺寸符合MSS SP-43, ASME B16.9标准。
Above dimensions acc.to MSS SP-43, ASME B16.9.

公称直径 Nominal diameter	外径 Outside diameter	长度 Length	搭接外径 Diameter of lap Nominal & Maximum		圆角半径 Radius of Fillet		(E) 理论重量kg/m E Approx weight								
			短型 SP	长型 LP	A Max	B Max	sch5S		sch10S		sch40S				
DN	NPS	OD	短型 SP	长型 LP	G	A Max	B Max	短型 SP	长型 LP	短型 SP	长型 LP	短型 SP	长型 LP	短型 SP	长型 LP
15	1/2	21.3	50.8	76.2	35.1	3	0.75	0.049	0.067	0.062	0.084	0.079	0.106		
20	3/4	26.7	50.8	76.2	42.9	3	0.75	0.064	0.087	0.061	0.109	0.101	0.144		
25	1	33.4	50.8	101.6	50.8	3	0.75	0.082	0.144	0.134	0.233	0.160	0.279		
32	1.1/4	42.4	50.8	101.6	63.5	5	0.75	0.109	0.188	0.178	0.307	0.225	0.386		
40	1.1/2	48.3	50.8	101.6	73.2	6	0.75	0.129	0.219	0.213	0.358	0.279	0.467		
50	2	60.3	63.5	152.4	91.9	8	0.75	0.204	0.406	0.338	0.667	0.471	0.924		
65	2.1/2	73.0	63.5	152.4	104.6	8	0.75	0.313	0.626	0.448	0.893	0.740	1.465		
80	3	88.9	63.5	152.4	127.0	10	0.75	0.400	0.781	0.574	1.117	1.01	1.954		
90	3.1/2	101.6	76.2	152.4	139.7	10	0.75	0.522	0.896	0.650	1.283	1.38	2.35		
100	4	114.3	76.2	152.4	157.2	11	0.75	0.606	1.024	0.870	1.474	1.68	2.822		
125	5	141.3	76.2	203.2	185.7	11	1.5	0.985	2.153	1.21	2.635	2.08	4.957		
150	6	168.3	88.9	203.0	215.9	13	1.5	1.34	2.591	1.64	3.174	3.37	6.482		
200	8	219.1	101.6	203.2	269.7	13	1.5	1.96	3.409	2.65	4.607	5.67	9.819		
250	10	273.1	127	254.0	323.9	13	1.5	3.57	6.389	4.38	7.843	9.55	17.023		
300	12	323.9	152.4	254.0	381.0	13	1.5	5.85	8.922	6.74	10.275	13.8	21.075		
350	14	355.6	152.4	304.8	412.8	13	1.5	6.55	11.571	7.49	13.912	16.88	-		
400	16	406.4	152.4	304.8	469.9	13	1.5	7.778	14.216	8.797	16.078	-	-		
450	18	457.2	152.4	304.8	533.4	13	1.5	9.009	16.216	10.252	18.453	-	-		
500	20	508	152.4	304.8	584.2	13	1.5	11.102	19.984	13.202	23.764	-	-		
550	22	559	152.4	304.8	641.4	13	1.5	12.763	22.81	14.779	26.413	-	-		
600	24	610	152.4	304.8	692.2	13	1.5	16.132	28.839	18.476	33.028	-	-		

www.inoxcngroup.com



公称直径 Nominal pipe size DN	端部外径 Outside Diameter at Bevel D		长度 End to End L	圆角半径 Radius of fillet R	搭接直径 Diameter of lap G
	A系列 Series A	B系列 Series B			
15	21.3	18	38	2	46
20	26.9	25	40	2	56
25	33.7	32	40	3	65
32	42.4	38	42	3	76
40	48.3	45	45	3	84
50	60.3	57	48	3	99
65	76.1	76	48	3	118
80	88.9	89	50	4	132
100	114.3	108	52	4	156
125	139.7	133	55	4	184
150	168.3	159	55	4	211
200	219.1	219	62	5	266
250	273	273	70	5	319
300	323.9	325	78	5	370
350	365.6	377	82	5	429
400	406.4	426	85	5	480
450	457	478	87	5	548
500	508	529	90	6	609
600	610	630	95	6	720

www.inoxcngroup.com

翻边短接 Stub End

本表尺寸适用(S/E)对焊环松套制管法兰
(HG20559-97)PN1.6Mpa。
客户要求不同压力及型号,请在合同上注明。
Table size of the application (SE),
Central-ring sets of welded steel pipe flanges
(HG20559-97) PN1.6Mpa.
Customer requirements are different pressures
and models, please indicate on the contract.

We can provide:
Stainless steel (201, 304, 304L, 316, 316L, 317, 317L,
321, 321H, 321PH, 316L, 317L, 904L, 80304/90402/4)
Duplex steel (S31803/S32203/S30903/S30908/S31203)
Special Alloy (Inconel 600, Inconel 625, Inconel 718,
Titanium alloy, Hastelloy, etc.)
Our specialized products:
Stainless steel pipe flange, stainless steel flange and
stainless steel tubes

GB/T 12459
对焊管件形位公差表
Angularity tolerance of
butt-welding fittings

GB/T 12459 对焊管件形位公差表 Angularity tolerance of butt-welding fittings

项目	管件种类	公称通径范围				
		15-65	80-100	125-200	250-450	500
端面外径	所有管件	+1.6 -0.8	±1.6	+2.4 -1.6	+4.0 -3.2	+5.4 -4.8
端面内径		±0.8	±1.6	±3.2	±4.8	
壁厚		不小于公称壁厚的87.5%				
中心至端面尺寸H、F	45° 弯头、90° 弯头	±2		±3		
中心至中心尺寸P	180° 弯头	±7		±10		
背面至端面尺寸K		±7				
长度L	异径接头	±2		±3		
中心至端面尺寸C、M	三通	±2		±3		
背面至端面尺寸E、E1	管帽	±4		±7		

项目	管件种类	公称通径范围				
		15-65	80-100	125-200	250-450	500
X	弯头、三通、异径管、四通	1	2	3	4	
Y	弯头、三通、四通	2	4	5	7	10
U	180° 弯头	1		2		

注：1)除非用户有特殊要求，应优先保证端面外径和公称壁厚的极限偏差

GB/T 13401 对焊管件形位公差表 Angularity tolerance of butt-welding fittings

项目	管件种类	公称通径范围				
		150-200	250-450	500-600	650-750	800-1200
端面外径	所有管件	+2.4 -1.6	+4.0 -3.2	+5.4 -4.8		
端面内径		±1.6	±3.2	±4.8		
壁厚		不小于公称壁厚的87.5%				
中心至端面尺寸H、F	45° 弯头、90° 弯头	-		±3	±5	
长度L	异径接头	-		±3	±5	
中心至端面尺寸C、M	三通四通	-		±3	±5	
背面至端面尺寸E		-		±7	±10	
端面最大外径差	所有管件	不大于0.01DN，且不大于5				

项目	管件种类	公称通径范围				
		350-400	400-600	650-750	800-1050	1100-1200
端面外径X	弯头、三通异径接头、三通	3	4	5		
中心外径Y	弯头、三通、四通	7	10	13	19	

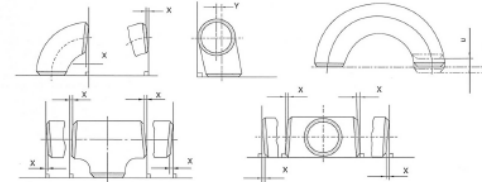
注：1)除非用户有特殊要求，应优先保证端面外径和公称壁厚的极限偏差
2)对于异径管件，其尺寸偏差是按大径端的公称通径分档定的

对焊管件形位公差表
Angularity tolerance of
butt-welding fittings
ASME/ANSI
B 16.9、B 16.28

对焊管件形位公差表 ASME/ANSI B 16.9、B 16.28
Angularity tolerance of butt-welding fittings ASME/ANSI B 16.9、B 16.28

项目	管件种类	公称通径DN(m.)							
		1/2-2 1/2	3-3 1/2	4	5-8	10-18	20-24	26-30	32-48
端面外径 D、D1、D2	所有管件	+1.52 -0.76	±1.52	+2.29 -1.52	+4.06 -3.05	+6.35 -4.83			
端面内径 d ₁ 、d ₂		±0.76	±1.52	±3.05			±4.83		
壁厚 T、T1、T2		不小于公称壁厚的87.5%							
中心至端面 H、F、C、M	45° 90° 弯头 三通/四通	±1.52		±2.29		±3.05		±4.83	
中心至中心 P		±6.35		±9.65		-			
背面至端面 K	180° 弯头	±6.35		±1.52		-			
U		±0.76		±1.52		-			
长度 L	异径管、翻边短接	±1.52		±2.29		±4.83			
全长 E、E1	管帽	±3.05		±6.35		±9.65			
搭接直径 G	翻边短接	0 -0.76		0		-			
搭接厚度		+1.52 0		0		-			
圆角半径 R		0 -0.76		0		-			

注：1)除非用户有特殊要求，应优先保证端面外径和公称壁厚的极限偏差
2)端面内径为端面外径两倍的公称壁厚的差
3)圆角为外径正、负偏差绝对值之和



奥氏体不锈钢化学成分对照表
Chemical composition table of stainless steel

奥氏体不锈钢化学成分对照表 Chemical composition table of stainless steel

国别	标准	GB牌号	化学成分(%) Chemical composition (%)							机械性能 Mechanical properties						
			C≤	Mn≤	Si≤	P≤	Cr	Ni	Mo	其它	σ _b (Mpa)	ε (%)	HBW			
中国 China	GB/T13481	SF304	0.08	2.00	1.00	0.03	0.045	17.50-20.00	8.00-11.00			515	205	201		
		SF304L	0.03	2.00	1.00	0.03	0.045	17.50-20.00	8.00-13.00			480	170	30 201		
		SF321	0.08	2.00	1.00	0.03	0.045	17.00-19.00	9.00-12.00		Ti5C-0.70	515	205	30 201		
		SF316	0.08	2.00	1.00	0.03	0.045	16.00-18.00	10.00-14.00	2.00-3.00		515	205	30 201		
		SF316L	0.03	2.00	1.00	0.03	0.045	16.00-18.00	10.00-15.00	2.00-3.00		480	170	30 201		
		SF310	0.10	2.00	1.50	0.03	0.045	24.00-26.00	19.00-22.00			515	205	30 201		
美国 America	ASTM A403	SF347	0.08	2.00	1.00	0.03	0.045	17.00-20.00	9.00-13.00		Nb:10C-1.10	515	205	30 201		
		S30400	0.08	2.00	1.00	0.03	0.045	18.00-20.00	8.00-11.00			515	205	2B		
		S30403	0.08	2.00	1.00	0.03	0.045	18.00-20.00	8.00-12.00			485	170	2B		
		S32100	0.08	2.00	1.00	0.03	0.045	17.00-19.00	9.00-12.00		Ti5C-0.70	515	205	2B		
		S31600	0.08	2.00	1.00	0.03	0.045	16.00-18.00	10.00-14.00	2.0-3.0		515	205	2B		
		S31603	0.08	2.00	1.00	0.03	0.045	16.00-18.00	10.00-14.00	2.0-3.0		485	170	2B		
		S31700	0.08	2.00	1.00	0.03	0.045	18.00-20.00	11.00-15.00	3.0-4.0		515	205	2B		
		S31703	0.08	2.00	1.00	0.03	0.045	18.00-20.00	11.00-15.00	3.0-4.0		515	205	2B		
		S310S	0.08	2.00	1.00	0.03	0.045	24.00-26.00	19.00-22.00			515	205	2B		
		S34700	0.08	2.00	1.00	0.03	0.045	17.00-19.00	9.00-12.00		Nb:10C-1.10	515	205	2B		
		欧洲 Euro	EN10253-4	1.4301	0.07	2.00	1.00	0.015	0.045	17.00-19.50	8.00-10.50			500-700	195	40
				1.4307	0.03	2.00	1.00	0.015	0.045	17.50-19.50	8.00-10.00			470-470	180	40
				1.4541	0.08	2.00	1.00	0.015	0.045	17.00-19.50	10.00-12.00		Ti:5XC-0.70	500-730	200	35
				1.4401	0.07	2.00	1.00	0.015	0.045	16.50-18.50	10.00-13.00	2.00-2.5		510-710	205	40
				1.4404	0.03	2.00	1.00	0.015	0.045	16.50-18.50	10.00-13.00	2.00-2.5		490-690	190	40
				1.4571	0.08	2.00	1.00	0.015	0.045	16.50-18.50	10.50-13.50	2.00-2.5	Ti:5XC-0.70	500-730	210	35
		日本 Japan	JIS 3450/3448	1.4550	0.08	2.00	1.00	0.015	0.045	17.00-19.00	9.00-12.00		Nb:10C-1.00	510-740	205	35
				SUS304	0.08	2.00	1.00	0.03	0.045	18.00-20.00	8.00-10.50			520	205	35
SUS304L	0.03			2.00	1.00	0.03	0.045	18.00-20.00	9.00-13.00			460	175	35		
SUS321	0.08			2.00	1.00	0.03	0.045	17.00-19.00	9.00-13.00		Ti:5XC以上	520	205	35		
SUS316	0.08			2.00	1.00	0.03	0.045	16.00-18.00	10.00-14.00	2.00-3.00		520	205	35		
SUS316L	0.03			2.00	1.00	0.03	0.045	16.00-18.00	12.00-15.00	2.00-3.00		490	175	35		
SUS317	0.08			2.00	1.00	0.03	0.045	18.00-20.00	11.00-15.00	3.00-4.00		520	205	35		
SUS317L	0.03			2.00	1.00	0.03	0.045	18.00-20.00	11.00-15.00	3.00-4.00		480	175	35		
SUS310S	0.08			2.00	1.00	0.03	0.045	24.00-26.00	19.00-22.00			520	205	35		
SUS347	0.08			2.00	1.00	0.03	0.045	17.00-19.00	9.00-13.00		Nb:10C以上	520	205	35		

中外不锈钢牌号对照表
Comparison table between domestic and foreign stainless steel grades

序号	类别	中国GB	美国 AISI, ASTM	日本JIS	欧洲EN
1	奥氏体不锈钢	06Cr19Ni10	304, S30400	SUS304	X5CrNi18-10 1.4301
2		022Cr19Ni10, S30403	304L, S30403	SUS304L	X2CrNi18-11 1.4307
3		07Cr19Ni11Ti, S32160	321H, S32109	SUS321H	X7CrNi18-10 1.4541
4		06Cr18Ni11Ti, S32168	321, S32100	SUS321	X6CrNi18-10 1.4541
5		06Cr17Ni12Mo2, S31608	316, S31600	SUS316	X5CrNiMo17-12-2 1.4401
6		022Cr17Ni12Mo2, S31603	316L, S31603	SUS316L	X2CrNiMo17-12-2 1.4404
7		06Cr17Ni12Mo3Ti, S31668	316Ti, S31635	SUS316Ti	X6CrNiMoTi17-12-2 1.4571
8		06Cr19Ni13Mo3, S31708	317, S31700	SUS317	— —
9		022Cr19Ni13Mo3, S31703	317L, S31703	SUS317L	X2CrNiMo19-14-4 1.4438
10		06Cr25Ni20, S31008	310S, S31008	SUS310S	X12CrNi23-12 1.4845
11		06Cr18Ni11Nb, S34778	347, S34700	SUS347	X5CrNiNb18-10 1.4550
12		022Cr22Ni5Mo3N, S22253	S31803	SUS329J3L	X2CrNiMoN22-5-3 1.4462
13		022Cr18Ni6Mo3Si2N, S21953	S31500	—	— —
14		030Cr25Ni6Mo3Cu2N, S25554	S32550, 255	SUS329J4L	X2CrMoCuNi25-6-3 1.4507
15		022Cr25Ni6Mo2N, S22553	S31200	—	X3CrMoNi27-5-2 1.4460
16		022Cr25Ni7Mo4N, S25073	S32750, 2507	—	X2CrNiMoN25-7-4 1.4410
17		022Cr23Ni5Mo3N	S32205, 2205	—	— —

中外不锈钢牌号对照表
Comparison table between domestic and foreign stainless steel grades

